


## Windows 7 Student Wireless Network Authentication

1. Click on the wireless radio by the System Clock
2. Click **CSUF-Wireless** Wireless Network
3. Click **Connect**



4. Open **Internet Explorer**  (Wireless Page Will Automatically Open)
5. Click on the **Laptop** Icon



6. Click on **Students**



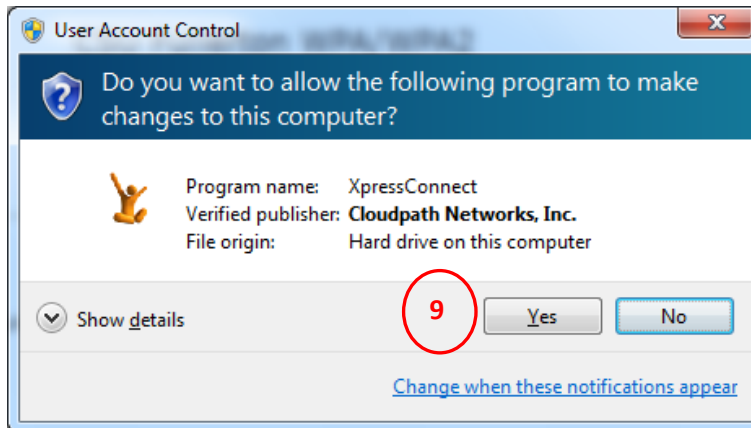
7. Check the check box for "I accept terms..."
8. Click **Start**

XpressConnect will attempt to load automatically using a Java Applet or ActiveX. If you prefer, you may [load XpressConnect manually](#).

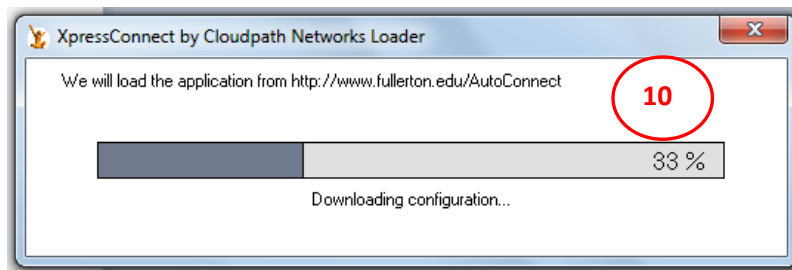
started, simply accept the End-User License Agreement and click 'Start'.



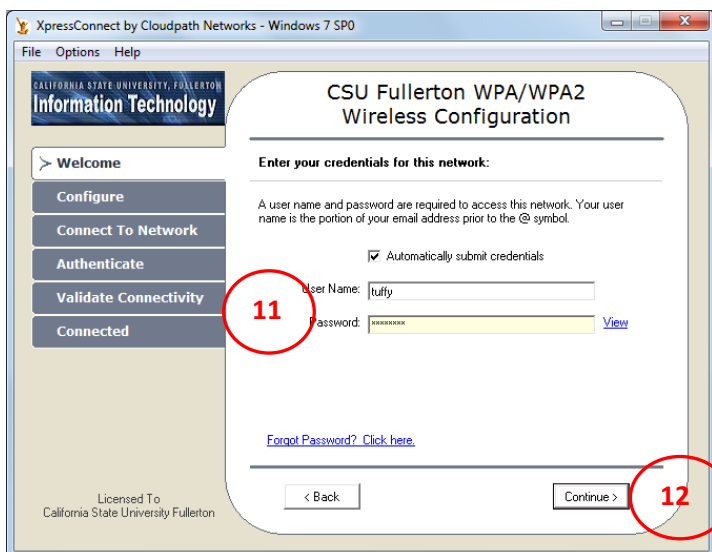
9. Click **Yes** to allow the installer to run



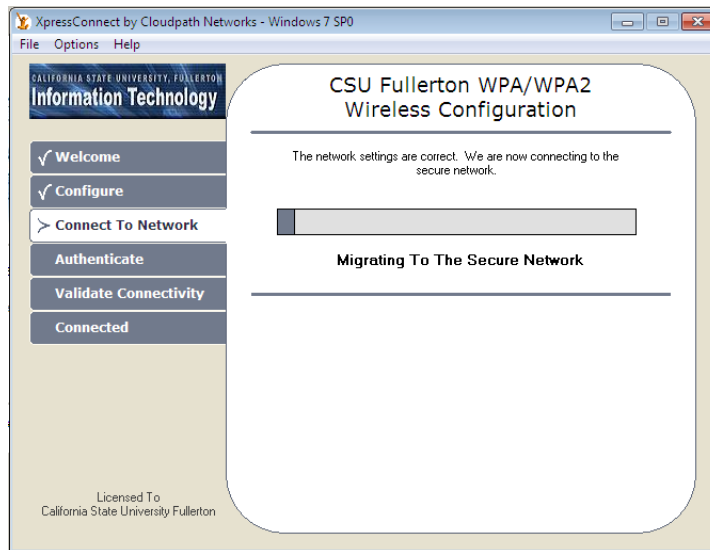
10. Wait a few minutes for the program to load



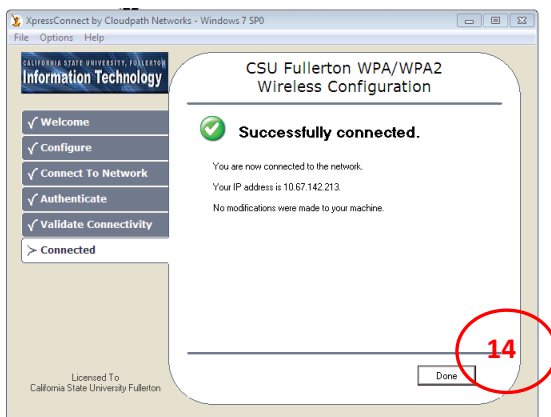
11. Enter Your **Username** and **Password** (Portal Login Information)
12. Click **Continue**



13. Follow the Instructions on the screen



14. Click Done



15. **Finished.** You are now authenticated to the **Student's Wireless network.**