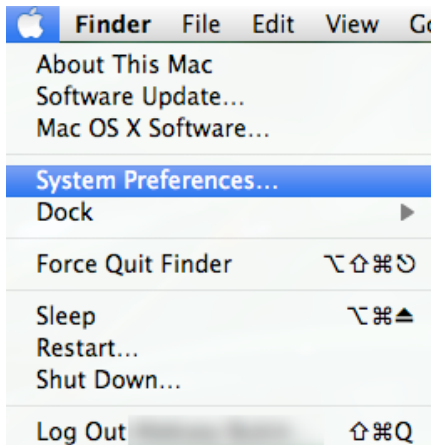


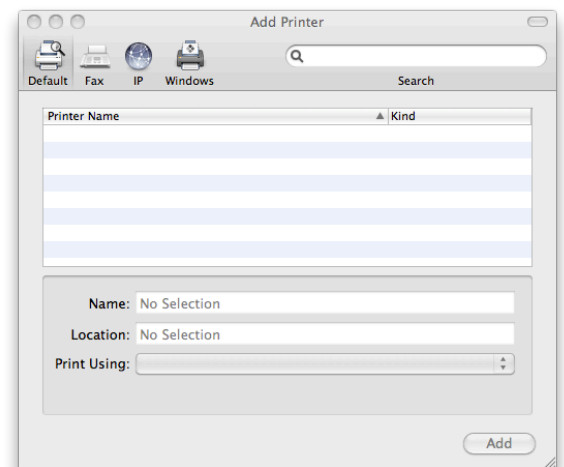
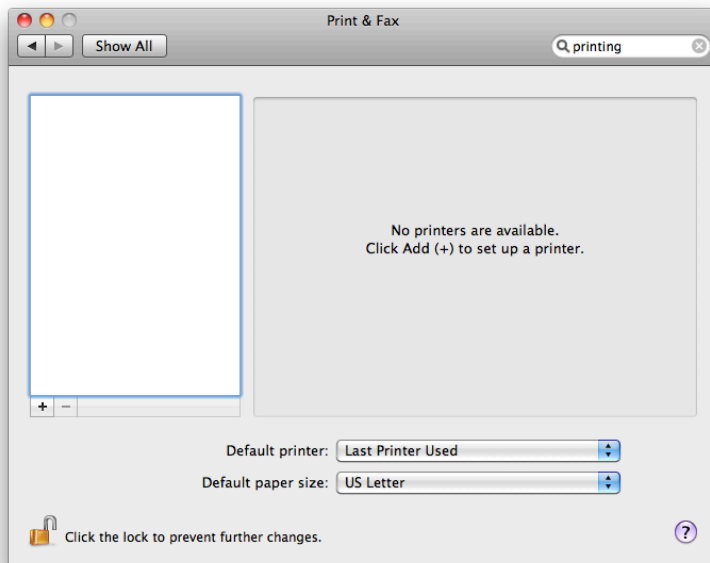
Wireless Printing Setup for Mac OS X*

*Please note: these instructions will work on OS X 10.5 (Leopard) and OS X 10.6 (Snow Leopard). For help configuring previous OS X versions, please see the Student Genius Corner

1. **Before you begin:** Make sure you are properly connected to the “Students-Secure” wireless network. For help with wireless connectivity, please see the Help Desk.
2. From the main Apple menu, select System Preferences. Navigate to Print & Fax

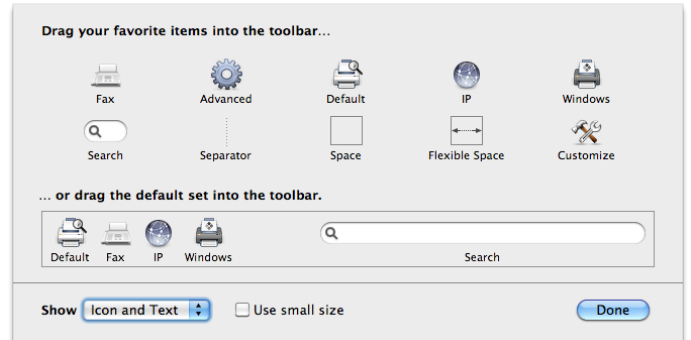
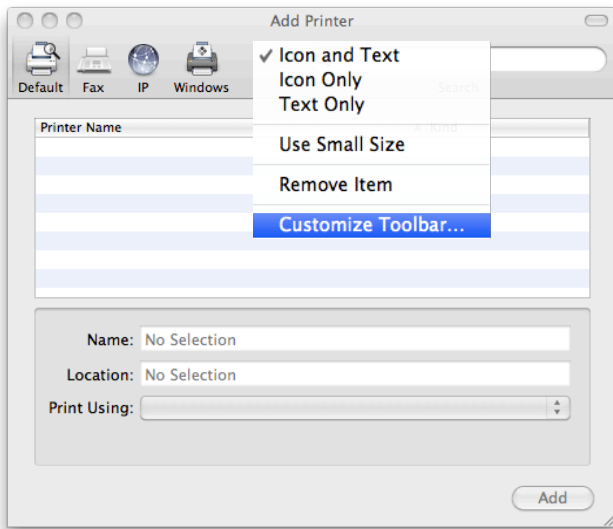


3. Click the plus (+) to add a printer

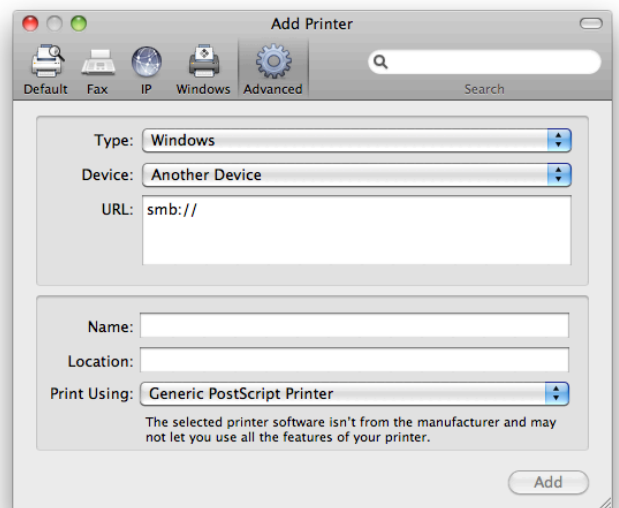


4. The Add Printer window will appear

5. Right-click (or hold Control+left click) the toolbar. Click “Customize Toolbar”
6. From the window that rolls out, drag the Advanced button to the toolbar.
7. Press Done



8. Your toolbar should look like this:
9. Click the Advanced button you’ve just added
10. In the Advanced window, select the following:
 - **Type:** Windows
 - **Device:** Another Device
 - **Print Using:** Generic PostScript Printer



11. The parameters for the **Name** and **URL** fields are listed below. The Location field can be kept blank. Click Add once you fill these fields in.

| Name | Location | smb:// address |
|-------------|---------------------------|-----------------------------------|
| ER2 | Library North - 1st floor | smb://10.68.142.137/ERBLACKWHITE2 |
| MHTL-1 | MH-47 - Basement | smb://10.68.179.221/MHTL-1 |
| PrintOnly 1 | Library North - 1st floor | smb://10.68.140.131/printview |
| Laser2 | Titan Lab | smb://10.68.179.201/Laser2 |

*the complete listing of all library printers is located on the last page.

12. The printer will ask for your credentials.
- Name: ACAD\CSUF Portal username
 - Password: CSUF Portal password
 - Check the “Remember this password...” box to save the password on your Mac



13. The print job will show up as “Remote Downlevel Document” on the print station. Look for your username to print your document.
14. You’re done! The complete list of all lab printers can be found on the following page.

Complete Listing of Available Printers

| Location | Name | smb:// address |
|-----------------------------------|------------|-------------------------------------|
| Library North - 1st floor | PrintOnly1 | smb://10.68.140.131/printview |
| Library North - 2nd floor | PrintOnly2 | smb://10.68.140.133/printview2 |
| Library North - 3rd floor | PrintOnly3 | smb://10.68.142.130/printview |
| Library North - 4th floor | PrintOnly4 | smb://10.68.140.132/printview |
| TitanLab (Library North Basement) | Laser1 | smb://10.68.179.199/Laser1 |
| TitanLab (Library North Basement) | Laser2 | smb://10.68.179.201/Laser2 |
| TitanLab (Library North Basement) | Laser3 | smb://10.68.179.205/Laser3 |
| TitanLab (Library North Basement) | Color1 | smb://10.68.179.210/Color1 |
| TitanLab (Library North Basement) | Color2 | smb://10.68.179.192/Color2 |
| ILC (Library North - 1st floor) | ER1 | smb://10.68.142.136/ERBLACKWHITE1 |
| ILC (Library North - 1st floor) | ER2 | smb://10.68.142.137/ERBLACKWHITE2 |
| ILC (Library North - 1st floor) | COLOR1 | smb://10.68.142.139/oncolor |
| ILC (Library North - 1st floor) | ON1 | smb://10.68.142.138/ONBLACKWHITE1 |
| ILC (Library North - 1st floor) | ON2 | smb://10.68.141.110/onblackwhite2 |
| PLN2 (Library South - 2nd floor) | PLN2-1 | smb://10.68.140.128/pln2blackwhite1 |
| PLN2 (Library South - 2nd floor) | PLN2-2 | smb://10.68.141.111/pln2blackwhite2 |
| Library South - 1st floor | OS1 | smb://10.68.141.134/osblackwhite1 |
| Library South - 1st floor | OS2 | smb://10.68.141.112/osblackwhite2 |
| McCarthy Hall MH-47 | MHTL-1 | smb://10.68.179.221/MHTL-1 |
| McCarthy Hall MH-47 | MHTL-2 | smb://10.68.179.222/MHTL-2 |
| McCarthy Hall MH-47 | MHTL-Color | smb://10.68.179.223/MHTL-COLOR |