



# Common Financial System

Going from CMS (Common Management System)  
to CFS (Common Financial System)



# Campus Timelines

Copy of CSUF ERP Projects\_022210.xlsx

| Fullerton CMS Projects            |     |     |     |  |     |      |  |     |                                  |         |   |     |     |         |     |         |     |      |     |   |  |     |     |     |     |         |     |     |     |     |  |         |         |  |  |
|-----------------------------------|-----|-----|-----|--|-----|------|--|-----|----------------------------------|---------|---|-----|-----|---------|-----|---------|-----|------|-----|---|--|-----|-----|-----|-----|---------|-----|-----|-----|-----|--|---------|---------|--|--|
| 2009                              |     |     |     |  |     | 2010 |  |     |                                  |         |   |     |     |         |     |         |     | 2011 |     |   |  |     |     |     |     |         |     |     |     |     |  |         |         |  |  |
|                                   | JUL | AUG | SEP | OCT  | NOV | DEC  | JAN  | FEB | MAR                              | APR     | MAY   | JUN | JUL | AUG     | SEP | OCT     | NOV | DEC  | JAN | FEB   | MAR  | APR | MAY | JUN | JUL | AUG     | SEP | OCT | NOV | DEC |  |         |         |  |  |
| Finance Consolidation (CFS) PILOT |     |     |     | P I L O T Campus<br>Common Code Base & Consolidated Database |     |      |  |     |                                  |         |   |     |     |         |     | Go-Live |     |      |     |   |  |     |     |     |     |         |     |     |     |     |  |         |         |  |  |
| Fullerton Data Warehouse          |     |     |     | Sandbox Evaluation<br>OBIEE                                  |     |      | EPM  |     |                                  | Go-Live |   |     |     |         |     |         |     |      |     |   |  |     |     |     |     |         |     |     |     |     |  |         |         |  |  |
| Direct Loans Program              |     |     |     |  |     |      | Planning/Structure<br>(the Awarding Phase) |     | Build (The Origination<br>Phase) |         | Transition/Deploy (The<br>Reconciliation Phase) |     |     |         |     |         |     |      |     |   |  |     |     |     |     |         |     |     |     |     |  |         |         |  |  |
| Absence Management                |     |     |     |  |     |      |  |     |                                  |         |   |     |     |         |     |         |     |      |     | Proposed Fit-Gap, Conversion, Modifications |  |     |     |     |     |         |     |     |     |     |  |         | Go-Live |  |  |
| Benefits Administration           |     |     |     |  |     |      |  |     |                                  |         |   |     |     |         |     |         |     |      |     |   | Proposed Fit-Gap, Data Clean-Up, Modifications |     |     |     |     |         |     |     |     |     |  | Go-Live |         |  |  |
| DARS                              |     |     |     |  |     |      | DARWin to U-Direct Planning                |     |                                  |         |   |     |     |         |     |         |     |      |     |   |  |     |     |     |     |         |     |     |     |     |  |         |         |  |  |
| Resource 26                       |     |     |     |  |     |      | Implementation                             |     |                                  |         |   |     |     | Go-Live |     |         |     |      |     |   |  |     |     |     |     |         |     |     |     |     |  |         |         |  |  |
| FIDM 9.0 Upgrade                  |     |     |     |  |     |      |  |     |                                  |         |   |     |     |         |     |         |     |      |     |   | Phase 1  |     |     |     |     | Phase 2 |     |     |     |     |  |         |         |  |  |



Upcoming Key dates

- March 1, 2010 – recommendation on Absence Management and Benefits Administration
- March 16, 2010 – completion of FIS to CFS review by campus teams
- November 2010 - recommendation on decision on DARS to U-Achieve / U-Direct



# Introduction to CFS

- In order to **face tougher budget economic climate**, the CMS Steering Committee at the Chancellor's Office has launched CFS, Common Financial Systems
- The CFS database consolidation project will combine all 23 CSU campuses financial systems into a **single CSU system-wide finance system**
- CFS was **approved by CABO** and **mandated by the Chancellor's Office** that all campuses convert to CFS by July 2011



# Introduction to CFS - Continued

- CSUF Enterprise Resource Planning (ERP) Steering Committee has **approved moving forward with CFS in October 2009**
- CSU Fullerton, along with two other campuses have been **chosen to be a pilot** of this ground breaking endeavor. ***The environment was delivered to pilots in February 2010.***
- Between November 2009 and June 2010, CSU Fullerton has participated in the design, development, and migration to CFS with a **go live scheduled for July 2010**



# Benefits of CFS

Designed to be a **cost effective and efficient** ERP system to reduce:

- Overall operational, hardware, and software costs
  - Each CSU presently maintains **approximately 4 to 6 financial environments with 6 servers per environment** (*conservatively 24 servers per campus*)
- Upgrade and maintenance costs over the lifecycle of the Oracle PeopleSoft product
  - Each upgrade or maintenance pack must be installed and retrofitted to each baseline and application modification in each environment.



# CMS Compared to CFS

- Core business functionality will essentially remain the same, moving toward system uniformity
- The new system will look and feel the same as CMS
- Slight differences in CFS baseline modules
- Adopting standardized business practices and reporting
- **Eliminated all campus-based modification**





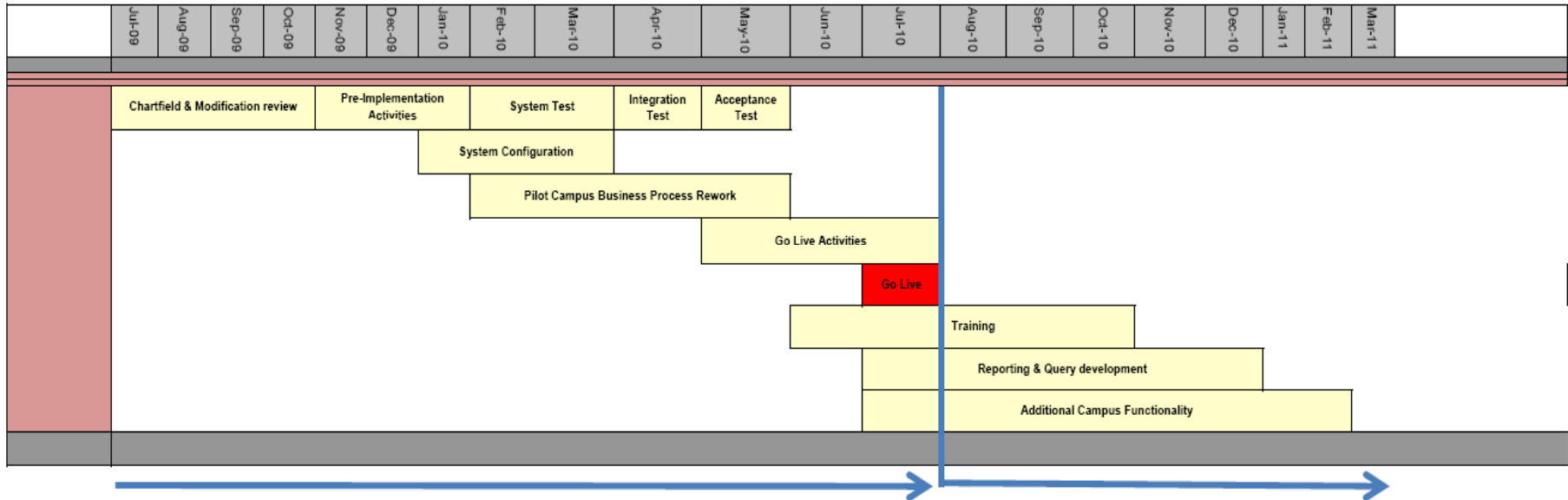
# Common Finance System High Level Project Timeline



## Common Finance System High Level Project Timeline

Last Update: 04/08/10

Pilot Campus Activities





## **Rapid Implementation Timeline**

- April 2009 to Sept 2009 – Central CFS design team analysis
- Sept 2009 to Jan 2010 – Central CFS Configuration and Development
- **February 2010 – Campus Demo environment delivered**
- March 2010 – No Modification decision
- March 2010 CSUF Campus fit gap





# Working with Groups

- Each functional change is moving through the following groups



- » Finance Central Office \ Functional Owners
- » Division Financial Managers
- » End Users

- \*\* *A significant difference from the first implementation is that baseline **will not** accommodate modifications.*
- \*\* *Significant work has gone into utilizing delivered functionality to match campus needs*



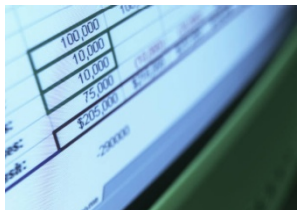
# Key Functionality Changes

- **Purchase Requisition**



- New process for adding requisitions
- New process for emailing
- New process for approvals

- **Budget Transfer**

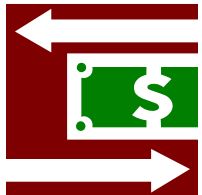


- New spreadsheet upload process



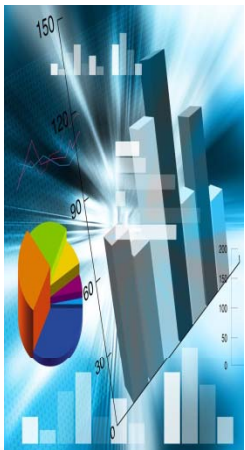
# Key Functionality Changes- Continued

- **Chargeback**



- New chargeback functionality will be implemented (transparent to department users)

- **Departmental Reporting and Queries**



- Newly delivered reporting and queries will utilize CFS data warehouse maintained by the Chancellor's Office
- Development is still a work-in-progress on certain data warehouse deliverables
- New enhanced queries will be deployed



# Continued Enhancements to CFS

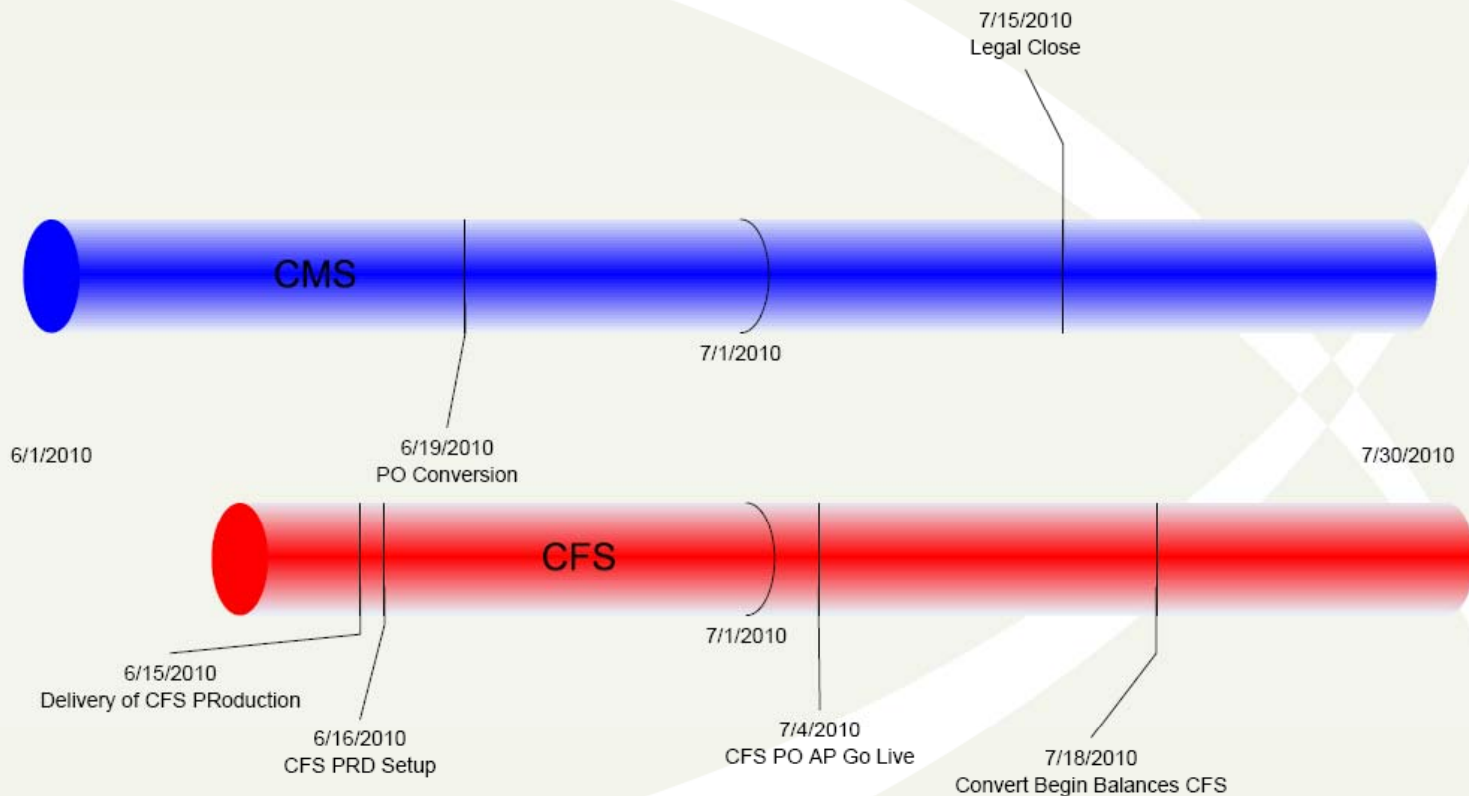
- Based on current feedback, we understand that **enhancements to CFS will need to be made**
- Campus activities towards enhancements:
  - CSUF now has a **CMS Executive Committee Member** in Academic Affairs VP Ephraim Smith
  - We are continuing discussions with SFSU, Northridge, San Jose on what a **“common” bolt on** might look like
  - Central looking at an **API for use in integrations** with other systems (.Net, FileNet, etc..)
  - There may be **existing baseline functionality** we can use as CFS develops



# What about financial system close?

## CFS Go Live Timeline

Friday, April 16, 2010







# For Additional Information

- **Updated CMS CFS Web Site**
  - <http://www.fullerton.edu/cms/cfs>

- **Email Messages and Road Shows**



#### Announcement

In order to face the tougher budgetary and economic climate the CMS steering committee at the Chancellor's Office has launched CFS, Common Financial System.

The CFS database consolidation project will combine all 23 CSU campuses Financial systems into a single CSU system wide Financial system and is designed to be a cost effective, efficient Enterprise Resource Planning (ERP) system that will reduce hardware, software and overall operational costs. CFS will also reduce upgrade and maintenance costs over the lifecycle of the Oracle PeopleSoft product.

Cal State Fullerton, along with two other campuses have been chosen to be pilots in this ground breaking endeavor. The scheduled go-live for CFS on our campus is July 2010. The Division of Information Technology and the Division of Administration and Finance have been working hard with campus finance managers and Chancellor's Office staff to build the Common Financial System. There will be presentations and meetings to provide overviews of CFS in May.

#### When?

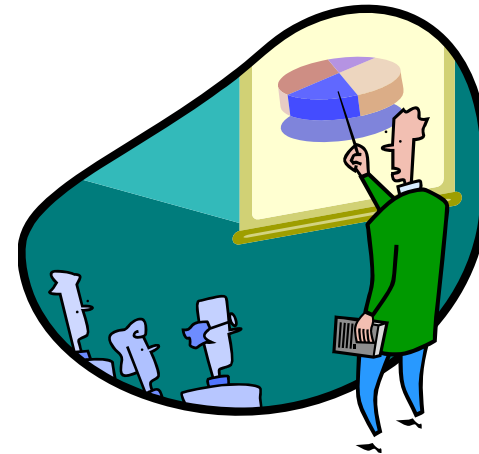
The scheduled go-live for CFS is July 2010.

#### What's required of me?

If you are interested in attending an overview presentation in May, please look for announcements about these opportunities coming soon.

#### Questions?

To learn more about CFS, please visit <http://www.fullerton.edu/cms/cfs/index.html> or go to the Chancellor's Office website at [http://cms.calstate.edu/06\\_Projects-Initiatives/06F\\_FISPROJ\\_CFS/CMS\\_06F\\_00\\_CFS\\_Home.asp](http://cms.calstate.edu/06_Projects-Initiatives/06F_FISPROJ_CFS/CMS_06F_00_CFS_Home.asp)



# IT@WORK





# Questions ?