

Pause, Plan, and Pivot:
Cultivating Service Learning Partnerships During the Pandemic

Welcome

In the chat, please prepare to introduce yourself by including:

- What your name is, position, title
- What brought you to this session

But... please refrain from submitting your response till we prompt you to do so! We will have everyone share at once through a WATERFALL of responses 😊

Welcome Introduction

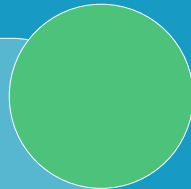
Session Sponsored by:

Rob Pierce

Center for Internships &
Community Engagement

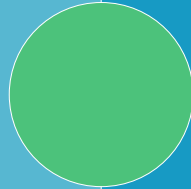
**Faculty Development
Center**

California State
University, Fullerton



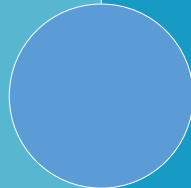
Jennifer A. Yee, Ph.D.

- Department of Asian American Studies
California State University, Fullerton



Ashley E. Cheri, Ed.D.

- Center for Educational Partnerships
University of California, Irvine



In the chat, please prepare to introduce yourself by including:

- What your name is, position, title
- What brought you to this session
- But... please refrain from submitting your response till we prompt you to do so! We will have everyone share at once through a WATERFALL of responses 😊

Pause, Plan, and Pivot: Cultivating Service Learning Partnerships During the Pandemic

Jennifer A. Yee, Ph.D. & Ashley E. Cheri, Ed.D.

Department of Asian American Studies, California State University, Fullerton
Center for Educational Partnerships, University of California, Irvine

Sponsored by

Rob Pierce

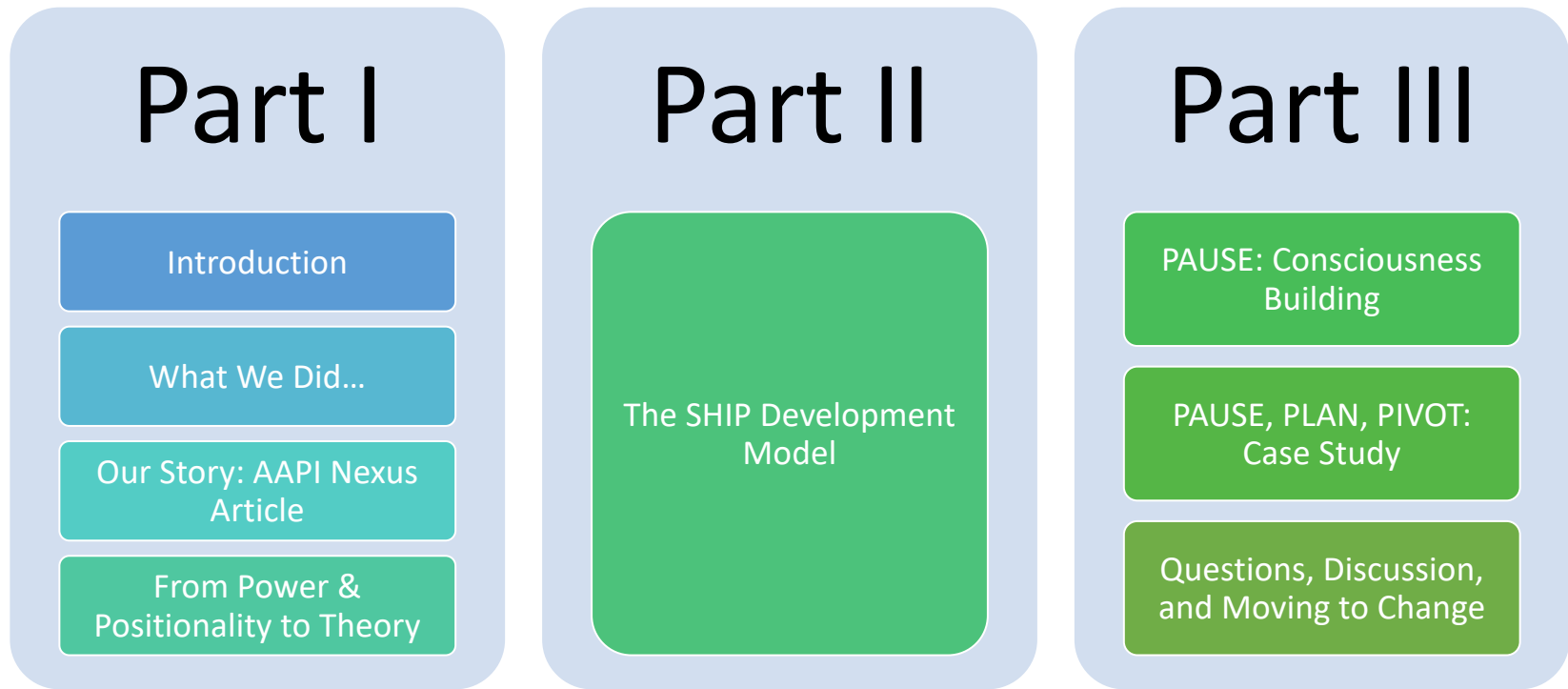
California State University, Fullerton
Center for Internships and Community Engagement

&

Faculty Development Center

Tuesday, April 12, 2022

Presentation Preview



Introduction

Jennifer A. Yee, Ph.D.

- Professor, Department of Asian American Studies at California State University, Fullerton
- 2017 Community Engaged Scholar award, Western Region of Campus Compact
- 30 years as faculty and administrator in higher education (student/academic affairs)
- Expertise in higher education & organizational change, service learning, community-engaged scholarship, and community organizing

Ashley E. Cheri, Ed.D.

- Director, Early Academic Outreach Programs (EAOP) at University of California, Irvine
 - Lecturer, Education 147 & Social Sciences 195 (Service Learning courses)
- Ed.D. California State University, Fullerton
 - 2019 Outstanding Student Scholarly and Creative Activities Award Recipients
- Former Community Partner: Orange County Asian & Pacific Islander Community Alliance (OCAPICA)

What We Did...

CSUF

- 2009-2016 – ASAM 230-Civic Engagement Through AAPI Studies Curriculum Development (pilot course, Special Course, Permanent Course, First SL course in GE – CSUF history)
- 2009-2017 – Intramural grants (curriculum development, faculty development, scholarship)
- 2011/2012 – External corporate grant – partner w/ Education
- 2012-17 – HAPI-YEP federal grant support – ASAM Prof. Tu-Uyen Nguyen
- 2018-present – Expand partners to Korean Resource Center, The Cambodian Family, Asian Americans Advancing Justice-Orange County

SCHOLARSHIP

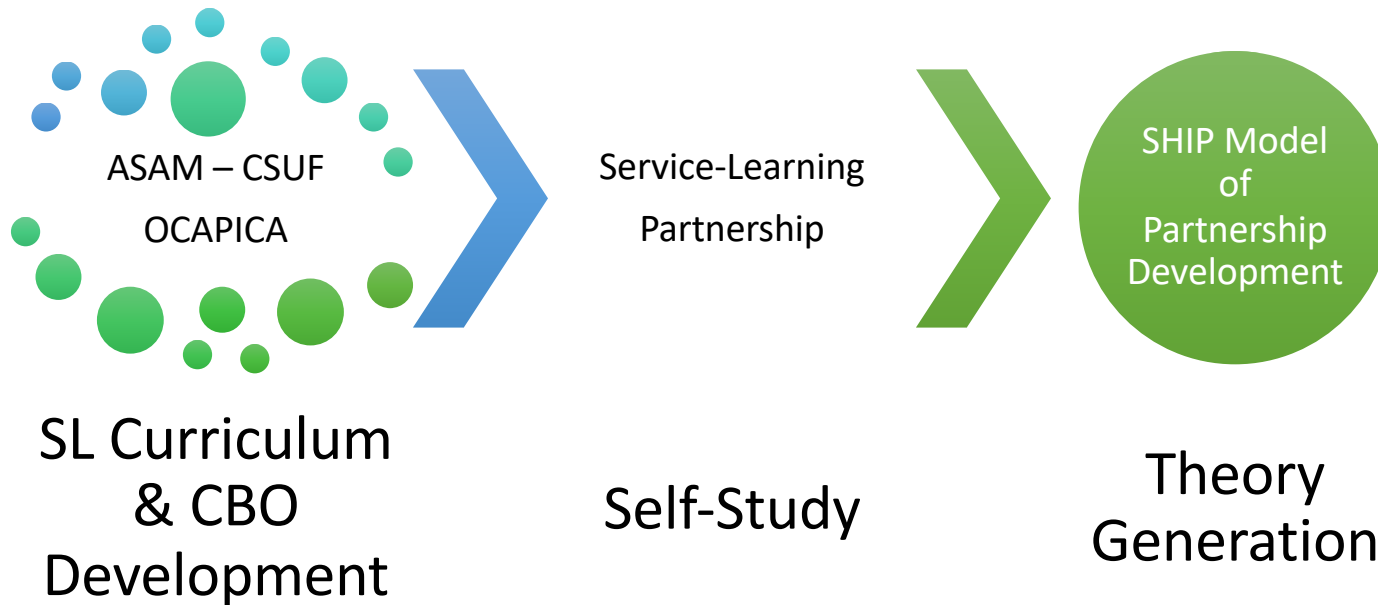
- 2015, Long Beach, CA: Continuums of Service,
- 2016, Garden Grove, CA: WASC Senior Colleges and Universities Consortium Academic Resource Conference
- 2017, Denver, Colorado: Continuums of Service
- 2018, Indianapolis, Indiana: National Campus Compact (Invited)
- 2019, San Diego, CA: Continuums of Service
- 2019, *AAPI Nexus: Policy, Practice and Community* Publication & Dissertation
- 2020, CSUF School of Humanities, Lecture Series

OCAPICA

- 2009/2010-Staff retreats
- 2010-2011 – Pilot course; assign staff to supervise/train service-learners
- 2011/2012-Grant w/ ASAM/CSUF and CAPOC; identified need for dedicated staff (Magnolia, Bolsa Grande)
- 2012-17 – HAPI-YEP federal grant; dedicated staff, focus on Magnolia; co-teach; field curriculum development
- 2018 – Allied Health, Workforce, Civic Engagement. Pause partnership.

Our Story:

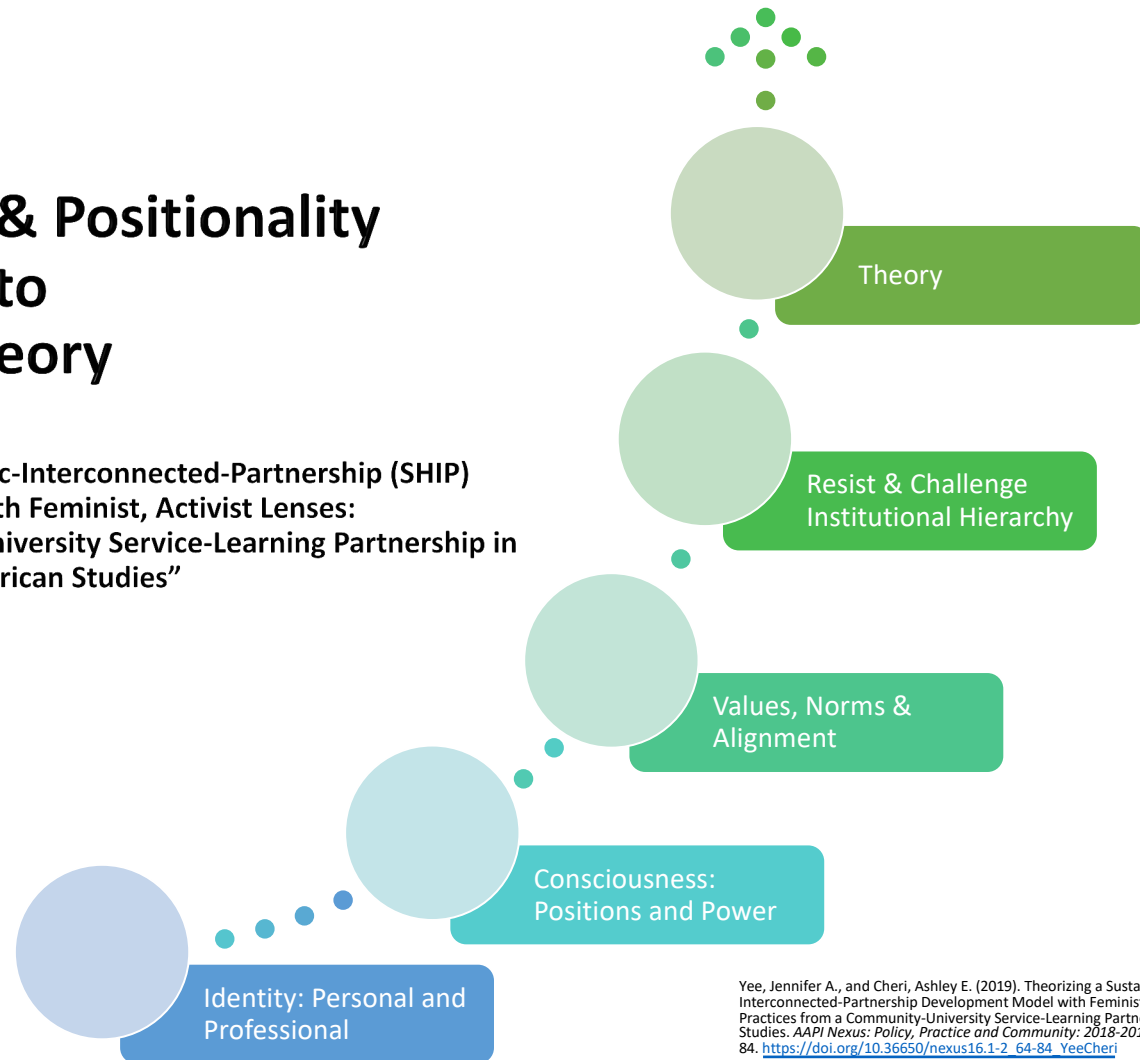
AAPI Nexus Article



- Yee, Jennifer A., and Cheri, Ashley E. (2019). Theorizing a Sustainable-Holistic-Interconnected-Partnership Development Model with Feminist, Activist Lenses: Best Practices from a Community-University Service-Learning Partnership in Asian American Studies. *AAPI Nexus: Policy, Practice and Community: 2018-2019*, Vol. 16, No. 1-2, pp. 64-84. https://doi.org/10.36650/nexus16.1-2_64-84 YeeCheri

From Power & Positionality to Theory

“Theorizing a Sustainable-Holistic-Interconnected-Partnership (SHIP)
Development Model with Feminist, Activist Lenses:
Best Practices from a Community-University Service-Learning Partnership in
Asian American Studies”



Yee, Jennifer A., and Cheri, Ashley E. (2019). Theorizing a Sustainable-Holistic-Interconnected-Partnership Development Model with Feminist, Activist Lenses: Best Practices from a Community-University Service-Learning Partnership in Asian American Studies. *AAPI Nexus: Policy, Practice and Community: 2018-2019*, Vol. 16, No. 1-2, pp. 64-84. https://doi.org/10.36650/nexus16.1-2_64-84_YeeCheri

The SHIP Development Model

- **Sustainable:** parallel, intersectional processes of action and relationship building > ongoing collaborative culture that deepens and strengthens over time
- **Holistic:** views visible and unseen aspects of partnership development as a system comprised of related parts
- **Interconnected:** relies on each participant’s strengths, honesty, care, and integrity to become reciprocal and mutually beneficial
- **Partnership:** evolves from working relationship to “partnership”



Yee, Jennifer A., and Cheri, Ashley E. (2019). Theorizing a Sustainable-Holistic-Interconnected-Partnership Development Model with Feminist, Activist Lenses: Best Practices from a Community-University Service-Learning Partnership in Asian American Studies. *AAPJ Nexus: Policy, Practice and Community*: 2018-2019, Vol. 16, No. 1-2, pp. 64-84. https://doi.org/10.36650/nexus16.1-2_64-84 YeeCheri



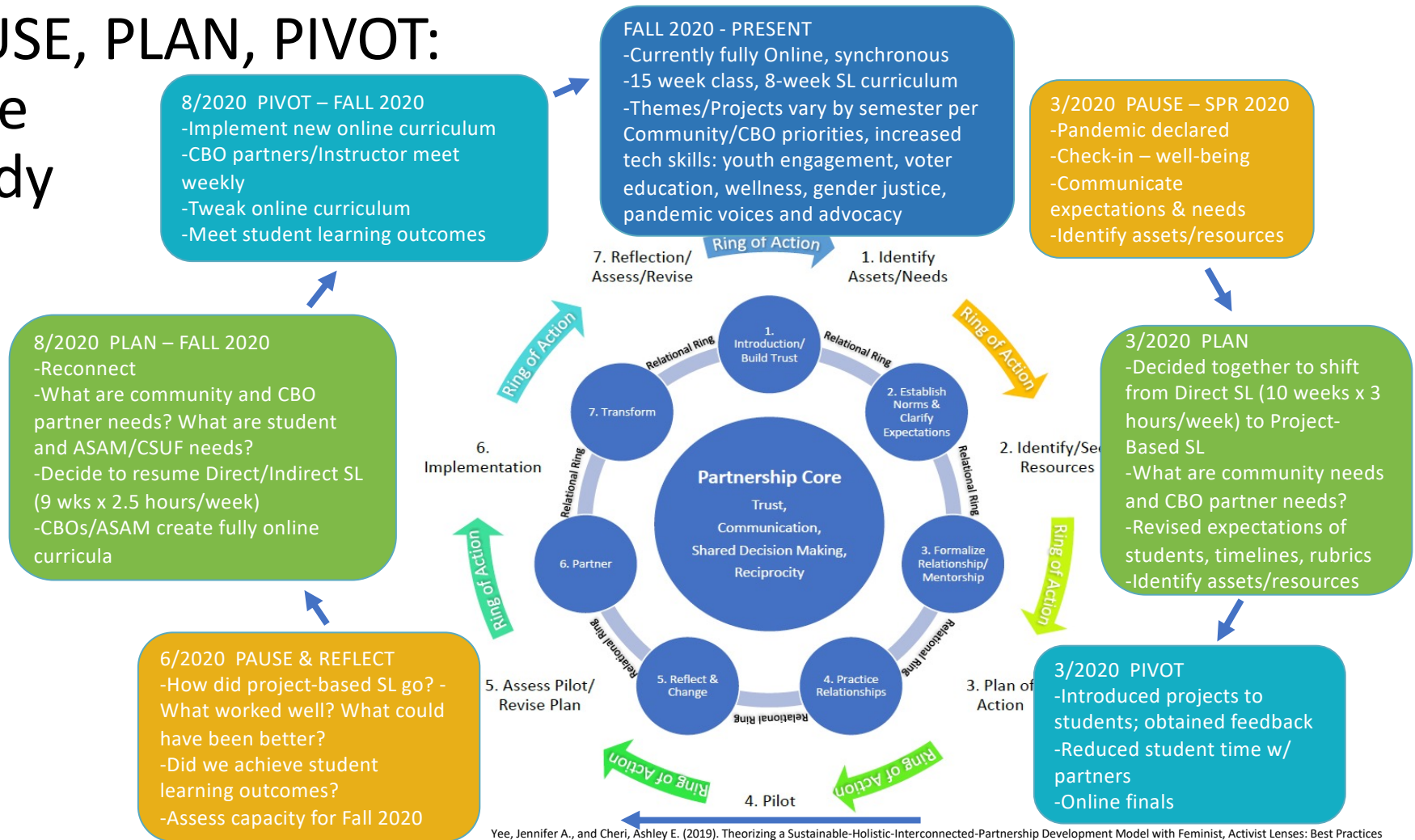
PAUSE: Consciousness Building

Relative to the SHIP Model and working with partner(s)...

- Where are you?
- What aspects of the model do you do?
- What aspects have you yet to do or you could do better?
- Do you see yourself in one ring or the other (ring of action vs. relational ring)?

Discussion

PAUSE, PLAN, PIVOT: Case Study



Yee, Jennifer A., and Cheri, Ashley E. (2019). Theorizing a Sustainable-Holistic-Interconnected-Partnership Development Model with Feminist, Activist Lenses: Best Practices from a Community-University Service-Learning Partnership in Asian American Studies. *AAPJ Nexus: Policy, Practice and Community: 2018-2019, Vol. 16, No. 1-2*, pp. 64-84. <https://doi.org/10.36558/nexus16.1.2.64-84>. YeeCheri

Questions: Case Study

- Any thoughts/responses about the Case Study?
- Any questions/clarifications on how the SHIP Development Model helped to conceptualize and direct partnership development for ASAM 230?



Yee, Jennifer A., and Cheri, Ashley E. (2019). Theorizing a Sustainable-Holistic-Interconnected-Partnership Development Model with Feminist, Activist Lenses: Best Practices from a Community-University Service-Learning Partnership in Asian American Studies. *AAPJ Nexus: Policy, Practice and Community*: 2018-2019, Vol. 16, No. 1-2, pp. 64-84. https://doi.org/10.36650/nexus16.1-2_64-84 YeeCheri

Discussion

- Would this model be helpful/useful to you?
- Are there challenges you've faced in conducting service and maintaining partnerships?
 - How did you get through it?
- How do you see yourself using this model moving forward?



Yee, Jennifer A., and Cheri, Ashley E. (2019). Theorizing a Sustainable-Holistic-Interconnected-Partnership Development Model with Feminist, Activist Lenses: Best Practices from a Community-University Service-Learning Partnership in Asian American Studies. *AAPJ Nexus: Policy, Practice and Community*: 2018-2019, Vol. 16, No. 1-2, pp. 64-84. https://doi.org/10.36650/nexus16.1-2_64-84 YeeCheri

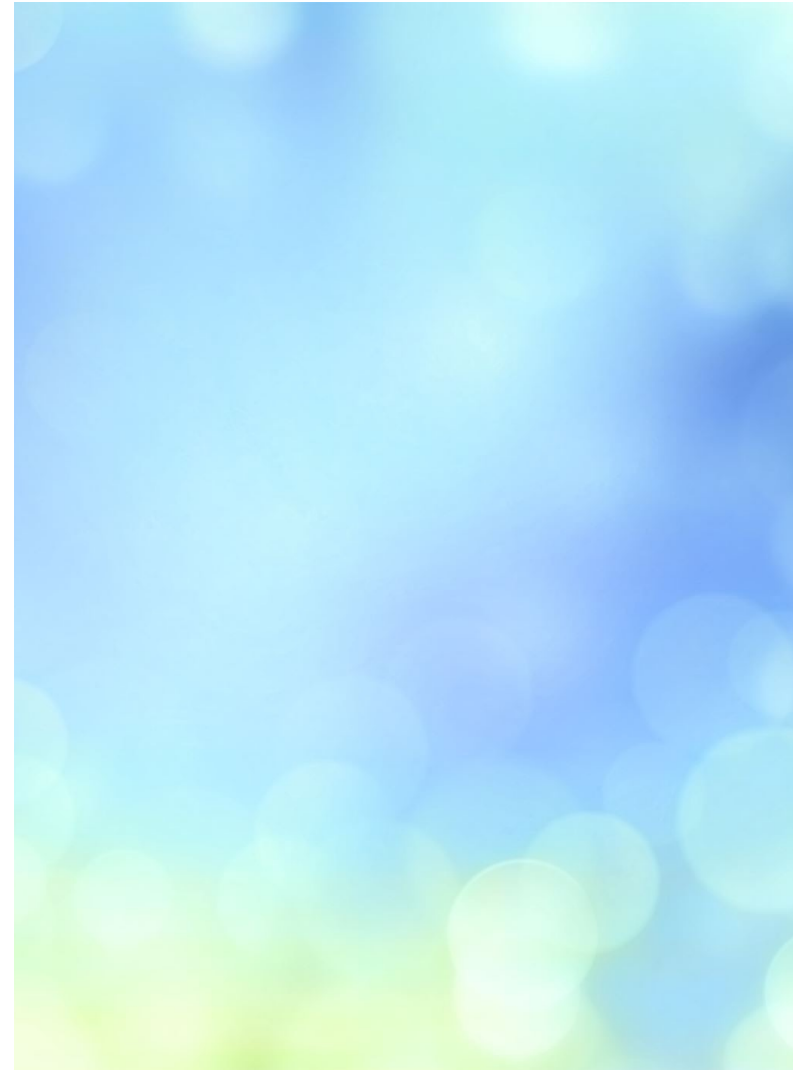
Moving to Change and Action



What one step can you take moving forward?
What will you do?

Resources

- Cheri, A. E. (2019). The inclusion of community: A phenomenological study examining faculty development of service learning curricula. (Accession No. 27762721) [Doctoral Dissertation, California State University, Fullerton. ProQuest Dissertations Publishing. <https://www.proquest.com/openview/b65589eec33bc5e250fe00d6d9840ca8/1.pdf?pq-origsite=gscholar&cbl=18750&diss=y>
- Yee, J. A., & Cheri, A. E. (Fall 2018-19). Theorizing a sustainable, holistic, interconnected partnership (SHIP) development model with feminist, activist lenses: Best practices from a community-university service-learning partnership in Asian American Studies. *AAPI Nexus Policy, Practice and Community Journal*, 16(1 &2), 64-84, https://doi.org/10.36650/nexus16.1-2_64-84_YeeCheri
- Yee, J. A. (2020). Civic engagement through Asian American and Pacific Islander studies: Cultivating capacity for social justice through critical service learning. *Journal of Community Engagement and Higher Education*, 12(1), 39-49, <https://discovery.indstate.edu/jcehe/index.php/joce/article/view/557>
- Yee, J. A., Tong, K., Le, Q., Le, V., Doan, P., Tao, M., & Villanueva, A. (2021). Sparking a commitment to social justice in Asian American studies: Critical service learning that centers “community” to inspire leadership, activism, and social change. *Michigan Journal of Community Service Learning* 27(1), DOI: <https://doi.org/10.3998/mjcsloa.3239521.0027.104>



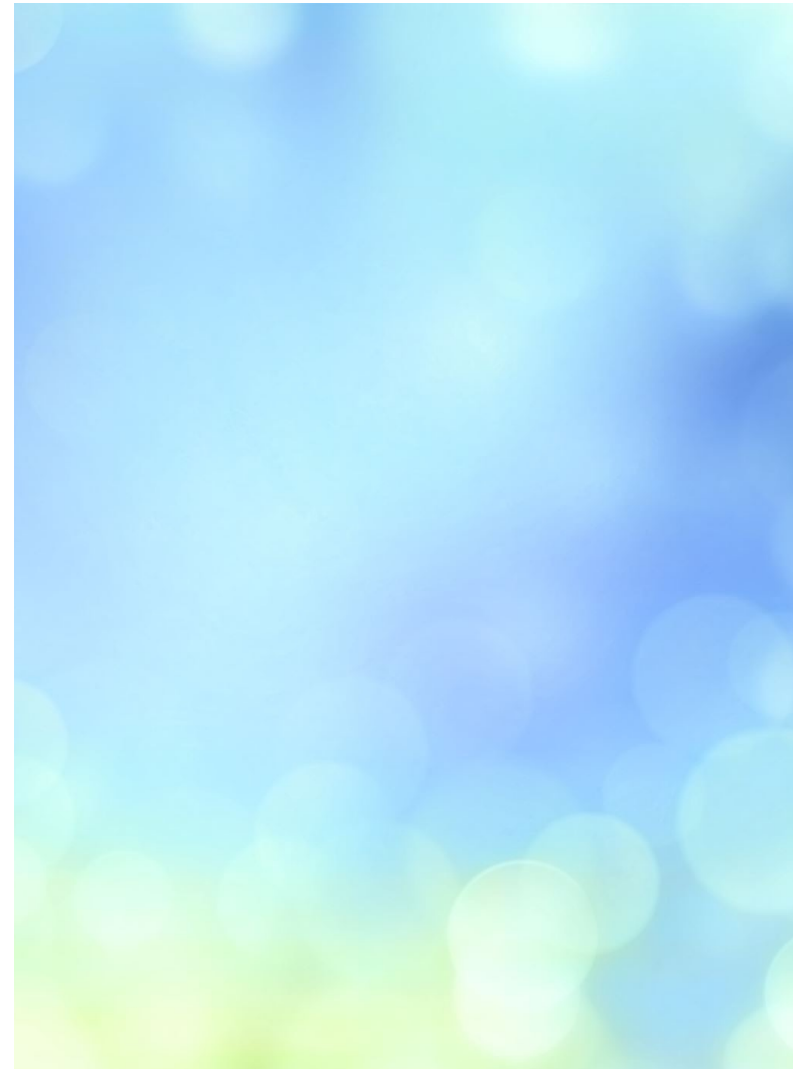
Feedback

We welcome your feedback 😊

<https://bit.ly/PausePlanPivotYEECHERI>



if you would like a copy of the slides, please drop your email in the chat



Pause, Plan, and Pivot: Cultivating Service Learning Partnerships During the Pandemic

Jennifer A. Yee, Ph.D. & Ashley E. Cheri, Ed.D.

Department of Asian American Studies, California State University, Fullerton
Center for Educational Partnerships, University of California, Irvine

Sponsored by

Rob Pierce

California State University, Fullerton
Center for Internships and Community Engagement

&

Faculty Development Center

Tuesday, April 12, 2022