



Academic Affairs

Academic Affairs



ACADEMIC AFFAIRS

Vice President for Academic Affairs
Academic Advisement Center
Academic Programs
Academic Senate
Admissions and Records
Center for Community Service-Learning
Classroom Technology Support Center
Distance Education
Faculty Affairs and Records
Faculty Development Center
Graduate Studies
Grants and Contracts
Information Technology
Institutional Research and Analytical
Studies
International Programs
Paulina June and George Pollak Library
University Extended Education
University Outreach

INTRODUCTION

California State University, Fullerton offers affordable, high quality undergraduate and graduate programs that reflect the best of current practice, theory and research in linking professional studies with preparation in the arts and sciences to meet the evolving demands of our diverse students, as well as our local community and state. The academic programs available include 54 bachelor's degrees, 46 master's degrees, 50 minors, 5 resident certificates and 11 teaching credential programs.

One of the most important features of the university's mission and goals is to make learning central to our campus. We aspire to this vision by combining the best qualities of teaching and research universities in supporting actively engaged students, faculty and staff who work in close collaboration to expand knowledge. The mark of a Fullerton graduate will be a person who has developed the habit of intellectual inquiry, prepared for a challenging profession, strengthened relationships with the community, and contributes productively to society.

Academic excellence is provided in the various specializations offered by the university by encouraging departments and professional schools to develop programs for their majors through a formal process that ensures careful and thoughtful review by various levels of the university.

The General Education Program is designed to assure that each graduate has made significant progress toward being a well-educated person by integrating into the major programs broad courses in the physical sciences, social sciences, humanities, and fine arts. These courses are planned to complement those offered through the major programs and electives. Articulation agreements with the local community colleges clarify the courses that will be accepted for credit in both general education and major programs.

VICE PRESIDENT FOR ACADEMIC AFFAIRS

McCarthy Hall 133
(714) 278-2614

The vice president for Academic Affairs is chief academic officer for the campus and is directly involved in the implementation of the university's mission and goals, faculty personnel processes, and budget and resource allocation as they pertain to instruction and academic support. Working with the president, the academic associate vice presidents, deans, and program directors, the vice president for Academic Affairs provides leadership for all academic planning and operational matters.

Information concerning the academic programs of Cal State Fullerton may be obtained from the Office of the Vice President for Academic Affairs. This information may include:

1. Current degree programs and other educational and training programs;
2. Instructional, laboratory and other physical plant facilities that relate to the academic program;
3. Faculty and other instructional personnel;
4. Data regarding student retention at Cal State Fullerton and, if available, the number and percentage of students completing the program in which the student is enrolled or has expressed interest; and
5. Names of associations, agencies or governmental bodies that accredit, approve or license the institution and its programs, and the procedures under which any current or prospective student may obtain or review upon request a copy of the documents describing the institution's accreditation, approval or licensing.

ACADEMIC ADVISEMENT CENTER

University Hall 123

(714) 278-3606

www.fullerton.edu/aac

The Academic Advisement Center provides academic counseling to matriculated students with respect to the General Education Program and the policies/procedures associated with that program. The Academic Advisement Center is the academic home department for undeclared students, providing services normally given through the student's declared major department. Additionally, the center provides programs and services to assist students in the selection of a major.

Students seeking information about the implications of academic probation and disqualification are encouraged to visit the Academic Advisement Center for a personal consultation.

Please consult the Academic Advisement Center website for useful information about the General Education Program, graduation requirements, and university policies and procedures. The center provides walk-in advisement, no appointment necessary.

ACADEMIC PROGRAMS

McCarthy Hall 111

(714) 278-3602

The Office of Academic Programs coordinates the development of academic degree programs; provides an all-university perspective on educational activities at the campus; and stimulates academic innovations in a context of high quality.

The associate vice president for Academic Programs is responsible for administering university policies and regulations dealing with graduate curricula; fostering and administering institutional exchange programs with foreign universities; preparing and publishing the university catalog; and serving as liaison to the Western Association of Schools and Colleges (WASC) and other accrediting agencies. The associate vice president also serves as director for the university's Center for Public Policy.

The assistant vice president for Academic Programs is responsible for administering university policies and regulations dealing with undergraduate curricula, including the General Education Program; provides leadership to academic support programs and departments; and coordinates campus remediation efforts.

The Office of Academic Programs provides leadership for the Curriculum Committee, General Education Committee, Graduate Education Committee, International Education Committee and other groups and individuals concerned with assessing and strengthening the educational programs of this institution. Responsibilities related to the Office of the Chancellor of The California State University include regular review and updating of the Academic Master Plan; coordination of program performance review; and staff reports for the Chancellor's Office relating to academic planning and accountability.

ACADEMIC SENATE

McCarthy Hall 143

(714) 278-3683

The Academic Senate is an integral part of university governance and collegial decision making. The Senate develops, formulates and reviews educational and professional policy that becomes university policy if approved by the president. Examples of educational and professional policy include curricula, academic standards, criteria and standards for the selection, retention and promotion of faculty members; academic and administrative issues concerning students; and allocation of resources.

There are 14 standing committees of the Senate and three general committees of the faculty. The Senate consists of 46 members including the university president, vice president for Academic Affairs, two representatives from Associated Students, CSUF, Inc., three elected CSU academic senators, the president of the exclusive bargaining representative for Unit 3, a member of the Emeritus Professors of CSUF, the immediate past chair of the Academic Senate (except when the incumbent chair is re-elected), and 35 elected members representing various campus constituencies, and two part-time faculty members.

The 14 standing committees of the Academic Senate are: Academic Standards Committee, Curriculum Committee, Elections Committee, Extended Education Committee, Faculty Affairs Committee, Faculty Development Center Board, General Education Committee, Graduate Education Committee, Information Technology Committee, International Education Committee, Library Committee, Planning, Resource and Budget Committee, Student Academic Life Committee, and University Advancement Committee.

Shared governance at CSUF involves the Senate and other faculty members through memberships on boards, ad hoc committees, and general committees, in addition to the standing committees. Representing the faculty, the Senate works with administrators, staff and students, exemplifying "The Fullerton Way" of collegial governance.

ADMISSIONS AND RECORDS

Langsdorf Hall 114

(714) 278-2300

The Office of Admissions and Records is responsible for the administration of the admission, registration, records, and other academic services to undergraduate and graduate students in the regular sessions of California State University, Fullerton. These programs and services provide preadmission guidance to prospective students and current information about the university's curricula and requirements to school and college counselors; admit and readmit students within enrollment categories and priorities; evaluate the applicability of undergraduate transfer credit toward all-university requirements of the curriculum; provide liaison in the identification and resolution of articulation problems of transfer students; and maintain the university's community college relations program.

Units of Admissions and Records also register student programs of study, including enrollment into classes; maintain academic records; administer academic probation and disqualification policies; provide enrollment certifications on student request, including transcripts of academic records to the Veterans Administration and for other purposes; certify the completion of degree requirements; receive petitions for exceptions to academic regulations; and provide information about these programs and services.

CENTER FOR COMMUNITY SERVICE-LEARNING

University Hall 230

(714) 278-3746

The Center for Community Service-Learning supports faculty in the utilization of service-learning pedagogy of engaging students with community partners to address current community issues while enhancing the learning goals and academic content of a particular course. The center assists faculty in identifying the appropriate community agency partners in the placement of students for appropriate

service activities designed to complement concepts learned in the classroom. The center also provides training and consulting to faculty, community agencies and students in developing quality service-learning environments, activities and partnerships for CSUF students.

CLASSROOM TECHNOLOGY SUPPORT

McCarthy Hall 63

(714) 278-2621

Classroom Technology Support (CTS) is located on the lower level of McCarthy Hall Room 63. The CTS department has installed and continues to maintain the new multimedia equipment in all of the interdisciplinary classrooms located throughout the campus. These "smart classrooms" facilitate both the teaching and learning experience of all members of the university community. Classroom Technology Support also provides small-scale sound reinforcement (PA sound systems) for events conducted on campus.

Faculty and staff of the university can contact the CTS department to obtain training and technical assistance on the use of the equipment in the "smart classrooms." For detailed information and lists of "smart classroom" training dates and times, contact Classroom Technology Support at (714) 278-2621.

DISTANCE EDUCATION

Pollak Library South 45

(714) 278-4752

The Department of Distance Education serves as a source for production, delivery, information, grant assistance and experimentation in the area of distance education.

A comprehensive Web development support team (including instructional design, graphic design and programming) works one-on-one with faculty and departments to develop various online courses and applications. Services include development of online courses using Blackboard or other applications; development and streaming of online presentations (live or archived streaming); and multimedia application development for tutorials, Internet educational games, virtual tours and more.

Instructional Televised Instruction (ITI)

includes one-way video/two-way audio transmission (ITFS) and interactive videoconferencing. Three classrooms are designed and equipped for distance education and currently deliver university classes to the El Toro Campus, Garden Grove Center and other off-campus locations, including workplace classrooms in businesses and industry. Students at remote sites can interact with instructors, as well as with on- and off-campus classmates in a "live" exchange of information and ideas. A special videoconferencing facility is available for instruction and administrative use.

Satellite teleconferencing is also available, and the Titan Cable Channel network makes CSUF programming available on commercial cable systems throughout Orange County.

For detailed information, contact the Office of Distance Education at (714) 278-4752.

FACULTY AFFAIRS AND RECORDS

McCarthy Hall 129

(714) 278-2125

The Office of Faculty Affairs and Records is the official repository for documents and correspondence concerning full-time teaching and administrative faculty. It has responsibility for retaining documentation pertaining to employment, reappointment, tenure, promotion, leaves of absence, grievances, disciplinary actions and separations.

FACULTY DEVELOPMENT CENTER

Pollak Library South - 44

(714) 278-2841

Established in 1998, the Faculty Development Center is funded by the Office of the President and is charged with promoting faculty development, vitality and enrichment. The FDC is responsible for designing and implementing a comprehensive program of support for all instructional faculty across a broad spectrum of professional activities, including but not limited to: teaching and learning, use of instructional technologies, scholarly research and creative activities, professional and service activities, and other campus-wide intellectual and community-building events.

The FDC is based on a number of guiding principles. The FDC: (1) recognizes and champions faculty in their multiple roles (e.g., as teacher, scholar, professional, community member) and acknowledges the broad range and depth of their varied accom-

plishments; (2) focuses on increasing faculty and thereby student learning; (3) promotes cross-departmental, college and unit interactions and fosters collaboration among faculty, administrators and staff with shared interests and professional development goals; (4) reflects an awareness of different patterns of faculty growth and development and offers comprehensive, on-going, developmental, and flexible support programs; (5) recognizes individual scholarly and creative pursuits, as well as collaborative activities and developments; (6) creates opportunities for discipline-specific, as well as cross-disciplinary shared learning and experimentation emphasizing transferability of knowledge; (7) informs faculty about the impact of external factors on the institution and fosters concomitant dialogue and adaptation; (8) reduces a sense of isolation among faculty, administrators, students and other units on campus by building community; (9) encourages and appropriately supports faculty in undertaking new roles and responsibilities and in further developing current skills (e.g., in the areas of student learning outcomes assessment and instructional technology); and (10) connects faculty growth and development to the university's vitality and seeks a balance between institutional, faculty, and student goals and needs.

Given these goals and principles, the FDC represents a collaborative effort that includes an administrative director and staff, as well as a team of faculty coordinators and liaisons, and a Senate-convened, 19-member Advisory Board with representation from faculty, administrators and students.

Specific activities of the FDC include: coordinates several funding programs directly supporting teaching and scholarly/creative activities; provides individualized and group support and training to faculty in instructional technology and use of assessment; provides support to faculty regarding special issues (e.g., peer support of teaching, diversity issues, statistics and research design consultation); assists new and tenure-track faculty with an on-going orientation and retention/tenure/promotion workshop series; works with part-time faculty and lecturers; sponsors an annual program of support for chairs; arranges campus-wide conferences, seminars, workshops, and colloquia across a large variety of special topics; publishes periodic newsletters; maintains a current resource library; and

sponsors community-building and campus cultural activities.

In addition to the above activities, the Faculty Development Center provides the Decision Support Center (DSC), a facility designed to enhance, expedite and improve meeting and decision-making processes campus wide. The DSC is a special meeting room with a 20-workstation LAN equipped with GroupSystems (<http://www.groupsystems.com>), a software package that facilitates group idea generation, discussion and consensus building.

The DSC is open to faculty, administrators and staff at CSUF for almost any type of meeting that can be expedited and assisted with GroupSystems software. These include, but are not limited to: personnel decisions, curriculum design or redesign, departmental meetings that identify problems and their solutions, new policy development, and focus group discussions. The DSC cannot be used as a teaching facility. To learn more about the center, visit <http://fdc.fullerton.edu/dsc/> or call (714) 278-4719.

For more information on specific activities, programs and events, contact the director of the Faculty Development Center, Dr. Sandra Sutphen, at (714) 278-5628 or Leticia Stotler, executive assistant to the director, (714) 278-2841.

GRADUATE STUDIES

McCarthy Hall 103

(714) 278-2618

The staff of the Office of Graduate Studies assists students in answering questions about graduate academic policies and procedures, graduate programs, and other matters of concern to graduate students. The office is also responsible for performing an evaluation of student programs at classification and at completion of requirements for authorizing award of the degree. Additional responsibilities of this office that are related to students include probation and disqualification, leave of absence, the annual thesis award, and various fellowships and scholarships.

GRANTS AND CONTRACTS

McCarthy Hall 112

(714) 278-2106

The Office of Grants and Contracts provides assistance to faculty and staff in their efforts to obtain funding for research and other scholarly activities. The office offers pre-proposal consultation; information about funding opportunities; and assistance with budgets, regulatory compliance and editing of proposals. It also publicizes and administers intramural research grants and manages technology transfer activities. The office coordinates campus approval of government grants, as well as most corporate and government contracts, for projects in research, instruction or service.

INFORMATION TECHNOLOGY

Pollak Library 260

(714) 278-3921

Information Technology supports the campus mission by providing technology solutions and services to campus business and administrative practices. The division manages the university's telecommunications infrastructure, administrative website, administrative computing resources, faculty and staff workstations, and network services for e-mail. Information Technology provides the campus with a campus card and stored value-system; Internet remote access for students, faculty and staff; and a campus-wide computer lab with 240 workstations.

INSTITUTIONAL RESEARCH AND ANALYTICAL STUDIES

McCarthy Hall 136

(714) 278-4205

www.fullerton.edu/analyticalstudies

Institutional Research and Analytical Studies provides and promotes institutional self-understanding through research and analysis. The office is responsible for organizing and presenting research results, models, alternative scenarios, and other information essential to campus policy formulation, academic planning, resource allocation, assessment and quality, and institutional effectiveness.

Enrollment trends and forecasting, student and faculty demography, recruitment and retention, resource allocation and utilization, curricular change and student learning, and any other topic relevant to documenting and improving educational and institutional effec-

tiveness are all within our purview. The office is an all-university, central resource for institutional facts and figures, methodological advice and problem solving, and is also the chief source of official statistics for the campus.

INTERNATIONAL PROGRAMS

McCarthy Hall 111

(714) 278-3602

The Office of Academic Programs, in cooperation with the Office of International Education and Exchange, coordinates all aspects of the university's commitment to academic internationalization. It is responsible for overseeing and directing the internationalization of the curriculum. It also initiates and administers contacts with sister institutions throughout the world in order to foster the exchange of faculty and students. For further information, see the section of this catalog titled "International Programs."

For more information on specific opportunities for students to study abroad, either through the CSU system-wide International Program or direct links that CSU Fullerton has with foreign institutions, see the section of this catalog titled "International Education."

THE PAULINA JUNE & GEORGE POLLAK LIBRARY

(714) 278-2714/2633

Chief among campus learning resources is the Pollak Library, named in 1998 after Dr. Paulina June Pollak – a CSUF English Professor Emerita – and her husband George. Located at the center of the campus and offering collections of nearly 3 million items, the Library consists of a six-story South Wing and a newer four-story North Wing.

In addition to book and bound periodical collections of more than 1 million volumes, the Library provides access to more than 100 online databases, and more than 2,000 electronic journals, and contains a wide array of other materials, including government publications (federal, state, local and international), audiovisual collections, archival and rare items, maps, microforms and computer software. Books and other materials are selected to support the learning mission of the university.

As part of the university's learning mission,

the Pollak Library offers a variety of instructional programs and services. Library faculty conduct instructional sessions for CSUF classes in all disciplines, as well special workshops focused on electronic resources. One-to-one instruction in the use of the Library's collections and services is provided at the main Reference Desk and the Library's other service desks. General Library orientation sessions are available for CSUF students, faculty and staff, and other campus-affiliated groups.

The Pollak Library's home page (<http://www.library.fullerton.edu>) serves as the gateway to the Library, both onsite and remotely. The home page, including special sites for faculty and graduate students, offers a wealth of information about the Library's collections and services.

Access to the home page, with its links to many Library and Internet resources, can be gained from computer workstations in the Electronic Resources Area, as well as in the Internet Oasis and the Titan Computing Lab. Docking stations for laptop computers with modems are also available throughout the Library facility.

Access to Library resources, as well as other Internet resources, is available from campus offices, classrooms, computer labs and the residence halls. Remote access to these resources is offered through the Titan Internet Access Service and other Internet service providers via the proxy server.

The TitanCard issued by the university serves as a Library card for checking out books and other materials. Library users are responsible for the on-time return of all materials charged out on their cards.

For the convenience of users, photocopiers, printers, and microform reader-printers are available in locations throughout Pollak Library. These are operated with coins or TitanCards. Other specialized facilities include music listening rooms, videotape viewing rooms, group study rooms, and a microform reading area.

Beyond the many resources available on campus and via the home page, mutual use agreements make accessible to students and faculty the collections of the 23 other libraries in the California State University system and several neighboring institutions.

Intralibrary services provide delivery of

Library resources to CSUF's El Toro Campus as well. Document delivery and interlibrary loan arrangements with commercial providers, as well as libraries throughout the world, expand even further the information resources available to the CSUF community.

UNIVERSITY EXTENDED EDUCATION

Registration & Information: Building T-14 (714) 278-2611

University Extended Education is a rich and varied component of Cal State Fullerton. UEE works with university academic units to create and administer programs that extend Cal State Fullerton's resources out into the community. This includes:

Academic Credit Programs - Intersession, Open University (also known as adjunct enrollment), the Spectrum MBA, the Master of Science in Taxation in South Orange County, and a Master of Science in Counseling.

Professional Continuing Education and Extension Programs - professional development and personal enrichment through continuing education classes and certificate programs in computers and information technology, management, biotechnology, engineering, human services, human resources and manufacturing and distribution.

Custom Corporate Training Programs - classes taught on-site by industry leaders and tailored to fit each company's training needs.

Programs for Educators - professional development opportunities for educators in the areas of reading, mathematics, fine arts, beginning teacher training, technology, special education and foreign language.

The American Language Program - a program of intense English instruction for pre-university and Cal State Fullerton students.

Center for Community Collaboration - a partnership between University Extended Education and the College of Human Development and Community Service. The center provides professional development for the helping professions, as well as opportunities for research and community capacity building.

Distance Education - classes and programs

delivered through electronic means such as interactive television and the Internet.

Lifelong Learning - extends the university's resources out in the community through Continuing Learning Experience (CLE) - a learning in retirement program; an educational partnership with the Fullerton Arboretum; and special summer camps for children.

International Programs - extend the university's resources in the global community via academic credit courses, certificate programs and other learning experiences.

Additional information may be found in the Academic Programs section of this catalog.

UNIVERSITY OUTREACH

University Hall 210B

(714) 278-2086

The mission of University Outreach is to increase the enrollment rates of first-time freshmen who apply for admission to the university. University Outreach develops and coordinates a comprehensive array of outreach services and recruitment activities to make the university more visible and accessible to potential applicants from diverse educational, economic and cultural backgrounds.

University Outreach provides services that include pre-admissions and higher education awareness programs, academic advisement, on-site admissions, presentations and workshops on college admissions requirements, student support services, campus tours, and dissemination of information about the university's admission process and procedures to the general public and community.

University Outreach also hosts several pre-collegiate programs designed to motivate and encourage K-12 students to pursue post-secondary opportunities.

Freshman Programs

INTRODUCTION

Each of the Freshman Programs at Cal State Fullerton is a learning community of first-year students, caring faculty members and student affairs professionals dedicated to academic success, personal development and community involvement. The foundation of every community is enrollment in pre-selected courses; most satisfy general education requirements, and students often have reserved seats in these courses.

Students who apply and are admitted to one of the communities have access to special mentoring programs, new student orientation programs, academic field trips, co-curricular activities and academic advisement. Students also engage in service-learning and enjoy leadership opportunities through campus clubs and organizations, which are facilitated through linkages to Student Affairs, Associated Students, CSUF, Inc, and the Freshman Programs Student Association.

All of these communities are designed to promote college success by easing the transition to college life. Faculty and staff members offer encouragement and motivation to persevere during the first semester and the first year. First-year students who participate in Freshman Programs make friends more easily, become connected to the university and its faculty and staff, and receive special assistance from tutors and teaching assistants who are associated with the programs. Students learn academic study skills and receive assistance in accessing the resources of the university to improve writing and technology skills. In addition, some Freshman Programs also offer special resources for family members, including parent newsletters and e-mail assistance from faculty or staff members.

Each of the Freshman Programs includes a community-based service-learning experience in a pre-screened organization to assist students with career exploration, community networking, critical thinking, problem-based learning and communication skills.

Fullerton First Year Community

The Fullerton First Year Community is a two-semester experience. All FFY students take 12-16 units in the fall semester and six units in the spring semester as part of the program. This is the largest of the Freshman Programs, with 150 students admitted each summer.

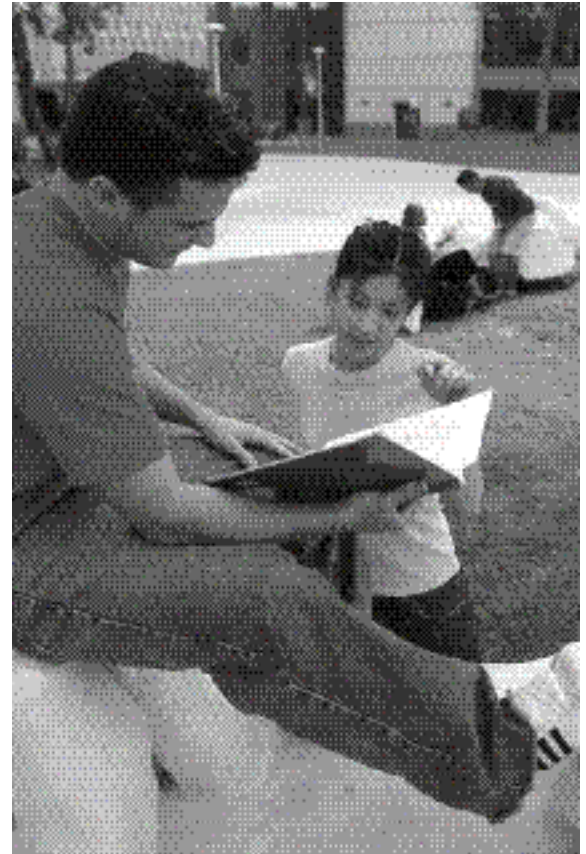
FFY students fulfill requirements for first-year mathematics, English, philosophy and political science. The Freshman Programs Office will assist with enrollment in special sections or reserve special seats in courses for FFY students. Faculty members who are part of the FFY instructional team meet before, during and after each semester to coordinate various aspects of the curriculum.

All students enroll in a three-unit first-year seminar in the fall semester, University 100, which includes technology and library competence, time management and study skills training, and an introduction to campus resources. The course is taught by an instructional team that includes a faculty member, a student affairs professional and a peer mentor. Upper-division students are trained in peer mentoring by the Freshman Programs Office; most are former FFY students themselves. Peer mentors offer student-to-student support along with the benefit of their personal experience at Cal State Fullerton.

In addition, FFY offers academic field trips in both the fall and spring semesters and a service-learning experience in the spring semester. Students in FFY are encouraged to assume leadership roles in campus clubs and organizations through linkages with the Student Leadership Institute and other Dean of Students programs.

COMPASS Community

The COMPASS community is a one-semester learning community that is offered in both the fall and spring semesters. It is designed for freshmen who have not yet declared a major, or who are unsure about their choice of major. The COMPASS community offers first-year students



FRESHMAN PROGRAMS

Fullerton First Year Community
COMPASS Community
Live 'n' Learn Community
Trail Ratified Experimental Knowledge (TREK)
Freshman Success

DIRECTOR, FRESHMAN PROGRAMS

Bridget E. Driscoll

COORDINATOR, FRESHMAN PROGRAMS

Jennifer Lukridge

FRESHMAN PROGRAMS OFFICE

(714) 278-3709

DEPARTMENT WEBSITE

www.fullerton.edu/freshmanprograms

a guided process of self-assessment and a systematic examination of the contemporary workplace.

Students enroll in two linked courses, for a total of six units: English 101 or Oral Communication and Counseling 252 (Career Exploration and Life Planning). There is a service-learning experience embedded in this program to enhance the career exploration process. Additional units above and beyond the six units are selected by the student and his or her adviser.

Staff members from the Career Planning and Placement Center and the Academic Advisement Center collaborate with the Freshman Programs Office to offer students a structured experience, utilizing electronic self-assessments and some Web-based instruction. In addition, CSUF alumni serve as career mentors for COMPASS students, offering their advice and consultation on preparing for today's rapidly-changing workplace. These community leaders represent a variety of careers, including entrepreneurial occupations. Career mentors meet with all COMPASS students twice each semester and offer networking opportunities for students in all majors.

Live 'n' Learn Community

The Live 'n' Learn community is a one-semester community that is offered each fall semester for first-year students who live in the on-campus residence halls. The program helps create a sense of community and connection among students who share the same address, and it focuses on oral communication skills as part of the transition to a successful college experience. Participants in this community are also enrolled in a one-unit, first-year seminar that covers time management, technology and writing skills, plus assistance in using library resources and health services. A service-learning experience is part of the first-year seminar experience. Additional units are selected by the student, with assistance from academic advisers.

Students in this program participate in a special summer orientation for family members and entering freshmen. Live 'n' Learn also provides an electronic newsletter with frequently asked questions for parents and extended family members. Freshman Programs staff members also are available to answer questions about the transition to college life and a new Cal State Fullerton identity.

All students in the Live 'n' Learn community are matched with two mentors – a peer mentor and a faculty or staff member. Student preferences for faculty interests and expertise are

incorporated into the matching process.

TREK

TREK (Trail Rated Experimental Knowledge) is a unique earning experience that uses the wilderness as a natural learning environment. Students in this community travel on two field trips in a wilderness setting, including a one-day trip to the local mountains and an eight-day backpacking trip in the Sierra Nevada. Also, students complete two college courses in geography and philosophy (6 units) prior to the fall semester, and develop strong teamwork and leadership skills while making new friends.

This learning community features hiking through interactive geography lessons, philosophizing over nightly campfires, and challenging oneself both mentally and physically while developing skills important for intellectual and academic growth.

The two classes offered through this community are Philosophy 101 (Meaning, Purpose and the Good Life) and Geography 120 (Global Environmental Problems). This is a four-week community that runs from the end of July to the end of August, before the beginning of the fall semester.

Freshman Success

Freshman Success supports incoming freshmen not meeting English and/or mathematics entrance requirements by providing an opportunity to take remedial course work prior to the fall semester.

Students in this learning community gain a jump-start on fulfilling critical remedial courses, catch up on classes to help facilitate an on-time graduation, and earn between 3-6 units in 6 weeks within a supportive and focused learning environment. Students have access to tutoring through one-on-one and group sessions in English and mathematics. The community emphasizes building important relationships with faculty, staff and other CSUF students, and learning about the campus through hands-on experiences.

Students in this community will take a one-unit University 100 course, remedial math or English depending on test scores, and supplementary courses as offered. The University 100 course is taught by a faculty member and a peer mentor.

Application Process

To participate in any ONE of the Freshman Programs, students must:

- Be admitted to CSUF as a freshman (college transfer students are not eligible). Contact the Evaluations Unit of the Office of Admission and Records at (714) 278-2396 for additional information regarding admissions.
- Complete the application on the website or call us for a brochure and application. Preference will be given to students who apply early. Contact the Freshman Programs Office or visit the website at www.fullerton.edu/freshmanprograms for current deadlines. Applications will be accepted until all spaces in the community are filled.
- Register for the Entry Level Mathematics (ELM) examination and the English Placement Test (EPT). A letter of admission will describe your status. Placement test scores or verified exemption are required to register for fall semester classes. Call University Testing Services at (714) 278-3838 for additional information.
- (Live 'n' Learn Community only) Students must have a paid and signed housing contract to apply for this community.
- Attend the Freshman Programs New Student Orientation. Orientation registration materials will be mailed to admitted students. Family members are welcome to attend. Students will receive guaranteed, pre-planned classes at the orientation.

Freshman Programs Student Association

All first-year students who are enrolled in a Freshman Programs community are automatically members of the Freshman Programs Student Association. Officers and governing members represent each of the separate communities. They plan academic field trips, provide input and consultation on curricular and co-curricular events to the Freshman Programs Office staff, and organize social activities for students in Freshman Programs.

Freshman Programs Advisory Board

The director of Freshman Programs reports to the vice president, Academic Programs and is advised by a diverse constituency of campus leaders and first-year students. Advisory Board members include assistant deans from each of the seven colleges, along with directors of campus programs that promote college success, institutional effectiveness and the assessment of learning community programs. The board meets three times per year to guide the policy for all CSUF Freshman Programs.

University Honors Program

INTRODUCTION

The University Honors Program at California State University, Fullerton offers a select group of students academically challenging courses, enriching co-curricular programs, and research opportunities to create a unique collegiate experience. Honors students join an intellectual and social community featuring small class sizes (15-student maximum in most honors seminars) that cultivates habits of critical thinking, independent analysis, creativity and collaboration. The University Honors Program seeks to expand its students' intellectual horizons and to foster a sense of social awareness and responsibility for service to society.

Honors Program students work closely with faculty throughout their undergraduate careers, whether completing general education requirements or working on individualized senior projects. The Honors and Scholars Center, located on the first floor of Pollak Library, fosters a strong sense of community among honor students. It provides a place to study and to socialize with fellow honor students, as well as a place to obtain academic and other advice.

Benefits

The University Honors Program provides benefits that include:

- Priority registration
- Honors notation on official transcript
- Individual attention from faculty
- Honors credit earned while studying abroad
- Social activities with fellow honors students
- Community involvement through service projects
- Opportunities to learn more about honor societies and scholarships
- Close mentoring relationships with faculty and staff members

By actively participating in this strong scholarly community, students gain leadership experience. Honors students have the option of participating in the administration and development of the Honors Program, which allows them to become active partners in their education and provides opportunities to help nurture the growth of the University Honors Program.

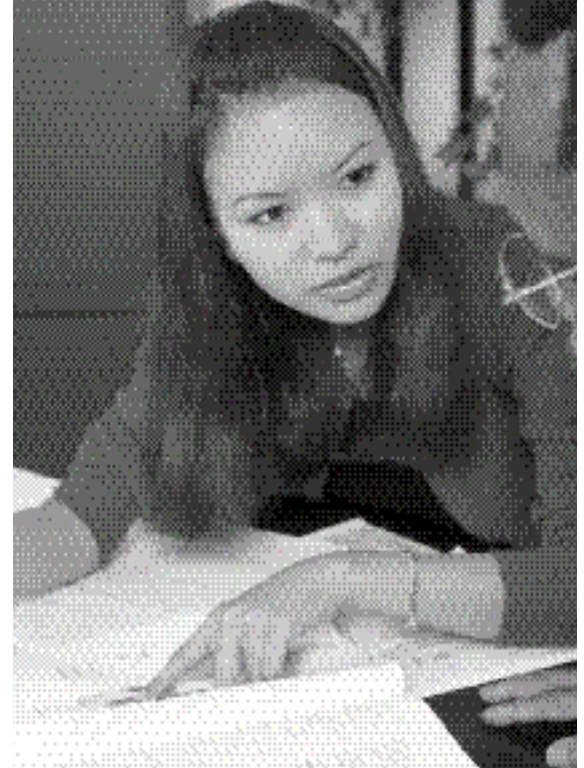
Admission Criteria

Entering freshmen who have achieved a 3.5 grade point average in college preparatory course work in grades 9, 10, 11 and the first semester of their senior year are eligible to apply to the program. Transfer students who have completed honors course work at their transfer institution and have earned a minimum CSU transferable grade point average of 3.3 are also eligible. For additional information on applying, please contact the University Honors and Scholars Center, Pollak Library North 120, at (714) 278-7440 or univhonors@fullerton.edu.

Maintaining Eligibility

To maintain eligibility, students must be enrolled full-time, participate in the Honors Program's curricular and extracurricular activities, and achieve:

- A minimum cumulative grade point average of 3.0 at the end of the first academic year.
- A minimum cumulative grade point average of 3.3 at the end of the second academic year.
- A minimum cumulative grade point average of 3.5 for University Honors recognition at graduation. Additionally, University Honors graduates must have accumulated 24 units of honors course work and completed a senior honors project. (For transfer students, at least 12 honors units must be completed through the University Honors Program at Cal State Fullerton.)



DIRECTOR, UNIVERSITY HONORS PROGRAM

Wayne Hobson

DIRECTOR, HONORS AND SCHOLARS SUPPORT SERVICES

Ryan Alcántara

PROGRAM OFFICE

Pollak Library (North Wing) 120

CURRICULUM

Honors Seminars Meeting General Education requirements (15 units required)

- 101A Critical Thinking (3)
- 101B Oral Communication (3)
- 201A American Institutions & Values to 1900 (US History requirement) (3)
- 201B American Institutions & Values since 1900 (US Government requirement) (3)
World Civilizations to 1500 (3)*
World Civilizations Since 1500 (3)*
- 301T Selected Topics in Natural Science and Mathematics (3)
Globalization and the Environment
- 302T Selected Topics in Arts and Humanities (3)
Theatre and Issues in American Society; Native North American Art and Culture; Life History Narratives and the American Experience
- 303T Selected Topics in Social Sciences (3)
History and Philosophy of American Mass Communication; The Global Economy; History, Culture, Power; The Middle East; Civic Engagement and Effective Activism
- 304T Selected Topics in Lifelong Learning (3)
Existential Group
- 305 Evolution and Creation (3)
- 306 Women in American Society (3)

Honors Colloquia and Senior Honors Project (9 units required)

- 300A Junior Honors Colloquium (1)
- 300B Junior Honors Colloquium (1)
Senior Honors Colloquium (1)*
Senior Honors Colloquium (1)*
- 497 Senior Honors Project (5-6)

All honors students must complete a senior honors project, enrolling both semesters of the senior year. Each student will work closely with a faculty member in his/her major field to design and execute an individual project of the student's choosing.

*Courses not approved as of catalog printing; check with the Honors Program Office for current registration information.

Students may elect to contract a departmental capstone seminar and/or departmental independent study to fulfill part of this requirement.

Optional

499 Honors Independent Study (1-3)

Study abroad experience may be used to substitute up to 3 units per semester of honors course work (to a maximum of 6 units). Any substitution must be requested in advance.

HONORS COURSES

Courses are designated as HONR in the class schedule. All honors courses are restricted to students enrolled in the University Honors Program.

101A Honors Seminar in Critical Thinking (3)

Seminar for first-year Honors Program students. Emphasizes the development of critical thinking skills. Interpretation, analysis, criticism and advocacy of ideas encountered in designated Honors Program activities.

101B Honors Seminar in Oral Communication (3)

Seminar for first-year Honors Program students, emphasizing oral communication skills. Construction, presentation and critical analysis of oral presentations related to the ideas encountered in designated Honors Program activities. Instruction in effective oral communication and critical thinking.

201A Honors Seminar: American Institutions And Values to 1900 (3)

Critically examines the historical development of American institutions and values, including American political culture and constitutional system. Specific attention to cultural diversity, particularly race, ethnicity, gender, and class, exploring the interaction, conflict, and cooperation of diverse groups in historical context.

201B Honors Seminar: American Institutions And Values since 1900 (3)

Critically examines the historical development of American institutions and values, including American political culture and constitutional system. Specific attention to cultural diversity, particularly race, ethnicity, gender, and class, exploring the interaction, conflict, and cooperation of diverse groups in historical context.

300A Junior Honors Colloquium (1)

Prerequisite: junior standing in the University Honors Program. Required of all junior honors students. Interdisciplinary examination of selected topics. Guest lecturers from the university and community.

300B Junior Honors Colloquium (1)

Prerequisite: junior standing in the University Honors Program. Required of all junior honors students. Orientation to advanced research and creative activity, including the senior honors project.

301T Honors Seminar in Natural Science and Mathematics (3)

Prerequisite: completion of General Education category III.A.1. or III.A.2. Interdisciplinary seminar that examines selected topics in natural science and mathematics.

302T Honors Seminar in Arts and Humanities (3)

Prerequisite: completion of General Education category III.B.1. or III.B.2. Interdisciplinary seminar that examines selected topics in arts and humanities.

303T Honors Seminar in Social Sciences (3)

Prerequisite: completion of General Education category III.C.1. Interdisciplinary seminar that examines selected topics in social sciences.

304T Honors Seminar in Lifelong Learning (3)

Prerequisite: completion of 9 units in General Education category III (Disciplinary Learning). Interdisciplinary seminar which examines selected topics in lifelong learning.

305 Honors Seminar: Evolution and Creation (3)

Prerequisite: completion of General Education category III.A.1. or III.A.2. Interdisciplinary study of evolutionary biology's impact on culture in the context of religious doctrines of creation. Examines both evolutionary theory and religious and philosophical reactions to it from Darwin to the present, including relevant educational and legal contexts.

306 Honors Seminar: Women in American Society (3)

Prerequisite: completion of General Education category III.C.1. Socio-cultural history of women and women's movements in American society. Examination of cultural models of American womanhood – maternal, domestic, sexual, social – their development and recent changes.

497 Senior Honors Project (2-3)

Prerequisite: senior standing in the University Honors Program. Supervised individual research or creative activity. Students will be working toward completion of an honors project, which is required in order to graduate with University Honors. May be repeated once for credit.

499 Honors Independent Study (1-3)

Prerequisite: junior or senior standing in the University Honors Program. Study of special topic(s) in consultation with and completed under the supervision of a member of the honors faculty, or other faculty upon approval of the Director of the Honors Program.

Honors and Recognition



HONORS AND RECOGNITION

Admission with Distinction
President's Scholars Program
Dean's Honors List
Honors at Graduation
Honor Societies
Special Interest Honor Societies

ADMISSION WITH DISTINCTION

"Admission with Distinction" is awarded to a freshman or transfer student who has demonstrated outstanding achievement in past academic work. For first-time freshmen with no previous college units earned, a grade point average of 3.50 on a four-point scale must be earned in the course work considered for admission to the university. Students who have completed fewer than 56 transferable semester units of credit must meet the grade point average for first-time freshmen and must also have earned a 3.5 grade point average on all transferable college work attempted. Students who have completed 56 or more transferable semester units are eligible, if a grade-point-average of 3.5 is earned in all transferable college work completed.

PRESIDENT'S SCHOLARS PROGRAM

The President's Scholars Program at California State University, Fullerton is based solely on merit and recognizes incoming first-time freshmen who have demonstrated excellence in academic achievement, leadership ability and community service. President's Scholars hold a prestigious position at the university. Scholarship benefits last for four years, as long as individual scholars maintain program eligibility, and include annually: full payment of CSU enrollment fees; \$750 for books and supplies; personal use of a laptop computer; automatic admittance to the University Honors Program; priority registration for classes and priority consideration for on-campus housing; complimentary parking permits for fall and spring semesters; opportunities for up to 20 hours per week of on-campus employment; invitations to numerous social, cultural and athletic events; and letters of recommendation from the president of the university.

Applicants to Cal State Fullerton's President Scholars Program must meet the following requirements:

- Apply to California State University, Fullerton as a first-time freshman prior to applying to the President's Scholars Program. Applications for the scholarship from students who have not applied for general university admission will not be considered.
- Be a legal resident of the state of California. Residency is determined by the Office of Admissions and Records for fee purposes.
- Have earned an academic grade point average of at least 3.75 (weighted) in all academic subjects for the 10th, 11th and first semester of the 12th grade, or earn a SAT or ACT composite score that is well above average. A minimum CSU eligibility index of 4050 is required. (See the CSU Undergraduate Admission Application for more information on the index.)
- Graduate high school in the same year they are enrolled as first-time freshmen at Cal State Fullerton.
- Demonstrate evidence of significant contributions to school leadership and community service activities during high school.

National Merit Scholar finalists and semifinalists are offered an automatic interview with the President's Scholars Screening Committee if they are legal residents of California, graduate high school in the same year they are enrolled as first-time freshmen at Cal State Fullerton, and apply to Cal State Fullerton as first-time freshmen. National Merit Scholar finalists and semifinalists must submit a completed President's Scholars Program application and a photocopy of their National Merit Scholarship Corporation notification letter. **The university does not guarantee acceptance of National Merit Scholars into the President's Scholars Program.**

An application packet is available from most high school guidance counselors and academic advisers, or directly from the President's Scholars Program office at Cal State Fullerton (714)

278-3458. You can also request an application by e-mail at scholars@fullerton.edu, or download an application from the program website at www.fullerton.edu/evp/scholars.htm.

DEAN'S HONORS LIST

Academic achievement is recognized each fall and spring semester for undergraduate students whose grade point averages for the term are 3.5 or better for 12 units of graded course work. Students are notified in writing by their college dean's office when they have earned this distinction and a notation is placed on the student's academic record for that semester.

DEPARTMENTAL HONORS PROGRAMS

In addition to the University Honors Program, upper-division students are offered other opportunities to participate in an honors community. The College of Business and Economics has a Business Administration Honors Program, which includes special honors courses that meet business core requirements. Accounting and Political Science departments offer departmental-based honors programs as well. Details on these programs are listed under the respective department sections of this catalog. Interested students may contact the departments directly to learn how to apply.

HONORS AT GRADUATION

Honors designations at graduation are awarded to baccalaureate recipients based on overall performance and have been defined by the Academic Senate in three classifications:

<i>cum laude</i>	GPA 3.50-3.74
<i>magna cum laude</i>	GPA 3.75-3.89
<i>summa cum laude</i>	GPA 3.90-4.00

HONOR SOCIETIES

Council of Honor Societies

The Council seeks to provide a forum for collaboration and coordination among the various local, national and international honor societies at California State University, Fullerton as they seek to promote, advance and recognize the campus community of scholars and student pursuit of academic excellence. Adviser: Ryan Alcántara, University Honors & Scholars.

Discipline-Based Honor Societies

Chapters of 17 honor societies have been chartered at California State University, Fullerton to recognize students who demonstrate superior scholarship and leadership in specific academic fields.

Alpha Kappa Delta - Promotes social research for the purpose of the improvement of the human condition and recognizes high scholastic achievement among juniors, seniors and sociology graduate students. Adviser: Gerald Rosen

Alpha Mu Alpha - Recognizes excellence in the field of marketing. Adviser: Scott Greene, Marketing

Alpha Phi Sigma - Criminal Justice Honor Society provides students with references for possible careers in the field of criminal justice. Participates in field trips to gain insight into the field. Adviser: W. Garrett Capune, Criminal Justice

Beta Alpha Psi - Encourages and gives recognition to scholastic and professional excellence in the field of accounting. Adviser: Mohsen Sharifi, Accounting

Beta Gamma Sigma - Encourages and rewards scholarship and accomplishment among business administration and economics students. Adviser: Thomas Johnson, Associate Dean, College of Business and Economics

Eta Kappa Nu - Recognizes students in electrical engineering – distinguished by scholarship, activities, leadership and exemplary character – and helps these students progress by association with alumni. Adviser: David Cheng, Electrical Engineering

Kappa Tau Alpha - Recognizes scholastic achievement and encourages professional standards in mass communications. Membership is by invitation to seniors and graduate students majoring in communications. Adviser: Tony Rimmer, Communications

Lambda Alpha - National anthropology honor society open to both graduate and undergraduate students that encourages and stimulates superior scholarship and professionalism among students in the field of anthropology. Adviser: Hilarie Kelly, Anthropology

Mu Phi Epsilon - Promotes high standards in education and performance in the professional world of music. Adviser: Nicole Baker, Music

Phi Alpha Theta - Recognizes and encourages excellence in the study of history. Adviser: Gordon Bakken, History

Pi Sigma Alpha - Recognizes and encourages productive scholarship in the subject of government among junior, senior and graduate students. Adviser: Raphael Sonenshein, Political Science

Psi Chi Honor Society - Advances and maintains scholarship in the science of psychology. Adviser: Duane Welch, Psychology

Sigma Delta Pi - Recognizes high academic achievement in the study of the Spanish language, the literature and culture of Hispanic nations, and other college-level subjects. Committed to academic excellence in the discipline of Spanish and to the aid of the Hispanic community. Adviser: Pilar Valero-Costa, Foreign Languages and Literature

Sigma Phi Omega - Promotes scholarship, professionalism, friendship, and services to older persons, and recognizes exemplary attainment in gerontology/aging studies and related fields. Adviser: Pauline Abbott, Psychology

Sigma Tau Delta - Confers distinction for high achievement in undergraduate, graduate and professional studies in English language and literature. The aim of Sigma Tau Delta is to promote a mastery of written expression, to encourage worthwhile reading, and to foster a spirit of good fellowship among students of the English language and literature. Adviser: Atara Stein, English

Tau Beta Pi - Promotes and encourages scholastic excellence and service among the top eighth of junior and the top fifth of senior students in all engineering disciplines. Adviser: Peter Othmer, Mechanical Engineering

The Financial Management Association National Honor Society - Encourages and rewards scholarship and achievement in finance among undergraduate and graduate students. Eligible undergraduates must have junior or senior status in the major, with a minimum 3.25 grade point average and 3.5 grade point average in three or more finance courses. Eligible graduate students must have completed one half of their required course work and maintain a minimum 3.50 grade point average. Adviser: John Erickson, Finance

SPECIAL INTEREST HONOR SOCIETIES

The following nine societies also recognize specialized groups of individuals or areas of interest, but are not limited to a specific academic field:

Gamma Sigma Alpha National Honor Society - Promotes and recognizes scholastic excellence for CSUF fraternity and sorority members with a junior or senior standing. Adviser: Shari Scott, Dean of Students Office

Golden Key International Honour Society - Promotes and recognizes scholastic excellence and service among juniors and seniors at CSUF. Adviser: Jason Lorge, Communications

Omicron Delta Kappa - Recognizes and encourages exemplary character and superior quality in scholarship and leadership. Open to students with junior standing. Adviser: Juanita Razo, Dean of Students Office

Order of Omega National Honor Society - Promotes and recognizes scholastic excellence, leadership and service for CSUF fraternity and sorority members with a junior or senior standing. Adviser: Shari Scott, Dean of Students Office

Phi Beta Delta - Honors excellence among international students, distinguishes faculty who have studied or done research abroad, and American students who have studied abroad. Chapter Coordinator: Robert B. Erickson, International Education & Exchange Program

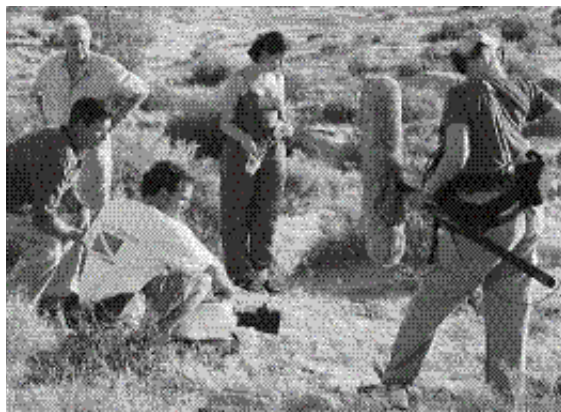
Phi Eta Sigma - Designed for freshman-level students, with chapters on more than 300 campuses nationwide, it fosters superior scholarship, exemplary character and service to both campus and community. Adviser: Jaki Coffman, Child, Family and Community Service

Phi Kappa Phi - Recognizes and encourages superior scholarship in all academic disciplines in institutions of higher learning. Faculty Secretary: Charlene Mathe, Career Planning & Placement Center

Rho Lambda - Promotes and recognizes scholastic excellence, leadership and service for members of CSUF Panhellenic sororities with a junior or senior standing. Adviser: Shari Scott, Dean of Students Office

University Honor Society - Promotes scholarship and fellowship for students participating in the University Honors Program. Adviser: Ryan Alcántara, University Honors & Scholars Center.

Research Centers



CALIFORNIA DESERT STUDIES CENTER

McCarthy Hall 387
(714) 278-2428

The California Desert Studies Center, which is located in the Mojave National Preserve at Zzyzx, California, 11 miles southwest of Baker, California on I-15, is a moderately equipped field station of the California State University system. The center provides opportunities for individuals and groups to conduct research, receive instruction, and experience the desert

environment. The center manages 1,280 acres under a cooperative management agreement with the Department of Interior.

As the gateway to the entire Mojave National Preserve and Death Valley National Park, there is easy access to fossil sites, remains of Indian villages, historical wagon trails, old army forts, mining sites, and the salt flats of Silurian and Soda Dry Lakes. Research and educational offerings include the Kelso Sand Dunes; Devil's Playground; Cima Volcanic Field; Cima Dome; the Providence, Granite and New York mountain ranges, and Landfair and Ivanpah Valleys. Elevations range from 945 feet at the center to over 6,000 feet at Pinto Mountain in the New York Range.

The Desert Studies Center can accommodate 70 individuals in dormitory-style rooms. There is also a multi-station kitchen, bathhouse, laboratory, computer lab, two classrooms and a modest library.

For more information about the use of the center, contact the Desert Studies Center, Department of Biological Science, California State University, Fullerton, California 92834 or wpresch@fullerton.edu.

CENTER FOR BUSINESS STUDIES

Langsdorf Hall 700
(714) 278-2592
Fax (714) 278-7101

The Center for Business Studies develops and conducts research, consulting and training programs for domestic and international organizations, both in the private and public sectors. The focus of such programs is on management and organizational development, formulation and implementation of strategic and tactical activities, analysis of microeconomic policy impacts on organizations, and effective resource utilization. The center also serves as the contact point for individuals and organizations seeking the expertise of our faculty members. In addition, it provides qualified support for faculty research on local, regional and transnational issues.

CENTER FOR CALIFORNIA PUBLIC ARCHEOLOGY

McCarthy Hall 212

The Center for California Public Archeology houses archeological material (much of it from Orange County) and sponsors and conducts a variety of activities for CSUF students and the community. Through field work, donations and permanent curation agreements, the center has

RESEARCH CENTERS

California Desert Studies Center
Center for Business Studies
Center for California Public Archeology
Center for Children Who Stutter
Center for Community Collaboration
Center for Demographic Research
Center for Economic Education
Center for Entertainment and Tourism
Center for Entrepreneurship
Center for Ethnographic Cultural Analysis
Center for Excellence in Science and Mathematics Education
Center for Governmental Studies
Center for Insurance Studies
Center for International Business
Center for Molecular Structure
Center for Public Policy
Center for the Study of Economics of Aging
Center for the Study of Emerging Markets
Center for the Study of Religion in American Life
Center for Successful Aging
Centers for Life Span Development
Cognitive Development Laboratory
Developmental Research Center
Decision Research Center
Family Business Council
Gianneschi Center for Nonprofit Research
Institute for Economic and Environmental Studies
Institute for Molecular Biology and Nutrition
Institute of Gerontology
Ocean Studies Institute/Southern California Marine Institute
Real Estate and Land Use Institute
Small Business Institute
Social Science Research Center
South Central Coastal Information Center
Sport and Movement Institute
Tucker Wildlife Sanctuary
Twin Studies Center

accumulated an extensive collection (about 4,000 cubic feet). With its laboratory equipment, computer facilities, comparative collections and research library, the center serves as a source for other colleges and universities, as well as professional archeologists in public agencies and private organizations. Students, alumni and other qualified community members may borrow these materials for presentations in elementary and secondary schools, and CSUF students may earn their master's degrees by analyzing these materials.

CENTER FOR CHILDREN WHO STUTTER

College Park 150
(714) 278-4570

The Center for Children Who Stutter provides assessment and treatment for young children who stutter. These very young children require state-of-the-art prevention and treatment provided by professionals who are experts in stuttering.

Education and research to improve services for children who stutter are also goals of the center. The center was a logical extension of a four-year study (1992-1996) funded by the National Institutes of Health, which provided guidance in the selection of assessment and treatment approaches and access to the families of children who stutter in our service area.

The center provides internships for students who are in the Communicative Disorders master's program. Also, workshops are available for practicing speech pathologists to update their knowledge of fluency disorders.

The Center for Children Who Stutter is supported by the Department of Speech Communication and the College of Communications. The center works closely with the National Stuttering Association, a self-help group for people who stutter, and the Stuttering Foundation of America.

CENTER FOR COMMUNITY COLLABORATION

College Park 770
(714) 278-5681

The Center for Community Collaboration (CCC) at California State University, Fullerton seeks to strengthen children, youth and families in collaboration with public agencies and community-based organizations through the cooperative activities of the College of Human Development and Community Service and University Extended Education.

The center focuses on the ever-evolving education and practice needs of the community by: (1) providing the highest quality learning opportunities through partnerships with other agencies or organizations to offer interdisciplinary training workshops and certificate programs for human services, community health and education professionals; (2) supporting applied scholarship, collaborative research, and dissemination of knowledge that informs, supports and strengthens the community such as collecting research data, identifying community needs, resources, funding streams, services and results; and (3) assisting the capacity building of communities with training and technical assistance in areas such as promising practices, outcomes assessment, and as an information resource on policy issues for organizations serving children, youth and families.

A highly regarded external advisory board, a multidisciplinary team of faculty from the College of Human Development and Community Service, and other units from the campus work to implement these goals in collaboration with the director of the center.

For more information about the center, please contact Michelle Berelowitz at (714) 278-5681.

CENTER FOR DEMOGRAPHIC RESEARCH

College Park 750
(714) 278-3009

The Center for Demographic Research was established in 1996 to ensure Orange County continues its presence in the development and support of demographic information. The center is sponsored by the County of Orange, League of California Cities - Orange County Division, Orange County Sanitation District, Orange County Transportation Authority, Transportation Corridor Agencies, Municipal Water District of Orange County, Orange County Water District, and California State University, Fullerton. These agencies govern and support the Center for Demographic Research.

The Center for Demographic Research operates in partnership with CSUF, supporting the university's learning-centered mission. The center makes its wealth of data readily available to faculty and student researchers, assists the faculty in designing instructional activities in the field of demography, and draws upon faculty research and expertise in its project activities. Through such linkages, the center provides opportunities for CSUF and other institutions of higher education to benefit from participation in regional demographic concerns.

The primary function of the center is to produce estimates and projections for housing, population and employment for a variety of geographic areas within Orange County. These efforts support both operational and long-range planning activities of various government agencies, other public or quasi-public agencies and private organizations. The center's staff engages in a variety of collaborative activities and research including: regional planning efforts; transportation modeling data preparation; and professional support of county, city, special district, and local, non-profit agency planning and evaluation efforts.

CENTER FOR ECONOMIC EDUCATION

Langsdorf Hall 530
(714) 278-2248

The Center for Economic Education at CSUF provides outreach programs in economic education for the Department of Economics. It is part of the network of California Centers affiliated with the California Council on Economic Education (CCEE) and with the National Council on Economic Education (NCEE). The major objective of the center is furthering economic literacy in the schools (K-12), institutions of higher learning and in the larger community. The center seeks to achieve these objectives through curriculum development and consultation, workshops and courses, materials dissemination and education research. The Center for Economic Education is located in the university's College of Business and Economics.

CENTER FOR ENTERTAINMENT AND TOURISM

The Center for Entertainment and Tourism serves as a coordinating unit to assist Cal State Fullerton in developing and implementing academic programs enriched by partnerships with off-campus representatives of the entertainment and tourism industries. The entertainment and tourism industries include organizations that produce and market goods and services intended for amusement and diversion and leisure. These industries comprise the following sectors: film, television, music, radio, casinos, gaming, spectator sports, theme and amusement parks, toys, retail destinations, the Internet, hotels/resorts and travel.

The Center for Entertainment and Tourism has the following goals:

1. To increase student awareness of careers and job opportunities in the entertainment and tourism industries in Southern California.
2. To encourage faculty who have expertise and professional contacts in the entertainment and tourism field to educate and mentor students interested in the field.
3. To position Cal State Fullerton as an important player in Southern California's entertainment and tourism industry.

The center maintains a professional advisory board that facilitates internship opportunities and job placement, connects entertainment professionals with faculty for research or other consulting needs, and assists with entertainment-related program development and activities on campus. The members of this board include Cal State Fullerton faculty members and executive representatives of entertainment and tourism companies in Southern California, such as the Anaheim Visitor's and Convention Bureau, American Express, AAA, Disneyland Resort, Marriott Hotels and Resorts, the Orange County Tourism Council, the Orange County Film Commission, PKF (Hospitality) Consulting, Capitol Records, and the Main Place, Fashion Island and South Coast Plaza malls.

CENTER FOR ENTREPRENEURSHIP

The purpose of the center is to develop skilled and knowledgeable entrepreneurial leaders who will successfully compete in the ever-changing business environment. The center supports entrepreneurial education and research at California State University, Fullerton and creates linkages to the region's emerging growth companies. It serves as the focus for faculty, students, alumni entrepreneurs, and friends of the university to come together and create an exciting, high-energy entrepreneurial culture. The center also aims to have cross-disciplinary links to other CSUF colleges.

CENTER FOR ETHNOGRAPHIC CULTURAL ANALYSIS

McCarthy Hall 422

The Center for Ethnographic Cultural Analysis combines training in ethnography (as a technique of observing, recording and writing about other cultures) with various forms of cultural analysis (both quantitative and qualitative). It promotes innovative educational projects, conferences, seminars and workshops. The center also serves as a resource for schools and businesses within the community that may wish to draw upon the expertise of anthropology students and faculty who are trained to observe, record and analyze the qualitative complexity of human behavior.

CENTER FOR EXCELLENCE IN SCIENCE AND MATHEMATICS EDUCATION

McCarthy Hall 527
(714) 278-4558

The Center for Excellence in Science and Mathematics Education is a joint venture of the College of Natural Sciences and Mathematics (NSM) and the College of Human Development and Community Service (HDCCS). The primary functions of the center are:

1. Coordinate K-12 science and math education activities on campus.
2. Support efforts for obtaining external funds for the improvement of science and math education.
3. Enhance outreach activities with area schools and educators.

4. Publicize existing science and math education programs at CSUF.
5. Promote increased access to science and mathematics to all students, especially underrepresented minorities, women and bilingual speakers.
6. Foster discussion and develop innovative ideas regarding current issues and methods in mathematics and science education. Sponsor and schedule seminars featuring prominent educators.
7. Promote collaboration between NSM and HDCCS faculty in improving science and math education and classroom teaching.

An advisory committee, which consists of faculty members from CSUF and community colleges, K-12 teachers and industry representatives, provides guidance for program development.

CENTER FOR GOVERNMENTAL STUDIES

University Hall 511
(714) 278-3521

The Center for Governmental Studies supports research, training and publication that assist governmental, professional and civic groups. It is housed in the Division of Political Science and Criminal Justice and draws upon departmental, community and alumni expertise. The institute publishes monographs and books, sponsors training programs, and supports theoretical and applied research which are of interest to public policy makers. Institute funds also assist in supporting the teaching mission of the department.

CENTER FOR INSURANCE STUDIES

College Park 650-17
(714) 278-3679/(714) 278-7296

The Center for Insurance Studies was established by the Department of Finance in the College of Business and Economics at the beginning of the 1998-1999 academic year, when Dr. Weili Lu was appointed director. The goal of the center is to create an organization that attracts and educates talented individuals who are committed to professional careers in the insurance and financial services industry, including property, life, benefits, risk management, and health care components. The emphasis is on careers in actuarial analysis, claims, financial planning, marketing, risk management, portfolio management, sales, technology and underwriting.

Operating strategies for the center are constantly updated with the help of industry professionals. Since the center's founding there has been strong support from the industry, including a growing number of scholarships available to business students. The Insurance and Financial Services program created by the Center for Insurance Studies is one of the six tracks in the finance major.

CENTER FOR INTERNATIONAL BUSINESS

University Hall 313
(714) 278-2223

Globalization is the reality of today's business. Even for domestic U.S. firms, the market place has shifted to an international area. Diversity among world cultures and interdependence among nations call for ongoing global exchanges and education. The Center for International Business provides a forum for such interaction and facilitates training for both domestic and international groups.

CENTER FOR MOLECULAR STRUCTURE

McCarthy Hall
(714) 278-3752 office
(714) 278-3280 laboratory

The W.M. Keck Foundation Center for Molecular Structure (CMoS) is the first comprehensive X-ray diffraction and computational facility at a predominately undergraduate institution. CMoS is a core research and education facility that provides students and faculty throughout the 23-campus California State University the opportunity for joint research and education activities directed at the determination and critical analysis for molecular structures. CMoS has been designated a core facility for research and education in this area in the California State University Program for Research and Education in Biotechnology (CSUPERB). Professor Katherine Kantardjiev, an accomplished crystallographer and physical chemist, currently serves as director of CMoS.

X-ray diffraction is the preeminent method used in characterization of molecular substances, as well as macromolecular and solid state materials. Crystal structures are essential to our understanding of fundamental processes at the molecular level. Studies at CMoS are providing answers to important questions about the molecular mechanisms of disease,

drug resistance and solar energy storage and conversion. CSU faculty and students also use CMoS research facilities in the design of novel materials, catalysts and organic synthetic reagents.

CENTER FOR PUBLIC POLICY

McCarthy Hall 111
(714) 278-3602

The Center for Public Policy seeks to enhance public policy dialogues in the Orange County community by encouraging faculty research on current local issues. Analysis of County infrastructure is a continuing interest, with focuses such as coastal water cleanliness, transportation, schools, sanitation and housing. Key programs include modest support for research, with an annual request for proposals from CSUF full-time faculty. The center also undertakes quarterly Orange County public opinion surveys in partnership with the Orange County Business Council. Director of the center is Dr. Keith Boyum, associate vice president.

CENTER FOR THE STUDY OF ECONOMICS OF AGING

Langsdorf Hall 711
(714) 278-7517

The Center for the Study of Economics of Aging was established in 2002, and Eric J. Solberg, professor of economics, was appointed as its founding director. The purpose of the center is to serve as a focal point for faculty, administrators, alumni, students and friends of the university to promote the study of economics of aging.

The objectives are: (1) to advocate and promote research on economic issues related to aging; (2) to foster collaboration between CSUF and other organizations; (3) to foster cooperation among the Institute of Gerontology, the Continuing Learning Experience group, the Social Science Research Center, the Center for Demographic Studies, and other campus centers in the application of economic analysis in study of aging; (4) to foster educational programs on the economics of aging; and (5) to advocate public discussions on economic policies and programs related to aging. Areas of investigation include health economics and aging, marketing and aging,

ageism in the work place, managing an aging workforce, financial and retirement planning, social security reform, housing for the elderly, and the high cost of dying.

The Center for the Study of Economics of Aging is self-supporting relying on volunteerism, contract and grant research, and contributions from donors. An advisory board of distinguished faculty, representing all of the colleges, and community leaders monitor the center's activities.

CENTER FOR THE STUDY OF EMERGING MARKETS

Langsdorf Hall 537
(714) 278-2375

The center was created to foster the study of emerging markets by sponsoring faculty research projects, curriculum updates, and international trade promotion especially for the high tech sector of Orange County in the bio-technical, telecommunications, information technology and electronic areas.

In addition to promoting the free flow of information for local and foreign firms, the Center for the Study of Emerging Markets maintains the largest regional database of high tech firms that are involved in or capable of trading internationally, qualified foreign buyers and sellers, and foreign and local funding sources for investment. Matching services are provided by trained, multilingual student interns supervised by seasoned professionals who can match local companies with their foreign counterparts. This may take the form of qualified leads, initial phone contacts, as well as advice on financing and logistical support. The center also maintains a website where the results of its research projects are published for the business community and students, as well as other academics. Each year the center also sponsors a number of international and local conferences on topics related to emerging markets.

CENTER FOR THE STUDY OF RELIGION IN AMERICAN LIFE

Education Classroom 622
(714) 278-2442

The Center for the Study of Religion in American Life, housed within the Department of Comparative Religion, seeks to support the work of the department and to relate that work to the areas of business, the health professions, the media, etc. It does so by sponsoring conferences, promoting research – especially in the area of interfaith relations – and preserving archival materials related to religious communities in Southern California whose numbers are diminishing. A Council of Business and Academic Advisers meets regularly to provide direction, advice, and intellectual and financial support to the center. The center's director is Dr. Benjamin J. Hubbard, chair of the Department of Comparative Religion.

CENTER FOR SUCCESSFUL AGING

Ruby Gerontology Center 17

Phone: (714) 278-2620

Fax: (714) 278-5317

The Center for Successful Aging, through its educational, research and service activities, has as its mission the promotion of health, vitality and well-being in later years. Housed in the Ruby Gerontology Center, and part of the College of Human Development and Community Service, the center uses an integrated approach to address the health concerns of an aging society.

The center has four distinct programs: Senior Fitness, Balance and Mobility, Health Promotion for Older Adults, and Outdoor Explorations. The specific goals are to: (1) conduct interdisciplinary research on issues related to healthy aging; (2) provide student and in-service training to prepare healthcare practitioners, rehabilitative specialists and fitness leaders to work with older adults; (3) offer a variety of health, physical, psychological and functional assessments; (4) conduct health, fitness and rehabilitation programs; (5) collaborate and partner with community agencies and facilities to provide services to improve the quality of life in later years; and (6) serve as an advocate for affect-

ing public policy relative to healthy aging. A multidisciplinary team of faculty throughout the university works to implement these goals in collaboration with the directors of the center, Dr. Jessie Jones and Dr. Debra Rose, professors in the Division of Kinesiology and Health Promotion.

CENTERS FOR LIFE SPAN DEVELOPMENT

The Cognitive Development Laboratory and the Developmental Research Center support instruction and research in the life-span development from infancy through adulthood. Unique opportunities are provided to students in both research training and applied psychology. The Department of Psychology is also closely affiliated with the Ruby Gerontology Center, which serves as a resource for research on topics of interest in the field of gerontology.

Cognitive Development Laboratory

Humanities 519

(714) 278-2110

The Cognitive Development Laboratory in the Department of Psychology is a research training facility for students. Recent studies have focused on the memory development, gender differences in cognition and specialization of the cerebral hemispheres for thinking.

Developmental Research Center

Humanities 519 E

(714) 278-2147

The Developmental Research Center in the Department of Psychology supports The Fullerton Longitudinal Study, a comprehensive and systematic investigation of children's development. Data were collected from more than 100 children and their families for over 18 years.

Topics of interest include the longitudinal assessment of the relation between home environment and cognitive development; school readiness; giftedness; learning disabilities; academic intrinsic motivation; family and peer relationships; temperament and personality; social and behavioral development; parental involvement, family structure, demographics and change; and hemispheric and manual laterality.

DECISION RESEARCH CENTER

Humanities 532

(714) 278-2102

The Decision Research Center in the Department of Psychology, established in 1986, supports research and instructional activities of faculty and students in the study of behavioral decision-making. Research conducted in the center includes experimental and theoretical studies of: (1) basic psychological laws of judgment and decision-making under conditions of risk, uncertainty and ambiguity; (2) effects of sudden changes in wealth on a person's attitude toward risk (such as the effects of winning the lottery on financial decisions); (3) effects of the judge's point of view on judgments and decisions, and (4) combination of information from sources of varied expertise and bias to form judgments and decisions.

FAMILY BUSINESS COUNCIL

Langsdorf Hall 626

(714) 278-4182

The Family Business Council, established in 1994 within the CSUF College of Business and Economics, is a partnership between the business community and Cal State Fullerton. Its mission is to enhance the well-being and survivability of Southern California family businesses by providing opportunities for education, interaction and information tailored to the needs and concerns of family businesses.

GIANNESCHI CENTER FOR NONPROFIT RESEARCH

Academic Programs

McCarthy Hall 111-F

(714) 278-5376

Charitable organizations are a vital part of the social fabric, ranging from symphony orchestras and hospitals to community clinics and animal shelters. Their services, impact and economic scope are substantial, yet the sector as a whole is little understood.

The Gianneschi Center for Nonprofit Research was established to serve the Orange County community and the field of nonprofit sector research as the repository for data about philanthropic, charitable and volunteer activity in this county. The center published the first formal study of Orange County's

nonprofit sector in 1996. Ongoing activities include maintaining the Orange County nonprofit database, encouraging scholarly research of the sector, involving practitioners and funders in designing future research projects and facilitating meaningful discussion of issues affecting the nonprofit sector.

INSTITUTE FOR ECONOMIC AND ENVIRONMENTAL STUDIES

Langsdorf Hall 702
(714) 278-2509

The institute issues regular economic forecasts, provides analysis-based policy advice on economic and environmental issues, and studies regional economic impacts. The institute undertakes independent studies, as well as contract research into the areas of its focus with private and public entities. It seeks funding for research and training; sponsors conferences and workshops; presents studies and reports of interest to business, government, academic and general communities. Whenever possible, the institute's activities are structured to allow the participation of graduate and undergraduate students at Cal State Fullerton.

INSTITUTE FOR MOLECULAR BIOLOGY AND NUTRITION

McCarthy Hall 282
(714) 278-3614

The Institute for Molecular Biology and Nutrition is an interdisciplinary organization comprised of faculty members from the Departments of Biological Science, and Chemistry and Biochemistry. The mission of the institute is the exploration of ideas and problems concerning cell and molecular life science by: (1) fostering communication of scientific ideas to its membership, affiliated departments, the university, and to the community at large; (2) promoting active research on cellular and molecular problems; (3) encouraging student research in affiliation with members of the institute; (4) development of courses related to the institute's mission that benefit from the unique interdisciplinary approach; and (5) fostering research and education in biotechnology.

THE CSUF INSTITUTE OF GERONTOLOGY

Ruby Gerontology Center Room 8
(714) 278-4686

The Institute of Gerontology is located within the Ruby Gerontology Center and brings together the many varied aspects of aging-related education and research at CSUF. The mission of the institute is the advancement of successful aging practices through education, research and community service. Programs and projects developed and sponsored by or affiliated with the institute, promote successful aging within the broad parameters of wellness of mind and body and through the implementation of appropriate public policies.

The institute enhances the dissemination of information pertaining to gerontology and engenders multi- and inter-disciplinary research and projects, promoting a university environment that is congenial for such research and activities in gerontology. The institute fosters the communication of ideas and information concerning gerontology, and whenever possible, the activities and programs are structured to allow the full participation of all its members.

OCEAN STUDIES INSTITUTE/ SOUTHERN CALIFORNIA MARINE INSTITUTE

McCarthy Hall 282
(714) 278-3614

The Ocean Studies Institute, which consists of seven California State University campuses (Dominguez Hills, Fullerton, Long Beach, Los Angeles, Northridge, Pomona and San Marcos), participates in training scientists and educating the general public by coordinating and facilitating marine educational and research activities.

The OSI has recently merged with the University of Southern California and Occidental College to form the Southern California Marine Institute, which is located at 820 South Seaside Avenue, Terminal Island, CA 90731; (310) 519-3172; Fax (310) 519-1054.

Through its affiliation with the Southern California Marine Institute, the OSI provides facilities for introducing students to the marine environment and for intensive participation by students pursuing professional programs. The OSI owns and operates the R/V Yellowfin (76-foot vessel), which is used by classes and research programs in biology, geology and ocean engineering. In addition to research vessels located at Terminal Island, the facility includes a 5,000-square-foot building with laboratories, classrooms and running sea water system.

REAL ESTATE AND LAND USE INSTITUTE

Langsdorf Hall 522
(714) 278-7125

The Real Estate and Land Use Institute is a branch of the California State University system's applied research and professional and public education center for real estate and urban land use. The mission of the institute is to promote and advance knowledge, objective research and education in the area of real estate and land use economics by: (1) providing a neutral and consistent source of real estate research, analysis and data to the real estate community, government agencies and educators in Orange County; (2) providing a neutral forum where professionals in the field address key real estate and land use issues; and (3) maintaining liaisons with government agencies, private industry and associated organizations with interest in public policy affecting real estate and land use.

SMALL BUSINESS INSTITUTE

Langsdorf Hall 664
(949) 644-4541

The Small Business Institute has many programs designed to guide and help smaller, fast-growing businesses. One of the most important is its program in which faculty and students offer business consulting to 50 firms a year. The students are graduating seniors or MBA candidates who work under the close direction of faculty advisers. They prepare a major report that includes recommendations for improved performance.

More than 950 Orange County firms have received this service. The institute selects outstanding reports to submit to the national case competitions. In 1996, 1997, 2000, 2001 and 2002 teams of students – competing against approximately 250 other schools – were named national winners. Many other teams won regional honors.

SOCIAL SCIENCE RESEARCH CENTER

McCarthy Hall 38

(714) 278-3185

The Social Science Research Center (SSRC), under the auspices of the College of Humanities and Social Sciences, provides research services to community organizations and research support to CSUF faculty members. The center's primary goal is to assist non-profit and tax-supported agencies and organizations to answer research questions that will lead to improved service delivery and public policy.

The SSRC conducts surveys, evaluation research, needs assessments and image studies. The center also specializes in telephone survey research, conducts mailed surveys and administers face-to-face interviews. In addition, the SSRC can assist in proposal preparation and in all phases of social research, including the development of survey and evaluation instrumentation, research design, data collection, statistical analysis, and technical report writing. Through these activities, the SSRC provides applied research and training opportunities to students and CSUF faculty members.

THE SOUTH CENTRAL COASTAL INFORMATION CENTER

McCarthy Hall 477

Hosted by and linked with the Department of Anthropology, the South Central Coastal Information Center (SCCIC) is one of twelve regional information centers in California that comprise the California Historical Resources Information System (CHRIS). CHRIS works under the direction of the California Office of Historic Preservation and the State Historic Commission. These information centers

provide historical resources information to local governments and individuals with responsibilities under the National Environmental Policy Act, National Historic Preservation Act, and California Environmental Quality Act.

Since its inception in the early 1970s, the SCCIC (formerly housed at UCLA) has been a fundamental source of archaeological information for Ventura, Los Angeles and Orange Counties. The SCCIC now maintains the most extensive historical resources information base available for south central coastal California (including approximately 7,000 records of prehistory and historic archaeological sites, more than 10,000 reports of historical resource studies, and more than 30,000 historic resources inventory records).

Information about historical resources is maintained in various forms such as 7.5' USGS Quadrangle Maps, historical resource records and reports, and computerized data. SCCIC clients are generally archaeologists, historians, architectural-historians, developers and planning agencies. For more information, see <http://anthro.fullerton.edu/scic/Default.htm>.

SPORT AND MOVEMENT INSTITUTE

Physical Education 134

(714) 278-3316

The purpose of the Sport and Movement Institute is to promote an atmosphere congenial to research, creative activity and services concerned with human movement and its related phenomena. Specifically, the organization endeavors to: (1) provide services of evaluation, consultation and advisement; (2) foster and encourage the generation and communication of ideas and information; (3) interpret and facilitate the practical application of research findings; (4) provide opportunities for individuals and community groups to participate in activities of the institute, that include clinics, workshops and seminars; (5) promote and support research and other scholarly activities on the part of the membership.

TUCKER WILDLIFE SANCTUARY

McCarthy Hall 166

(714) 649-2760 or (714) 278-2638

The Tucker Wildlife Sanctuary operates as a nonprofit California State University, Fullerton Foundation agency. Located in Modjeska Canyon in the Santa Ana Mountains, the sanctuary provides a program of continuing educational service to the community, a research center for biological field studies, a facility for teacher education in nature interpretation and conservation education, and a center for training students planning to enter into the public service field of nature interpretation.

TWIN STUDIES CENTER

Humanities 521J

(714) 278-2568

The Twin Studies Center of the Psychology Department is designed to serve two purposes: (1) conduct research projects on twins that will contribute to knowledge concerning the rearing and educating of twins and enhance our understanding of human development; and (2) provide information to the public concerning psychological and biological aspects of twinning. Dr. Nancy L. Segal is the director of the Twin Studies Center.



Student Affairs

Student Affairs



VICE PRESIDENT FOR STUDENT AFFAIRS

Langsdorf Hall 805
(714) 278-3221

STUDENT AFFAIRS

Academic Appeals
Assistant Deans for Student Affairs
Career Planning and Placement Center
Counseling and Psychological Services
Disabled Student Services
Educational Enhancement Programs
Financial Aid
Guardian Scholars Program
Honors and Scholars Support Services
Housing and Residence Life
International Education and Exchange
Student Academic Services
Student Affairs Research Center
Student Health and Counseling Center
University Learning Center
Women's Center/Adult Reentry

STUDENT LIFE

Dean of Students Office
Associated Students, CSUF, Inc.
Intercollegiate Athletics

INTRODUCTION

Classroom activity is devoted to the academic development of the learner. Student Affairs offers programs that support the academic program and simultaneously provide students with services and opportunities for personal growth. Some Student Affairs programs such as housing and financial aid emphasize their service and educationally supportive roles; others, such as counseling, accentuate their developmental aspects. The opportunities offered by Student Affairs vary from the traditional social activities to lectures and concerts funded through Associated Students, CSUF, Inc. Developmental activities include the exploration of personal and vocational life styles, and leadership and training.

Student Affairs comprises Academic Appeals, Assistant Deans for Student Affairs, Associated Students, CSUF, Inc., Career Planning and Placement Center, Counseling and Psychological Services, Dean of Students Office, Disabled Student Services, Educational Enhancement Programs, Financial Aid, Guardian Scholars Program, Honors and Scholars Support Services, Housing and Residence Life, Intercollegiate Athletics, International Education and Exchange, Student Academic Services, Student Affairs Research Center, Student Health and Counseling Center, University Learning Center, and Women's Center/Adult Re-entry.

VICE PRESIDENT FOR STUDENT AFFAIRS

Langsdorf Hall 805
(714) 278-3221

The vice president's office coordinates and supervises all Student Affairs services and programs. The vice president is responsible for the quality of student life on the campus and works with faculty, administration and students to improve the campus environment. This office is also charged with administering the university's academic appeals procedure and the student disciplinary codes.

ACADEMIC APPEALS

Langsdorf Hall 805
(714) 278-3836

Student Appeal of Grade Disputes or Charges of Academic Dishonesty

Students have the right of due process if they feel they have been treated unfairly or with prejudice. They may appeal a grade dispute or charge of academic dishonesty to the Coordinator of Academic Appeals, who will guide them through the procedure to be followed. The student must go through several steps seeking to resolve the issue before it can be considered by the Academic Appeals Board, which is composed of three faculty and two students. Contact the Office of the Vice President for Student Affairs for further information.

ASSISTANT DEANS FOR STUDENT AFFAIRS

The assistant deans work in collaboration with the vice president for Student Affairs, the deans in each college, and the Student Affairs staff at the El Toro Campus to deliver services that support student progress toward degree and professional objectives. In addition, the assistant deans design and coordinate programs with faculty, students and administration that enrich the academic environment and enhance student development within the colleges.

Responsibilities of the assistant deans may include counseling students with personal and academic concerns, coordinating orientation and retention programs, advising student groups, administering scholarship programs, and developing alumni and community support for the college.

Contact the college dean's office for information on how to reach your assistant dean for student affairs.

CAREER PLANNING & PLACEMENT CENTER

Langsdorf Hall 208
(714) 278-3121

The Career Planning and Placement Center provides career counseling and employment services. The center has designed many programs and services to fit career exploration, planning and employment needs. One of the most popular services is listing of local, part-time jobs for Cal State Fullerton students.

Whether a student is just beginning to think about a major or a career, or is ready to look for a job, the center has counselors and programs that will help define and achieve career goals. The center draws upon both on- and off-campus contacts and resources by working closely with employers and on task forces with faculty to plan career programs. Make the time to get acquainted with and use the center's services and programs.

The center's website www.fullerton.edu/career is the first place to check for up-to-date information about all of our events, activities and services. On our website, you will find the calendar of events, the logon page for Titan Connection, career information pages created by industry specialist staff, links to employer websites, links to job search sites, resume writing tips, interview preparation, job search techniques, a career planning timeline and lists of employers attending campus events.

Opportunities for employment and internships are located on Titan Connection www.fullerton.edu/career. Titan Connection provides lists of student assistant positions on campus, internships, and full- and part-time employment opportunities in the community.

Walk-in advising is the first stop for all students and alumni who visit the Career Planning and Placement Center. This is where the career decision-making process and labor market research can begin. Career counseling is available by appointment to assist students in developing career goals, determining methods of obtaining those goals and implementing a viable job search.

CHOICES CT is a computerized program that provides clear and individualized approaches to career decision-making. The program will help you examine your values

and interests, explore career options and research program information regarding graduate and professional schools.

The COMPASS Program (Career Exploration & Life Planning, CO 252) is a one-semester learning community designed for freshmen who have not yet declared a major or who are unsure about their choice of major. This course is taught by Career Planning and Placement Center professionals and can make a strong contribution to your success at Cal State Fullerton.

Each fall the Career Planning and Placement Center sponsors a Graduate and Professional School Fair that is attended by representatives from approximately 100 schools. Representatives come to campus to share information about their programs and to recruit Cal State Fullerton students.

Teacher Job Fairs are held once a semester and offer student teachers and other teacher candidates the opportunity to meet and interview with California school district representatives.

The Internship & Job Fair event, which is held each fall and spring semester, offers excellent opportunities for students to meet with employers to apply for positions and to explore career and professional options. Students can meet with representatives from a variety of business, non-profit and government organizations to ask questions and collect career-related information.

Workshops and seminars are scheduled each semester. The workshops may include the following topics: career planning, resume writing, interview skills, job search techniques, business etiquette, Internet job searches, job search techniques for international students, and other college-to-work topics. A list of dates, times and locations are announced on our website: www.fullerton.edu/career.

The Campus Interview Program brings employers to campus each semester to conduct interviews for current professional job openings. This program provides graduating seniors, graduate students and alumni with opportunities to interview with these employers.

The Career Resource Library contains an extensive collection of job search, occupational and labor market information and references to help students with their educational and career search. A checkout system has been instituted which enables students to borrow materials overnight or over the weekend.

The staff of the Career Planning and Placement Center is responsive to the needs of students, alumni and employers. Services are available without cost to currently enrolled undergraduate and graduate students, as well as alumni who are within one year past their graduation date.

COUNSELING AND PSYCHOLOGICAL SERVICES

Student Health and Counseling Center - East Building
(714) 278-3040

The Counseling and Psychological Services staff is dedicated to providing high quality and effective psychological counseling and brief psychotherapy to registered students who are facing problems in their lives, their studies and their relationships. The ultimate objective of CAPS is to contribute in a significant way to student learning and to the development of CSUF students as effective, mature and responsible adults.

CAPS staff members are trained mental health professionals who are licensed psychologists and marriage, family and child therapists; doctoral-level psychological counselors; and supervised graduate interns. Any student who is currently enrolled at CSUF is eligible for counseling services; couples may also be seen as long as one member of the couple is a student at CSUF.

DISABLED STUDENT SERVICES

University Hall 101
(714) 278-3117 (V) 278-2786 (TDD)

The Office of Disabled Student Services provides assistance and offers support services to students with temporary and permanent disabilities. The purpose of this program is to make all of the university's educational, cultural, social, and physical facilities and programs accessible to students with orthopedic, functional, perceptual and/or learning disabilities. The program serves as the delegated authority on campus to review documentation and prescribe specific accommodations for students with disabilities. The professional and support staff are experienced in serving the particular needs of persons with disabilities.

The program works in close cooperation with other university departments in order to provide a full range of services. These services include academic accommodations (readers, note takers, tutors, interpreters/RTC for the

deaf/hard of hearing, alternative testing), counseling, disabled person parking, application assistance and priority registration, academic advisement, career counseling and job-placement, housing and transportation, referral and advocacy.

The program also provides diagnostic assessment, counseling, advisement, advocacy and supportive services for students with psychological and other functional and/or learning disabilities.

The program encourages involvement and input from students, faculty and staff in order to maintain a responsive and quality program.

Information regarding programs and services available to students with permanent and temporary disabilities may be obtained from the Office of Disabled Student Services.

EDUCATIONAL ENHANCEMENT PROGRAMS

Educational Enhancement Programs, funded by the Department of Education, were instituted to assist disadvantaged students in reaching their educational goals. These programs target low income and first-generation secondary students, college students and adults, and provide them with educational services to ensure that they graduate and then continue their education at the next level. The objectives of these programs are to increase educational opportunity, raise academic performance, and improve retention and motivation for student success.

GEAR UP - Anaheim University Hall 234 (714) 278-5117

The GEAR UP Program ensures that disadvantaged middle school and secondary students are prepared for, pursue and succeed in postsecondary education. GEAR UP was established to provide students with a comprehensive set of services and activities to assist them in achieving educational success.

Ronald E. McNair Scholars Program University Hall 179 (714) 278-7315

The Ronald E. McNair Scholars program is designed to prepare economically disadvantaged and traditionally underrepresented students for doctoral studies. The program provides opportunities for students to define goals, engage in research, and develop the skills and student/faculty mentor relationships critical to success at the doctoral level.

Upward Bound Math Science University Hall 215 (714) 278-3634

The Upward Bound Math Science Program is designed to assist eligible high school students with preparation for a post-secondary education. These students are low-income, first-generation postsecondary students, grades 9-12 from the following high schools: Anaheim, Buena Park, Santiago and Savanna. Participants are encouraged to develop their potential to excel in math and science and to pursue post-secondary degrees in these fields.

The program focuses on academic achievement, career development, personal and financial aid assistance, and exposure to the various opportunities available to students on college campuses. Program participants participate in tutoring, Saturday Academy sessions, a six-week summer residential program, and a bridge component for graduating seniors.

Upward Bound North University Hall 215 (714) 278- 4311

Upward Bound South University Hall 215 (714) 278-3254

Upward Bound North and Upward Bound South are federally funded, comprehensive educational programs designed to assist low-income and first-generation students to acquire the skills and motivation necessary to complete a program of secondary education and to provide preparation to enter and succeed in a program of post-secondary education.

CSUF Upward Bound participants are selected from various high schools that have demonstrated a need for the services offered by the program. All students participate in year-round academic activities, including summer residential living.

Upward Bound North provides services to John Glen High School, La Serna High School, Norwalk High School and Pioneer High School.

Upward Bound South provides services to Century High School, Saddleback High School, Santa Ana High School and Valley High School.

FINANCIAL AID

University Hall 146 (714) 278-3125

The Office of Financial Aid is committed to providing eligible students with the necessary financial aid resources to ensure their academic success. The office provides financial assistance to more than 12,500 students annually and administers over \$80 million each year through the following student financial assistance programs:

- Parent Loan (PLUS) Program
- Federal Perkins Loan
- Federal Stafford Loan
- Federal Pell Grant
- Federal Supplemental Educational Opportunity Grant
- Bureau of Indian Affairs Grant
- State University Grant Program
- State Educational Opportunity Program Grant
- Federal Work Study Program
- Cal Grant A
- Cal Grant B
- Private Scholarship
- Emergency Loan Fund

For further information concerning financial aid programs available at the university, see the Registration Procedures section of this catalog, or call the Office of Financial Aid at (714) 278-3125.

GUARDIAN SCHOLARS PROGRAM

Commons 120 (714) 278- 4900

The Guardian Scholars program was created to acknowledge the accomplishments of students who have left the foster care system, and were wards of the court. These students, who have overcome substantial obstacles in pursuit of their education, are rewarded with a generous scholarship that covers their educational expenses including fees, housing and books.

More than just a scholarship, this program provides advising and mentoring to help ensure that these students will achieve their academic potential.

HONORS AND SCHOLARS

SUPPORT SERVICES

Pollak Library North 120
(714) 278-7440

Honors and Scholars Support Services offers a unique, comprehensive program to challenge and motivate outstanding students throughout their university experiences. Support is provided in areas of outreach and recruitment, orientation, program management, and the coordination of honors societies functions and special university events. The program offers special seminars, high interaction with outstanding faculty members, and the opportunity for students to enhance their leadership abilities.

The center provides advice, support and encouragement for students seeking fellowships and awards. Emphasis is placed in providing guidance and advice on applying to graduate and professional schools, as well as assistance in completing the application processes for prestigious scholarships and awards such as Fulbright, Truman and Rhodes.

HOUSING AND RESIDENCE LIFE

Cobb Residence Halls-Housing Office
(714) 278-2168

Cal State Fullerton's on-campus housing accommodates approximately 800 students. The residence hall complex consists of three-bedroom double occupancy and four-bedroom single occupancy, apartment-style suites and a community center. The three-bedroom double occupancy suites are designed to accommodate six students while the four-bedroom single occupancy suites accommodate four students. Several suites have special facilities for disabled students.

Each suite is equipped with a stove, refrigerator, dishwasher and microwave oven. Priority for single occupancy spaces is given to those individuals with at least one semester of university on-campus housing experience and to those students with junior class standing or above.

The community center offers recreational and academic services, as well as a lounge, game room and a coin-operated laundry facility. Barbecue grills, basketball and volleyball courts are also available for leisure and recreational activities.

The Housing and Residence Life Office also assists students in their search for off-campus housing by providing updated

listings of local apartment complexes. Bulletin boards are available for posting cards by students seeking roommates or accommodations. Other listings highlight rooms for rent in private homes and rooms in exchange for work. Information is available on referrals for community housing agencies handling landlord/tenant law.

Residence hall space is available for summer session students and for educationally related groups sponsoring workshops and programs on campus. Contact the campus Housing and Residence Life Office for further information.

INTERNATIONAL EDUCATION AND EXCHANGE

University Hall 244
(714) 278-2787

California State University, Fullerton is a community of people from many nations and cultures. The Office of International Education and Exchange is dedicated to promoting the exchange of knowledge and experience within the multicultural campus community and with the world at large. The office provides information and assistance for all international students attending CSUF and for U.S. students planning to study abroad.

International Students

More than 1,500 students from nearly 90 countries study at CSUF as international students, and the staff of the Office of International Education and Exchange endeavors to provide them with the best possible academic and personal experience. The office provides visa eligibility documents, pre-arrival information, and orientation to newly admitted students. The door is always open for students to meet with an adviser to discuss academic concerns, cultural adjustment, immigration matters or just to chat.

Campus activities such as cultural events and holiday celebrations occur throughout the year. The office coordinates programs in the community such as the Fullerton International Friendship Council, which offers home visits with local families.

Study, Work and Travel Abroad

A year or semester overseas can provide an invaluable educational experience. Cultural awareness, language skills and an in-depth knowledge of one's field from an international perspective are but a few of the many benefits of studying abroad. A well planned program offers career advantages with the increasingly multinational and multicultural organizations and communities of Southern California.

The California State University International Programs is an academic year program with centers in 18 countries. International Programs participants remain enrolled at CSUF, earn residential credit, and pay an International Programs participant fee and home campus fees. All personal expenses are the student's responsibility.

CSUF has established campus-based direct exchange programs with universities in many other overseas sites including China, France, Germany, Japan and Mexico. Application and admission requirements vary somewhat by country. No overseas tuition is charged; students pay regular CSUF campus fees, plus international transportation, living and related expenses. Semester programs are available.

Detailed information on both the CSU International Programs and exchange programs may be found in the "International Programs" section of this catalog.

Information on International Programs, as well as a general library on study, work and travel abroad is available in the International Education Office.

Intercultural Development Center

The Intercultural Development Center offers educational support programs and services for foreign-born students, particularly recent immigrants and refugees from Southeast Asia. Students are offered programs such as employment skills workshops, peer support groups, and traditional cultural celebrations. The center also provides information on service-learning and volunteer opportunities with community agencies serving recent immigrant populations in Orange County.

The Intercultural Development Center builds cross-cultural awareness in the campus community by serving as a resource center with published materials and presentations on diverse cultures. The center is well equipped

to assist immigrant and refugee students with academic and personal problems.

STUDENT ACADEMIC SERVICES

University Hall 138

(714) 278-2484

The mission of Student Academic Services is to create an environment where all students have the opportunity to succeed. The services and activities the department administers to achieve its mission are all centered around student retention and graduation. Student Academic Services is committed to serving a diverse population and providing students with a rich educational experience.

The department coordinates the services of a number of student programs. These programs give particular attention to the educational needs of low income and disadvantaged college students to ensure that they have services available to them to successfully complete their college education.

The following programs are administered by Student Academic Services.

Educational Opportunity Program

University Hall 231

(714) 278-2784

The Educational Opportunity Program (EOP) is charged with improving the access and retention of low-income and educationally disadvantaged students. EOP students have the potential to perform satisfactorily at CSUF, but may be unable to realize this potential due to educational or economic barriers.

EOP provides admission and financial aid information to help students complete the admissions process. In addition, EOP students can make use of academic services such as tutoring, orientation sessions, basic skills workshops and counseling.

Intensive Learning Experience (ILE)

McCarthy Hall 26

(714) 278-7236

Intensive Learning Experience (ILE) serves students who score in the lowest quartile on the English Placement Test and/or the Entry Level Mathematics Examination. ILE strives to increase the retention of students by ensuring their timely enrollment in appropriate developmental math and English courses. The program also makes referrals to other services in Student Academic Services such as counseling and skills workshops.

MESA Engineering Program

Computer Science 201

(714) 278-3879

The MESA Engineering Program is an academic support program designed to recruit, retain and graduate students. MESA serves educationally disadvantaged students and emphasizes participation by students from groups with low eligibility rates for four-year colleges.

The program offers students assistance in the following areas: admission and matriculation, orientation courses, study center, tutoring, academic counseling, student organizations, and scholarships and incentive grants.

Student Diversity Program

University Hall 183

(714) 278-5897

The Student Diversity Program addresses the low retention and graduation rates of student athletes and other at-risk students by improving their use of campus academic support services and by enhancing their academic development and achievement through additional support services tailored to meet their individual needs.

The Student Diversity Program supports a network program for the at-risk student population. The program first provides guidance and retention services to diverse student populations by developing and implementing action plans and programs to address academic, social and cultural needs. Second, the Student Diversity Program maintains a complex early assessment and reporting system to enhance student academic and social interaction.

Student Retention Services

University Hall 143

(714) 278-2288

Student Retention Services provides a variety of educational support activities to students. Services include: academic advising, personal counseling referrals, basic skills workshops, individual and/or small group tutoring, career exploration workshops and orientation courses.

An essential mission of the office is to increase retention. All retention services are delivered to first- and second-year EOP students and to other students, such as those on academic probation or in jeopardy of disqualification.

Student Support Services

University Hall 179

(714) 278-5210

The Student Support Services program offers numerous services for college students to improve their academic performance. Through services such as instructional support, tutoring and mentoring, the program gives students the educational tools necessary to be successful at Cal State Fullerton.

Summer Bridge

University Hall 143

(714) 278-2784

This six-week residential program during the summer allows new students to become accustomed to living and working on campus. Instructional support is provided in English and reading. In addition, specialized workshops are offered to help improve listening and communication skills. The program provides a good opportunity for new students to establish a strong network of friends, faculty and staff members whom the student can rely on for help during the academic year.

Testing Services

University Hall 229

(714) 278-3838

The Testing Services office provides a variety of testing opportunities to the university. The office supports the counseling services available through the Career Planning and Placement Center by administering a variety of vocational tests designed to help students gain a better understanding of themselves and of their goals and interests. These tests are administered on an individual basis in response to counselor referrals.

National group testing programs related to undergraduate and graduate school admissions and teacher certification are also coordinated by the center. Information on the following is available in the center:

American College Test (ACT)

Scholastic Assessment Tests (SAT)

Graduate Record Examination (GRE)

Graduate Management Admission Test (GMAT)

Law School Admission Test (LSAT)

Medical College Admission Test (MCAT)

Professional Assessments for Beginning Teachers (PRAXIS)

California Basic Educational Skills Test (CBEST)

Test of English as a Foreign Language (TOEFL)

The center also administers other group tests related to CSUF degree requirements. Information on the following is available in the center:

English Placement Test (EPT)

Entry Level Mathematics (ELM)

Examination in Writing Proficiency (EWP)

Accounting Qualifying Examination (AQE)

Mathematics Qualifying Examination (MQE)

STUDENT AFFAIRS RESEARCH CENTER

Langsdorf Hall 206
(714) 278- 4865

The Student Affairs Research Center provides leadership in the performance of quality research about students. The center is a resource for information about students and performs and supports secondary and primary research of all forms. Research projects include survey research, such as the annual campus climate assessment; qualitative research including focus groups and secondary data analysis, such as records review and database analyses. The center provides consultation to all researchers on issues concerning survey research, instrument selection and project development.

STUDENT HEALTH AND COUNSELING CENTER

Student Health and Counseling Center - West Building
(714) 278-2800

Basic medical care at the Student Health and Counseling Center is available to all registered students. Physicians, nurse practitioners and registered nurses staff the center, which has its own laboratory, X-ray and pharmacy. Specialty services include orthopedics, podiatry, physical therapy and optometry.

Our competent medical staff offers a wide range of care to help you stay well and get better quickly should you become ill or injured. All medical records are confidential and protected against unauthorized release by state and federal law.

The basic medical services are supported jointly by the state budget and a student mandatory health fee. Certain augmented services are available at a low fee. An optional

Titan Health Card is available to cover unlimited use of augmented services at a reduced fee and can be purchased at the Student Health and Counseling Center. Stop by or call (714) 278-2813 to schedule an appointment.

UNIVERSITY LEARNING CENTER

McCarthy Hall 33
(714) 278-2738

The Learning Center supports the following university goals: 1) establish an environment where learning and the creation of knowledge are central to everything we do; 2) assess student learning collegially, and continually use the evidence to improve programs; 3) integrate advances in information technologies into learning environments; 4) create opportunities in and out of the classroom for collaborative activities for students, faculty and staff; 5) ensure that students of varying age, ethnicity, culture, academic experience and economic circumstances are well served; 6) facilitate a timely graduation through class availability and effective retention measures.

To accomplish these goals, the Learning Center provides a wide variety of services to students; promotes collaborative efforts among students, faculty and staff; and supports the academic enterprise, ensuring that every student will have the opportunity to succeed. In addition, the center provides a safe, user-friendly interactive environment that encourages the creation of many communities of learners.

In the center, collaborative learning groups provide support for general education and major classes, which involves small-group study led by a student who attends the class with the group and works closely with the professor. Study skills, such as time management, test-taking strategies, and note taking are included as part of the group's activities. In addition, the center houses a computer-learning lab that provides access to the Internet. Both MacIntosh and PC terminals are available for student use.

WOMEN'S CENTER/ADULT REENTRY

University Hall 205
(714) 278-3928

The Women's Center's primary objective is to foster a greater awareness of women's issues. Its goal is to promote gender equity through improved communication between women and men. It is open to all interested students. The center's hours are from 8 a.m. to 5 p.m. Monday through Friday. Evening appointments are always available.

The Women's Center is a place for all students – women and men. It is an excellent place for students to receive support, information and resources to help them explore issues of gender equity, as well as contemporary gender issues.

Programs and services include individual counseling, speakers, skill-building workshops, developmental groups, resource information, and referrals. Cultural diversity and what that means for women of color is of special concern to the Women's Center. African-American women, Asian women, and Latinas will find groups and books specific to the concerns of each of these populations. The Women of Color Resource Center, part of the Women's Center, provides excellent internship opportunities for students.

The Women's Center has developed a community education program focused on decreasing violence against women. The program focuses on training and internships for students who seek to work in the area of domestic violence prevention. Education on the sociology and prevention of date rape, stalking, sexual harassment and sexual assault are also available.

The Women's Center is closely involved with the bachelor's degree in Women's Studies. The center is dedicated to supporting the growth and awareness of individuals who choose the women's studies major or minor. Some Women's studies classes are also taught in the Women's Center.

The Adult Reentry Center serves adults who, after a break in their education, are considering beginning or continuing their college education. The center provides support and guidance for currently enrolled reentry students and others whose needs differ from those of the traditional university student. The center also provides information and assistance with university application and registration procedures, as well as personal, academic and career counseling. Special programs, groups, workshops, films, and discussions that focus on the special needs of reentry students are presented each semester. Evening hours are always available.

Student Life



DEAN OF STUDENTS OFFICE

Titan Student Union 235
(714) 278-3211

ASSOCIATED STUDENTS, CSUF, INC. OFFICE

Titan Student Union 207
(714) 278-3295

INTRODUCTION

Student Life provides educational opportunities outside of the classroom at California State University, Fullerton. Students can take full advantage of the many activities, programs and seminars offered as part of a well-developed co-curriculum on campus. Students not only attend events but also participate in the planning and implementation of a full slate of activities held throughout the year.

DEAN OF STUDENTS OFFICE

The students, staff and programs that comprise the Dean of Students Office offer developmental experiences for students desiring to learn and practice leadership skills. Society looks to universities to provide the next generation of leaders, but frequently little is done to give students preparation for this role. In the Dean of Students Office, opportunities range from a more structured learning environment, such as the Student Leadership Institute, to participating as an officer in a student club or volunteering in surrounding communities with the Volunteer and Service Center. Retreats and workshops are held to help students acquire the expertise they will need now and in the future.

The Dean of Students Office provides information and assistance in registering a club or organization. In addition, one can get information about the 210 student clubs and organizations currently registered at CSUF. The Dean of Students Office is responsible for scheduling club meeting space in all campus buildings (except the Titan Student Union), as well as for scheduling reservation space for outdoor activities. The professional staff is available to help plan, implement and evaluate any type of program or project. The staff can also assist in budget development, publicity, fundraisers and conferences. The professional staff conducts workshops throughout the semester and covers such topics as successful event program planning and group dynamics. The Dean of Students Office staff advises all student groups wishing to sponsor campus-wide cultural programs.

JUDICIAL AFFAIRS

Titan Student Union 235
(714) 278-3211

Students are expected to conduct themselves as mature members of the campus community. The Judicial Affairs officer conducts educational workshops that promote and educate students about campus expectations. This office is responsible for coordination of the established judicial procedures if accepted university standards have been compromised and is also a contact point for academic appeals. Additional information on Academic Appeals can be found in the Student Affairs section of this catalog.

LEADERSHIP AND MULTICULTURAL DEVELOPMENT PROGRAMS

Greek Life

Titan Student Union 235
(714) 278-3211

Greek letter fraternities and sororities with national affiliations are active at Cal State Fullerton. With a choice of eight fraternities and six sororities, students can find a group to join that will match their involvement goals. Additionally, there are Asian, Latino and African-American-focused fraternities and sororities in which students can also participate. Recruitment information is available at the Dean of Students Office.

Multicultural Leadership Center

Titan Student Union 234

(714) 278-7633

The Multicultural Leadership Center seeks to create learning environments that enhance the multicultural experience on campus.

The center provides three primary services: multicultural resources, including a library and calendar of events; multicultural programs, including cultural and ethnic student organization advisement, special event coordination, and cultural graduation recognition ceremonies coordination; and leadership and diversity training for all students.

Student Leadership Institute

Titan Student Union 235

(714) 278-5999

The Student Leadership Institute is a nationally recognized program that offers non-credit workshops for CSUF students on leadership development topics. The program is for all students who are interested in improving their leadership skills and in getting involved on campus. The Student Leadership Institute offers five certificate programs: University Leadership, Peer Education, E.M.B.R.A.C.E. (Educating Myself for Better Racial Awareness and Cultural Enrichment), Public Service and Non-Profit Leadership, and Career Leadership.

NEW STUDENT PROGRAMS

Student Information and Referral Center University Hall 178

(714) 278-2501

The Student Information and Referral Center (SIRC) is a place where new and continuing students can get questions answered and learn about services and programs on campus designed for student success at Cal State Fullerton. SIRC provides general campus information, campus involvement information, on-campus student organization information and highlights evening programs and services. In addition, SIRC is the home of New Student Programs, which assists new students in making a successful transition to the university. SIRC is open Monday through Thursday 8 a.m. to 7:30 p.m. and Fridays 8 a.m. to 5 p.m.

New Student Orientation

New Student Orientation provides new freshman and transfer students and their family members with an introduction to the opportunities for learning at CSUF both in and out of the classroom. A strong emphasis is placed on general education and getting registered for classes in the first semester.

The programs also provide a place to meet people, get an overview of the campus and discover the traditions of CSUF.

Titan Week of Welcome (WOW)

Titan Week of Welcome is an opportunity to join with others in the CSUF community to welcome new students and kick off the new academic year. Titan Week of Welcome is held during the first weeks of the fall and spring semesters. Events and programs offered during WOW range from academic open houses to the popular Discoverfest, an activities and involvement fair held in the Quad.

New Student Information Center

Langsdorf Hall 112

(714) 278-3120

The New Student Information Center offers new and continuing students general information about campus events and services, directions and campus hours. Students and visitors are able to pick up applications for admissions, information about on-and-off-campus housing, student handbooks and general information about the various services on campus.

Campus Tours

Call the New Student Information Center to schedule a tour of the campus. Tours are offered daily: Monday, Wednesday and Friday at 10 a.m. and Tuesday, Thursday and Friday at 3 p.m. Group tours for 15 or more people should be scheduled a minimum of two weeks in advance of desired tour date and time. Tours last 60 to 90 minutes.

Freshman Programs

Staff members in New Student Programs work closely with Academic Affairs in producing a variety of freshman programs such as Fullerton First Year, Live 'n' Learn, Compass and more, all designed to assist first-year students in making the transition to college as productively as possible.

Ask the Titans

Ask the Titans is a Web-based information service designed to answer any question a student may have. Log on to www.fullerton.edu/deanofstudents/ask, and fill out the question form. Your question will be answered within 48 hours.

STUDENT LIFE

America Reads and Counts

Titan Student Union 247

(714) 278-4665

America Reads and Counts is a nationwide work-study program for college students designed to educate children in mathematics and reading. CSUF students tutor and mentor K-6th grade students in traditional, year-round and after school programs. All CSUF students who are work-study approved are eligible to serve as America Reads and Counts staff members.

Student Organization Resource Center

Titan Student Union 247

(714) 278-7622

Students who want to meet and get to know others who are interested in similar types of co-curricular activities can join one of the 210 active student clubs and organizations on campus. The Student Organization Resource Center provides information about club meeting times, dates and locations. Categories of clubs include academic, honor, cultural, professional, religious and recreational. Academic and professional organizations are either closely affiliated with academic areas at Cal State Fullerton and/or have national professional affiliation. These groups offer students a chance to network with faculty and community members who have similar career interests. The Student Organization Resource Center also provides programs and services to student leaders responsible for coordinating student organizations. Services include organization registration, mailboxes, room reservations and event planning advice and resources.

Volunteer and Service Center Titan Student Union 2

(714) 278-7623

The Volunteer and Service Center connects students with volunteer opportunities. The center provides quality service to the surrounding community while broadening the knowledge and experience of the servers as responsible and active members in a democratic society. The Volunteer and Service Center provides a wide range of community service projects that are student-run and dedicated to issues such as tutoring and mentoring, college prep and hunger and homelessness. Additionally, students can use the center to identify service-learning courses. Community service programs provide a variety of experiences, including volunteer work, internships, academic credit projects, and some compensated experiences. The center will help place students in both on-campus and off-campus agencies.

ASSOCIATED STUDENTS, CSUF, INC.

Titan Student Union 207

(714) 278-3295

Associated Students, CSUF, Inc. (ASI) is a campus involvement connection at California State University, Fullerton. ASI offers a variety of learning experiences through its government, programs and services. Many campus special events are the product of student efforts to bring students new educational opportunities, teach them about the campus, and provide a friendly, social atmosphere at CSUF.

ASI is a non-profit corporation supported by the activity fee students pay through registration each semester. By paying this fee, students are automatically a member of ASI. The purpose of the corporation is to provide academic and co-curricular programs and services for students. When students are involved in ASI, they are a part of an energetic, productive group learning valuable organization and communication skills that can augment their personal and professional growth. Find out more at www.asi.fullerton.edu.

ASI Government

The ASI government controls the actions of the corporation; it is a powerful, active organization that has a need for students with all types of talents and skills. To apply for a position or find out more about student government, visit the ASI government office in the Titan Student Union.

ASI President and Executive Vice President

The ASI president and executive vice president are chosen through student elections each spring and manage the corporation, its employees and volunteers. These officers represent students' needs and interests to CSUF's faculty and administration, and to the surrounding community, and participate in several university committees. Along with the executive staff, the president and executive vice president submit recommendations to the ASI Board of Directors on the corporation's annual budget of more than \$4.3 million.

ASI Executive Staff

The executive staff works with the president and executive vice president to direct the programs and operation of the corporation. All executive staff members are appointed by the ASI president. Students may apply for these positions in the ASI government office.

The ASI vice president for finance coordinates the budget process. The director for administration recruits students for presidential appointments and implements special projects. The director of statewide affairs is the CSUF representative to the California State Student Association. This statewide organization influences decisions about education, fee schedules and related topics. The public relations director is responsible for marketing the corporation and communicating with the campus community. Student volunteers are assigned specific duties according to the needs of the corporation.

ASI Board of Directors

The ASI Board of Directors is composed of two representatives from each college who are elected to serve one-year terms. The ASI president, executive vice president, executive staff members, executive director, one faculty council representative, and one appointee of the university president also sit on the board. Directors also sit on various board subcommittees and other university committees.

These directors represent the student body and work with the executive staff to implement programs that fulfill students' academic and co-curricular needs. They deal with issues regarding the business and affairs of the corporation, including approving budgets and appointments, authorizing business contracts, and issuing policy statements for administrative purposes.

The weekly meetings of the ASI Board of Directors are held in the Legislative Chambers in the Titan Student Union. All students are welcome to attend. Board seats are open to all qualifying students. Election applications are available at the midpoint of each semester in the ASI government office in the Titan Student Union.

Associated Students, Inc. Productions (ASP)

Titan Student Union 268

(714) 278-3501

ASP provides the university community with a variety of entertainment events through its major weekly series: Wednesday Noontime Concerts in Becker Amphitheater, Pub Shows in the Titan Student Union's Underground and Thursday Night at the Movies at Titan Theater in the Titan Student Union. Musical acts in the Amphitheater and the Pub encompass a range of genres including rock, ska, jazz, pop, Latin/salsa and country. Films shown include both recent releases, as well as classics. Additionally, ASP Union and Special Programming programs a variety of smaller eclectic acts and larger participatory events on campus. The series are normally free to all Cal State Fullerton community members. Occasionally, larger speakers or bands do require a nominal cover charge. If you are interested in finding out more about ASP or becoming a part of the ASP staff, please contact the administrative director at (714) 278-3501.

Association for Intercultural Awareness

(AICA)

Titan Student Union 261

(714) 278-2914

AICA exists to enhance the university experience of Cal State Fullerton students by raising the awareness of and by celebrating the multicultural student population of Cal State Fullerton. Member organizations desire to promote understanding, tolerance and celebration of these many cultures. As a funding council of Associated Students, CSUF, Inc., AICA is responsible for the channeling of ASI funds to member organizations to provide the campus with multicultural programming. As a programming body, AICA sponsors monthly Intercultural Symposia and the yearly AICA week to increase dialogue and discussion about cultural issues on campus. For more information about AICA or to inquire about membership, please contact the chair at (714) 278-2914.

Camp Titan

Titan Student Union 259
(714) 278-3036

Founded in 1969 as the philanthropy of Cal State Fullerton students, Camp Titan provides 150 underprivileged Orange County children with a free summer camp experience each June. The tradition continues with 50 Cal State Fullerton students volunteering over 220 hours of their time to make the camp possible by serving as program staff and counselors. The goal of the camp is to teach children to raise self-esteem, heighten social skills and confidence, build a respect for nature and develop new friendships. The camp is sponsored and managed by Associated Students, CSUF, Inc. For more information or to become part of Camp Titan, please contact the camp director at (714) 278-3036.

InterClub Councils

Titan Student Union 269
(714) 278-7736

The InterClub Councils serve as a funding council for student organizations connected to academic programs and majors. InterClub Councils are responsible for the channeling of ASI funds to member organizations to provide the campus with a variety of co-curricular activities including speakers, symposia, publications and the like. For more information, contact the assistant dean of the respective college.

Children's Center

Buildings 200 and 400
(714) 278-2961

The Children's Center is sponsored and funded by Associated Students, CSUF, Inc. For a nominal fee, children aged 3 months through 5 years whose parents are CSUF students, staff or faculty members can benefit from the services of the center. Trained preschool teachers offer a comprehensive curriculum that covers learning skills in several areas of education.

Legal Information and Referral

Annex Office on Campus,
Titan Student Union 258
(714) 278-5757 or (714) 870-5757

Associated Students, CSUF, Inc. contracts with the College Legal Clinic, a Fullerton-based corporation, to provide information on legal procedures and initial consultation on all types of legal matters. If desired, students are referred to Orange County attorneys for reduced fee services. A 24-hour hot line is maintained by the College Legal Clinic.

Titan Student Union

The Titan Student Union is located on the northwest corner of campus and provides areas for club and organizational meetings, recreation, relaxation, food service and study. Each semester a portion of student fees helps support the services available.

Titan Student Union Governing Board

The Titan Student Union Governing Board establishes operating policies for the Titan Student Union. Board members include students, faculty, an alumni representative, administrative representatives and an appointee of the university president. Additionally, the board also evaluates the programs and services of the Titan Student Union, as well as space allocation and budgetary matters.

Board members are involved in several committees. Among them are: the Food Services Committee, Policy Committee, Space Allocation Committee, Art Acquisition Committee, and the Long-Term Planning Committee. Any student may apply for a board position.

Information and Services

TSU Information and Services has the answer to most questions about CSUF. It's the place to purchase OCTA bus passes and ticket books; tickets for area theme parks, campus events and local movie theaters; receive vending machine refunds; retrieve lost belongings from "lost and found"; and obtain general campus information.

University Conference Center

This office provides meeting/event facilities and related services in the Titan Student Union for student groups, faculty/staff groups, and for the surrounding community. While specific room rental rates vary, some facilities are frequently available at no charge to CSUF-chartered student organizations.

Amphitheatre

The Becker Amphitheatre was built by Associated Students, CSUF, Inc. in conjunction with the Titan Student Union. The amphitheatre, located just southeast of the Titan Student Union, is used for noontime concerts, theatre productions and other live entertainment.

Center Gallery

The Center Gallery offers displays of student, graduate and faculty artwork. Exhibits usually feature the work of a single artist and are shown for three weeks. All exhibits are chosen by a student art gallery coordinator.

Graphic Services and Photo Lab

Titan Student Union Graphic Services develops quality flyers, brochures, logos, letterheads and posters. Services include illustration, layout design, paste-up and desktop publishing. This area also offers a complete black and white photo lab.

Mainframe Computer Lounge

Aside from the study lounges, this is one of the most popular services offered by the Titan Student Union. Here, students can use personal computers to give their assignments that professional look.

The area also features soft chairs, bright lights for reading, and a counter full of magazines. The Mainframe has a wide selection of the latest music CDs including rock, alternative, jazz, classical and country-western music. Headsets are available for personal listening.

Round Table Pizza Pub, Food Court, Garden Cafe

The Pub's congenial atmosphere offers a place to relax and sells soft drinks, beer and wine, and Round Table Pizza. Major sporting events are shown on the Pub's televisions and music is played continuously. The Pub is located on the Titan Student Union's lower level.

The Food Court is located on the main level of the Titan Student Union and features a variety of food offerings including national and regional chains, such as Togo's and Krispy Kreme Doughnuts. Visitors also enjoy fast, healthy and diverse food selections from Mexican to Asian, and sandwiches to grill selections.

The Garden Cafe is located on the lower plaza of the Titan Student Union and offers a unique cafe menu in a pleasant outdoor garden setting.

Games and Recreation

It's mostly fun 'n' games on the lower level of the Titan Student Union. The recreation area offers a place for diversions that include a lounge with a large screen television, a billiard room, video and pinball games, locker rentals, small table games and the Titan Bowl. The CSUF community is invited to participate in the various bowling leagues and tournaments sponsored each semester.

Titan Theatre and Pavilion

The Titan Theatre and Pavilion are available to clubs and organizations for meetings, conference lectures, and other presentations. It can be reserved through the University Conference Center office.

Rec Sports

Physical Education 121 (714) 278-3978

Believing that recreation and leisure pursuits are an integral part of one's total educational experience and achievement, Rec Sports, a program of the Titan Student Union, strives to provide all students with an opportunity to use their leisure time wisely in order to attain the highest degree of physical reward and mental relaxation.

The benefits of the recreation program are numerous, and it has been proven time and again, that those who maintain good health and physical fitness, perform better in all aspects of life. These programs are free to all students.

Fitness Facilities

A program of unstructured recreational activities is available to all CSUF students. By presenting a valid photo ID card, students can participate in the supervised use of numerous facilities including the racquetball and tennis courts, swimming complex, gymnasium and fitness lab. These facilities are open seven days a week.

Intramural Sports

The Intramural Sports Program is a student-funded recreational-based program of competitive leagues and tournaments. The program is accessible to all CSUF students, faculty and staff. Students have an active participative voice in all operations of the program through student assistants, as well as the intramural representatives who sit on the Intramural Sports Council. Activities such as flag football, ultimate frisbee, bowling, basketball, softball, and volleyball are scheduled at various times and days to accommodate individual schedules.

Sports Clubs

The Sports Clubs program at Cal State Fullerton is designed for individuals and organizations with similar athletic and/or recreational interests who wish to compete against other teams outside the university. They meet on a regular basis to teach and develop skills, and to promote the sport or activity. While competing in leagues and tournaments with other colleges, universities and local clubs, they are representatives of California State University, Fullerton. All competitions are on a non-varsity (Non-NCAA) level. Typical clubs include rugby, bowling, and surfing.

Student Family Memberships

Current CSUF students who are married may purchase a recreation membership for their spouse and children (21 years and younger, living at home). Unmarried students living at home may purchase a recreation membership for their parents and siblings (21 years and younger, living at home).

Intercollegiate Athletics

CONFERENCE MEMBERSHIPS

National Collegiate Athletic Association (NCAA) Division I

Big West Conference

The rise of academic prestige at California State University, Fullerton has grown alongside the development of one of the nation's impressive young athletics departments. The intercollegiate athletics department provides student-athletes the opportunity to compete against the country's finest competition, as well as providing a top-notch education. In an effort to ensure academic development, the university provides counseling systems designed specifically for student-athletes. Those services include academic advisement, guidance counseling and daily study halls.

CSUF also has made a commitment to provide facilities that enable fans and athletes alike to enjoy first-rate competition. The long-awaited Sports Complex gives Fullerton fans a much-needed home multipurpose and soccer stadium. The complex provides a 10,000-seat stadium plus upgraded baseball facilities that seat more than 4,000. Also included are two lighted softball diamonds and a lighted track that enable fans to enjoy the university's many night events. Titan Gymnasium already enjoys tremendous popularity among the local community, with more than 3,500 fans able to attend home basketball (men's and women's), women's gymnastics and women's volleyball events. An outdoor swimming complex, racquetball courts, weight-training facilities, a high-level gymnastics practice facility, plus facilities for wrestling and fencing make the Fullerton athletics complex a step above.

MEN'S INTERCOLLEGIATE ATHLETICS

Baseball

Few NCAA Division I baseball programs have enjoyed the degree of success that the Titans have had over the past 25 years. During that time, the Titans have won 18 conference championships, 11 regional championships and three national championships. Major League stars Tim Wallach (Los Angeles Dodgers), Phil Nevin (San Diego Padres) and Mark Kotsay (San Diego Padres) have developed at Fullerton. In total, there have been 33 CSUF baseball products competing in the major leagues. Additionally, the Titans boasted two 1996 Olympic team members in Kotsay and Brian Loyd. Year in and year out, the Titans compete against the nation's finest programs and always come out winners.

Basketball

The development of Fullerton basketball has been one of college sports' finest Cinderella stories. Often in contention for the Big West Championship, the program has produced more than half a dozen professional prospects, including current NBA player Bruce Bowen. The Titans made a pair of NIT appearances, to go with a trip to the NCAA Final Eight in 1978. 1984 Olympic Team point guard Leon Wood is one of many fine athletes who have helped develop the Titans into a program that will continue to grow. The university's commitment to basketball ensures success in the years to come.

Cross Country

Men's cross country is making positive strides. The program competes in the very competitive Big West Conference, which is perennially in the spotlight of national attention. The campus and outlying community offer a beautiful setting, which enables the sport to set new standards among local and national universities.

DEPARTMENT OFFICE

Titan House
(714) 278-2777

DIRECTOR OF ATHLETICS

Brian Quinn

SENIOR ASSOCIATE DIRECTOR OF ATHLETICS

Dr. Maryalyce Jeremiah

ASSISTANT DIRECTOR OF ATHLETICS, COMPLIANCE/ACADEMICS

Dr. June Kearney

ASSOCIATE DIRECTOR OF ATHLETICS, MEDIA REALIIONS

Mel Franks

COACHES

Baseball

George Horton

Basketball

Donny Daniels (Men)
Barbara Ehardt (Women)

Cross Country/Track (Men/Women)

John Elders

Fencing (Men/Women)

Heizaburo Okawa

Gymnastics (Women)

Julie Knight

Soccer

Al Mistri (Men)
Ali Khosroshahin (Women)

Softball

Michelle Gromacki

Tennis (Women)

Bill Reynolds

Volleyball (Women)

Carolyn Zimmerman

Wrestling

Dan Hicks

ATHLETIC ACADEMIC SERVICES

Soccer

Soccer is another of Fullerton's many sports where strong coaching has turned the program into a West Coast power. Al Mistri developed one of Southern California's finest soccer programs at Damien High School in LaVerne before taking over here. Through hard work and support from a summer soccer camp, Coach Mistri has turned Titan soccer into one of the NCAA's most competitive men's squads. Fullerton shared the conference championship in 1986 and 1992 and placed third in the nation in 1993 and fifth in 1994. The Titans have upset the nation's No. 1 ranked team five times (in nine attempts) during Mistri's 22-year tenure.

Fencing

One of the West Coast's few Division I fencing programs gives prospective athletes a chance to train in a traditional, unique sport. The team has enjoyed a great deal of success over the past few years competing against other universities in sabre, foil and epee. The Titans annually place at the NCAA Championships.

Track

Reinstated for the 1989 season, a spring outdoor track program provides a complement to the fall cross country schedule and should attract greater numbers of athletes. A new running track is part of the Sports Complex and has accelerated the growth of a program that was one of the mainstays of Fullerton's athletics department in the early 1970s. The Titans boast the current world record holder in the long jump in Mike Powell, a new assistant to coach John Elders.

Wrestling

Another sport that few West Coast schools support is prospering in Orange County as CSUF proves that hard work and strong coaching can bring success. Prospective athletes will find an atmosphere that is unparalleled among California universities. Top-notch competition and an All-American environment are two reasons why Fullerton wrestling is so successful. The Titans compete in the rugged Pac-10 conference and typically send multiple qualifiers to the NCAA championships.

WOMEN'S INTERCOLLEGIATE ATHLETICS

Basketball

The rise in popularity of women's basketball has its foundations tied to the success of Fullerton women's basketball teams. Under former Coach Billie Moore, the Titans won one of the very first national championships given out in the sport. Two of women's basketball's greatest names have risen from Fullerton – 1976 Olympian Nancy Dunkle and 1991 All-American Genia Miller, more recently Genia Miller Rycraw of the Los Angeles Sparks.

Fencing

One of the West Coast's few Division I fencing programs gives prospective athletes a chance to train in a traditional, unique sport. The team has enjoyed a great deal of success over the past few years competing against other universities.

Gymnastics

The consistent efforts of the women's gymnastics squad have made them a top-20 national power for virtually all of 25 seasons. No other school in the nation has produced more All-Americans or finished in the top three for more years than the Titans. Potential scholar-athletes receive an opportunity to compete and win year-round.

Soccer

This popular and growing sport for women was added in 1993, and Head Coach Ali Khosroshahin has goals for success matching the men's squad. He won the Big

West Conference championship in his first season (2001). In a few short seasons, the program has established a winning overall record. All-American Dolores Browning finished the 1995 season as the nation's No. 3 scorer.

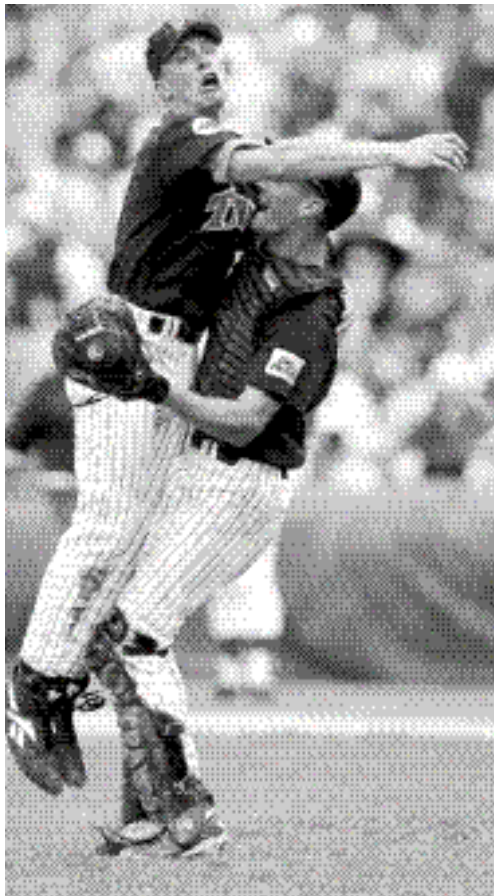
Softball

The sport of softball continues to set new standards of excellence on the local and national levels. Always a contender for the NCAA title, the Titans captured their first championship in 1986. Former Coach Judi Garman brought the university countless All-Americans, including former Broderick Award winners Kathy Van Wyk, Susan Lefebvre and Connie Clark. Head Coach Michelle Gromacki expects to continue the winning ways, and she won Big West Conference championships her first three seasons (2000-02). A two-diamond, on-campus facility enables an even greater audience to enjoy one of the nation's most successful teams face off against other national powers.

Cross Country

The rebirth of a spring track schedule has been a boon to cross-country, as athletes in the distance races can now train on a competitive level year-round. Heather Killeen became the Titans' first Division I cross-country All-American in 1994 and then won three events at the 1995 Big West Conference Track Championships. She was one of 10 finalists for 1995 NCAA Woman of the Year.





Volleyball

Titan volleyball is proving to be a program to watch. Recent success, combined with the obvious attraction of competing against NCAA Championship contenders who are members of the Big West, the nation's strongest volleyball conference, make volleyball an exciting attraction. The acquisition of future athletes plus the development of budding stars should create an environment that will enhance the program's success.

ATHLETIC ACADEMIC SERVICES

(714) 278-3057

As an integral part of the CSUF student advising system, the assistant director of athletics, academics and the Office of Athletic Academic Services provides advisement for student-athletes and referrals to campus academic support units, and conducts programs that are designed to assist student-athletes in meeting their academic goals.

Tennis

One of the university's many programs on the rise, Fullerton can take advantage of the beautiful climate of Orange County to attract the area's top tennis players. The Titans placed two athletes on the ITA Scholar Athlete All-America Team in 1996, Jennifer Canfield and Kara Kolb. The redevelopment of the tennis facilities in the Sports Complex make Titan tennis a program that is bound to remain competitive in the Big West.

Track – Indoor and Outdoor

Steady improvement and a growing coaching staff have combined to fuel optimism that the Titans will become a competitive force in the Big West Conference. A new running facility and the advancements made in distance running by the cross country team, combined with the climate in Southern California, should ensure Fullerton of a solid track program. The Titans boast the current world record holder in the men's long jump in new assistant coach Mike Powell.

Resources



RESOURCES

Anthropology Museum
Art Gallery
Center for Internships and Cooperative Education
Center for Oral and Public History
Chicano Resource Center
Daily Titan
Dining and Vending Services
Foreign language laboratory
Fullerton Arboretum
Grand Central Art Center
Herbarium
Mathematics Tutoring Center
Opportunity Center for Science and Mathematics Students
Reading Clinic
Speech, Language and Hearing Clinic
Theatre and Dance Department Productions
Titan Communications
Titan Shops
Undergraduate Reading Lab
Writing Center

ANTHROPOLOGY MUSEUM

McCarthy Hall 424

The Museum of Anthropology is an educational and research resource for the university and the community. It houses, sponsors and conducts a variety of activities as part of the CSUF Anthropology program, from lecture series to exhibits. Archaeological exhibits in the museum have included artifacts from California, the Middle East, Mesoamerica, the Southwest and Oceania, but the Museum sponsors exhibits that explore all aspects of anthropology, not just archaeology.

ART GALLERY

Since 1963 the Art Gallery at California State University, Fullerton has presented exhibitions and produced corresponding publications that have made substantive scholarly contributions to the field of visual culture. The Art Gallery fosters cross-disciplinary interaction and study, and its exhibitions function as instructional tools that inspire and challenge students and faculty. The highly publicized gallery projects represent the most visible and direct bridge between the art department and the general community.

In 1970, the Art Gallery moved to its current and permanent location in the Visual Arts Department. In subsequent years, the gallery has earned international recognition for its Museum Studies and Exhibition Design graduate program that provides students with practical and conceptual experience.

CENTER FOR INTERNSHIPS AND COOPERATIVE EDUCATION

Langsdorf Hall 229

(714) 278-2171

Valuable teaching and learning can occur outside the classroom. The Center for Internships and Cooperative Education has formed partnerships with business, industry, government agencies and community organizations to offer students the opportunity to gain academically related work experience prior to graduation. These practical learning opportunities extend the walls of the university, allowing students to combine theory and practice at an early stage in their professional growth. Both paid and unpaid internships are available.

Internships are beneficial to students in many ways:

- Academically: Integrate classroom theory with real-life experiences; understand the relevance of course work; increase motivation to learn
- Professionally: Explore a professional work environment; develop professional skills; establish a work history; build a network of professional contacts
- Personally: Increase self-confidence; improve human relations skills; prepare for life after graduation
- Financially: Approximately 70 percent of the internship positions posted with the Center for Internships and Cooperative Education are paid.

At Cal State Fullerton, internships are part of the academic mission. Our nationally recognized model provides students in nearly every major with an internship course.

A faculty internship coordinator supervises the course and is there to support learning and to provide guidance throughout the internship. Assignments and meetings with faculty help students reflect on their internship tasks and projects and facilitate connections between "hands-on" work and the content and theories in course work. At the completion of the internship, students

will have professionally-related work experience for their resume and reflected on their academic transcript.

Planning ahead is very important. Students should establish a file with the Center for Internships and Cooperative Education the semester prior to when they would like to begin an internship. For further information and orientation schedules, contact the Center for Internships and Cooperative Education. The center is open 8 a.m. to 5 p.m., Monday through Friday. Students can visit the center's website at www.fullerton.edu/internships for additional information.

CENTER FOR ORAL AND PUBLIC HISTORY

**Pollak Library-South, Room 363
(714) 278-3580**

The Center for Oral and Public History was established in 2002 and takes the place of the Oral History Program, which originated in 1968. The center inherits the Oral History Program's diverse 3,000 audio and video interviews relating largely to Orange County, Southern California and the western United States. Tapes and/or transcriptions of these interviews are available for student or community use through the center's office in Pollak Library-South, Room 363, Monday through Friday. An online catalog is being developed for accessing the center's holdings. Oral history workshops are provided by the center, which offers oral history classes through the History Department, Asian American Studies Program and Ruby Gerontology Center.

As part of its extended mission, the Center for Oral and Public History will connect the university with broader audiences by promoting historical skills and services related to editing, archives and record management, family/community studies, historic preservation, documentary film production, policy analysis, heritage tourism and high-technology media. An important function of the center will be to advise interested students on courses and majors to develop their knowledge and skills in public history.

In addition, the Center for Oral and Public History undertakes extensive grant and contract work through its research associates, sponsors a publication program and coordinates transcribing and binding/embossing services. The operation of the center is under the auspices of the History Department, with funding support from the College of Humanities and Social Services.

CHICANO RESOURCE CENTER

**Pollak Library-South 170A and 171
(714) 278-2537**

The Chicano Resource Center provides support for the academic, research and cultural interests of students, faculty and staff. The center was originally established in 1972 as a specially funded project to develop the university's collection on Mexico and the Southwest. Consequently the center is dedicated to building a complete collection of materials related to the Chicano experience.

The Chicano Resource Center is a great place to identify and locate resources on the history, culture and contemporary issues of Chicanos in the United States. The vast majority of materials, especially books and periodicals, are dispersed throughout the Library and are made available for study and research through library-wide retrieval mechanisms. The center also provides support to the Department of Chicana and Chicano Studies and related disciplines in developing specialized resources for study and research. The center further enhances existing university support services to ensure the recruitment, matriculation and retention of Chicano/Latino students at the university.

DAILY TITAN

Cal State Fullerton's *Daily Titan* is recognized as one of the best college newspapers in the United States. In recent years, the *Titan* and its reporters, editors and designers have won hundreds of regional and national awards.

The online edition of the *Daily Titan* was selected the best in the nation in the 1998 Associated College Press competition. The print edition was a finalist for best in the nation in 2002.

The *Daily Titan* is published every Tuesday through Friday throughout the academic year. It is produced, written and edited entirely by Cal State Fullerton students. Video coverage for the Titan's website and all photographs are produced by CSUF students.

The *Daily Titan* has a daily readership of more than 22,000. It is distributed at more than 40 locations on campus, as well as in news racks near the university and at the El Toro Campus.

Work on the *Daily Titan* provides intensive experience in news writing, copy editing, page layout, and the myriad other functions necessary to produce a modern daily newspaper and website.

DINING AND VENDING SERVICES

California State University Fullerton, Foundation Dining Services provides a large selection of dining options.

The Titan Student Union Food Court features Togo's sandwiches and salads, Titan Grill, Green Burrito, Busy Bee Asian Foods, Round Table Pizza Pronto! Krispy Kreme Doughnuts, and Starbucks Coffee and Bakery, in addition to Rock'N'Roll Pasta and Round Table Pizza and Pub located in the Titan Student Union Underground.

Titan Coffee, located on the second floor of Titan Shops Bookstore, features Starbucks coffee and bakery items.

Carl's Jr. Restaurant is located on the east side of campus, along with Langsdorf Hall Express, which specializes in Healthy Choice sandwiches, wraps, soups, salads and Starbucks coffee and bakery items and daily specials.

Nutwood Café is located south of Nutwood Ave. on the first floor of the College Park Building. Nutwood Café features Starbucks coffee and bakery items, hot breakfast items, sandwiches, soups, salads and daily specials.

One of our newest food services is El Toro Café located on the El Toro Campus, about 19 miles from the Cal State Fullerton Campus. El Toro Café features Starbucks coffee and bakery items, hot breakfast items, assorted sandwiches and wraps, soups and a wide variety of salads and daily lunch specials, as well as several grab-n-go convenience meals.

We have also added a convenience store at the new student housing complex featuring coffee, assorted bakery items, sandwiches, salads, snack foods, microwaveable items, meals to go and toiletries.

We also offer a wide variety of carts featuring gourmet pretzels, hot dogs, churros, Kettle Master's popcorn, Tastera Beverages and Juice It Up!. Our vending services also include pay phones throughout the campus and laundry machines in our Residence Halls. In addition to these venues, we offer a large variety of Pepsi, snack and coffee machines throughout the Fullerton and El Toro campuses.

Our Catering Program offers an extensive selection of prepared menu items for breakfast meetings, business luncheons, receptions and formal dinners to wedding receptions. Additionally, we provide food and beverage concessions at all university-related sporting

events, concerts, etc. For additional information, visit us at our food service website: www.csuf-food.com or our catering website www.csuf-catering.com

If you would like to discuss your event or have any questions, please call us at (714) 278-7293 or (714) 278-4124.

FOREIGN LANGUAGE LABORATORY

Humanities 325

(714) 278-2153

A 24-station computer laboratory featuring multimedia interactive capabilities facilitates both individual and group learning activities in conjunction with a networked instructor station. The computer lab is also connected to the Internet, where students can access a wide variety of authentic language materials contained in websites in the countries whose languages they are studying. Adjacent to the computer lab is an 18-station Tandberg IS-10 audiotape lab.

FULLERTON ARBORETUM

The Fullerton Arboretum, a 26-acre botanical garden, is located on the northeast corner of campus. The gardens contain plants from around the world. Many are grouped according to their moisture requirements. Others form special collections such as conifers, palms, rare fruits and California natives. Special plant displays help visitors select materials for their own landscaping.

The recirculating waterfall, streams and ponds are a focal point for migratory waterfowl and visitors from the university and surrounding communities. The Arboretum is an island of serenity in an increasingly metropolitan environment.

The Arboretum also offers opportunities to study local history and culture. Heritage House, nestled in the garden, is the restored residence and medical office of Dr. George C. Clark, an Orange County pioneer physician. The Clark home was built in 1894 and exemplifies the Eastlake Victorian style of architecture. The house is listed in the National Register of Historic Places and the Inventory of California Historic Sites. It is also an Orange County Historic Site. It is open to the public on weekends and weekdays by reservation. Trained docents discuss period furnishings and memorabilia.

The CSUF Associated Students, Inc. (ASI) helped to initiate the Fullerton Arboretum by contributing \$10,000 in 1971. Since then,

ASI has contributed support monies each year to hire students to help in the maintenance and operation of the Arboretum.

The Friends of Fullerton Arboretum, a volunteer support group, also supplies operating monies, manages the gift and garden shop, propagates plants for plant sales and provides countless hours of volunteer effort on behalf of the Arboretum.

The Fullerton Arboretum is open 8 a.m. to 4:45 p.m., seven days a week. The Arboretum is closed on Thanksgiving, Christmas and New Year's Day.

GRAND CENTRAL ART CENTER

125 N. Broadway

Santa Ana

(714) 567-7234

The City of Santa Ana and Cal State Fullerton formed an innovative alliance in 1993 to create the university's Grand Central Art Center, located in downtown Santa Ana in the heart of the Artists Village. The center, which opened in spring 1999, is housed in a block-long, 45,000 sq. foot facility. The \$7.5 million renovation of the historic 1924 building was a joint venture designed to bring together art, education and the community.

The Grand Central Art Center provides a setting for graduate art majors to live, learn and work in an artists community. In addition to studio and living space for students, the art center houses classrooms, galleries and exhibition spaces, a black-box theater, plus a print-making studio, gallery gift shop, and café and reading room. The center's 83-seat black-box theater presents lectures, film series, panel discussions and productions by the university's award-winning theatre department. In addition, the International Artist-in-Residence Program provides the opportunity for professional artists from around the world to live and work at the center while working directly with CSUF graduate students and the community.

HERBARIUM

The Fay A. MacFadden Herbarium is named after Fay A. MacFadden, who sold her extensive collection of plants to the university just prior to her death in 1964. The collection now includes more than 25,000 vascular plants, about 12,000 bryophytes and nearly 800 lichen specimens. The plants are used as research and teaching tools.

MATHEMATICS TUTORING CENTER

McCarthy Hall 187

The Mathematics Tutoring Center is available on a drop-in basis to all students enrolled in a mathematics class. Tutors are trained to help students understand the basic concepts necessary to complete homework assignments and to perform well on exams. The center is open Monday through Thursday from 8 a.m. to 5 p.m. and Friday from 8 a.m. until noon. The Mathematics Tutoring Center is directed by Dr. Harriet Edwards.

OPPORTUNITY CENTER FOR SCIENCE AND MATHEMATICS STUDENTS

McCarthy Hall 488

(714) 278-7082

The Opportunity Center for Science and Mathematics Students offers a resource center for students to enhance their time on campus. Students can take advantage of the center's computers for word processing and Internet access to research many science and math-related websites. The comfortable setting also provides study tables for individual or group study sessions and a conference room that can be reserved for meetings. Tutors for biology, physics, math and chemistry courses also are available.

The center also provides a wealth of information on scholarships, research programs, career opportunities and graduate school programs. Students can find out how to become involved in student organization activities and learn how to get published in *Dimensions: the Journal for Undergraduate Research in Natural Sciences and Mathematics*. The assistant dean for student affairs in the College of Natural Sciences and Mathematics is available for advisement on campus policies, student success skills and campus referrals. The center is open from 8 a.m. to 7 p.m., Monday through Thursday and from 8 a.m. to 5 p.m. on Friday.

READING CLINIC

Education Classroom 24

(714) 278-7971

The Reading Clinic serves three major purposes. First, it provides a controlled, supervised setting for the training of reading specialists and classroom teachers who wish to improve their skills in working with learning disabled and reading disabled students.

Second, the clinic serves as a community service providing very low cost, high quality instruction in reading that is not available elsewhere in Orange County.

The third purpose of the clinic is to provide parent education to community members whose children have reading disabilities. The clinic provides parent inservice sessions and a website on literacy information. The clinic is proud of its 30-year service to the university and community.

SPEECH, LANGUAGE AND HEARING CLINIC

The Speech, Language and Hearing Clinic is an integral part of the university's curricular programs leading to a B.A. and M.A. Degree in Communicative Disorders. Since 1961, the Department of Speech Communication has provided speech, language and hearing services to the community in conjunction with its training program for professional speech-language pathologists. The graduate program in Communicative Disorders holds the distinction of being one of only two academic programs in California to maintain continuous accreditation by the Council on Academic Accreditation of the American Speech-Language-Hearing Association since September 1969.

The clinic is composed of a Speech Pathology Unit, an Audiology Unit and several research laboratories with special emphasis given to voice disorders, normal communication alternatives, and disorders of communication in persons who have diverse linguistic or cultural backgrounds. The clinic offers the services of: a resident professional speech-language pathologist who holds the Certificate of Clinical Competence (CCC-SLP); faculty supervisors who are clinically certified and hold doctoral degrees in the field; and student clinicians who have met strictly prescribed standards for admission to clinical practicum. Referrals to the clinic come from a variety of sources including: physicians, teachers, rehabilitative centers, private speech-language pathologists and audiologists, and self-referrals. Services available at the clinic include diagnostic evaluations; therapeutic intervention; audiometric testing; and rehabilitative audiology, including hearing aid evaluations, screening tests for students seeking state credentials, and family counseling relative to problems associated with communicative disorders.

THEATRE AND DANCE DEPARTMENT PRODUCTIONS

The Department of Theatre and Dance produces six plays, two musicals and two dance concerts each year on their main stages along with theatre for young audiences, touring plays, MFA project productions, and original one-acts. CSUF students receive special rates to all Theatre and Dance Department productions.

Thirteen out of the last 16 entries in the National Kennedy Center/American College Theatre Festival have been selected for production at the regional festivals, chosen each year from over 75 university entrants. In 1993, for the first time in the history of the Festival, the department was selected to present two original productions; "The Manager" and "All That He Was" at the National Kennedy Center/American College Theatre Festival at the John F. Kennedy Center in Washington, D.C. "All That He Was" was also named as the Kennedy Center representative to an international theatre conference in Barcelona, Spain and performed at that venue.

TITAN COMMUNICATIONS

Titan Communications is a cutting-edge media facility in the College of Communications that provides the university and the community with quality digital content production and distribution services.

The facility houses the state-of-the-art digital equipment and video production recording studios, non-linear editing suites, digital audio editing bays, Internet radio, control room, special effects and animation tools, broadcast quality cameras, and advanced storage and Web casting equipment.

The media facility functions as a laboratory in support of classroom and co-curricular activities, as well as students' online media, including Titan Internet Radio, Titan TV News Magazine and the *Daily Titan* Interactive. In addition, Titan Communications supports the university's internal and external communications, as well as the College of Communications online education through its personnel, production studios and Web TV and cable services.

Under faculty and staff supervision, Titan Communications provides an intersection between the academic and professional settings. Frequently, programs produced by student teams are distributed via live broadcast and video-on-demand on the Internet and on cable systems in Orange County.

Titan Communications provides a variety of opportunities for students for developing creative and technical skills, gaining practical hands-on experience and creating electronic portfolios. Students may work in Titan Communications on class or co-curricular projects, serve as volunteers, or work as paid staff in connection with student media groups or commissioned projects.

TITAN SHOPS

Titan Shops Center - Commons Building
<http://bookstore.fullerton.edu>
(714) 278-3418

At *Titan Shops* our philosophy revolves around serving you. Our customer-oriented staff made up mostly of Cal State Fullerton students, will service you with a smile when you walk in our store. One-stop shopping, excellent customer service, fantastic products, great values and convenience is our major focus when serving the university community.

Titan Shops is a division of the California State University, Fullerton Foundation which is a non-profit auxiliary organization supporting the university community.

Titan Shops is a multi-level bookstore composed of various divisions. On the upper level you'll find *Titan Books*, a full-service bookstore. Besides carrying the required textbooks and custom published course packets for class, we also have a complete general book section. We offer *New York Times* Bestsellers at a 20 percent discount and the latest in new releases. We also have the largest selection of reference books in the area to help you succeed in the classroom. You'll also find bargain books as low as 50-90 percent off the publisher's price. If the book you want isn't in stock, we will special order it for you at no extra charge. Also located on the upper level is *Titan Coffee* featuring Starbucks coffee and baked goods and free internet access.

On the lower level of Titan Shops we have: *Titan Office*, which carries office and school supplies, peripherals, and software; *Titan Gear*, which offers emblematic gifts, clothing and notebooks; *Titan Newsstand* which carries a large selection of magazines and newspapers, as well as scantrons and other test taking materials; *Titan Express*, a full line convenience store where you can grab a quick snack, a drink or some ice-cream; and *Titan Card Shop*, which features a complete selection of Carlton Cards. The *Titan Technology Center* coordinates orders for all campus-approved hardware platforms and software products. The Titan Technology Center provides CSUF students with a convenient location to subscribe to Titan Access while providing space for vendors to highlight and demonstrate the latest technology. Through the Tech Center, Titan Shops is also able to offer to faculty, staff and students the same campus rollout computer configurations at a discounted price.

If you have any questions, call (714) 278-3418, or check us out on the Web: <http://bookstore.fullerton.edu>. Our website has the current bookstore hours, dates of promotions, sales, bookstore author signings, computer software and hardware, school supplies, clothing and instructions on ordering your textbooks by using Titan Shops website.

Titan Shops at El Toro Campus

Throughout the school year, Titan Shops will be located at our El Toro Campus in ETC- 220. School supplies, testing materials, gifts, apparel and cards will be available in this mini bookstore. At the beginning of each semester, we will expand our selection of merchandise to include all the necessary textbooks needed for classes offered at El Toro. Hours of operation and textbook ordering for El Toro can be found by going online at <http://bookstore.fullerton.edu>.

Pulse Copy Center

The Pulse Copy Center offers a full range of copying and printing services including full and self-serve copying, color copying, thesis processing, binding, faxing, and laminating. In addition, The Pulse offers specialty products such as rubber stamps, resumes, business cards, and posters. Pulse also offers free pick up and delivery. The Pulse Center is a proud partner of the CSUF campus community. If you have any questions, call (714) 278-4980.

Orange County Teachers Federal Credit Union (OCTFCU)

CSUF faculty, staff and students are eligible to join the Orange County Teacher's Federal Credit Union, which offers a full range of financial products and services. The credit union is located on the upper level of Titan Shops.

Brief Stop and The Yum

The Brief Stop is located in Langsdorf Hall and The Yum is located in the Titan Student Union. Both are mini convenience stores. You can purchase test-taking materials, school supplies, health and beauty aids, and a wide selection of snacks – all conveniently located in a store close to your classes.

Textbook Purchases

For those students who need to purchase textbooks and cannot be accommodated by the extended hours, we suggest that you order your text materials using one of the two methods listed below:

Internet Orders

Place your order online at <http://bookstore.fullerton.edu>. Enter your course schedule number to start. Follow the easy instructions to purchase your books and include your Visa, MasterCard or American Express number. Used text will be shipped whenever possible if indicated and in stock. For your convenience, books can either be shipped to your home via UPS or picked up at the bookstore. All books are charged to your Visa, MasterCard or American express account at the time your order is shipped or brought to the pickup window. All credit card information you provide is encrypted with the latest Web security technology to ensure the highest level of safeguard for your information

Phone Orders

Call (714) 278-3418 and request the Special Order Department. Please have your Visa, MasterCard or American Express number, expiration date, home address and phone number readily available when placing a phone order.

UNDERGRADUATE READING LAB

Education Classroom 24A and 18

The Undergraduate Reading Lab/ Professional Library is an essential element in the Reading Department for both graduate and undergraduate students. It serves as a resource for materials and equipment by which undergraduate students can improve their reading skills and complete additional class assignments. The lab also functions as a liaison between faculty and students, as a diagnostic lab for required or additional assessment of student skills, and as a professional resource for graduate students and faculty.

The lab has also offered services to special students from the Disabled Student Services, Women's Center/Adult Reentry and the Career Planning and Placement Center. In addition, the development of a professional library and the recent donation of material from the Reading Educators Guild aids graduate students in their research and course work. Finally, a goal of this lab is to develop a base of software materials for both classroom and individual student use.

WRITING CENTER

McCarthy Hall 45 (714) 278-3650

The Writing Center provides tutorial assistance primarily for students who are enrolled in English Department writing classes. However, tutors will also assist students who need help in writing papers for other university classes. Tutors offer individualized instruction, helping students write the kind of clear, concise prose necessary for academic and professional writing. While they will not proofread or edit papers, tutors do offer constructive suggestions designed to help the student master the techniques of proofreading and editing. The goal is to increase the student's competence, not to improve any given paper.

Tutors are also trained to help non-native speakers of English improve their writing skills. If a student needs intensive work on grammar, one-to-one tutoring in this skill is available and can be supplemented with study materials. Additionally, the center has sample topics for the Examination in Writing Proficiency (EWP), which students may write on and then receive tutorial feedback prior to the exam.



Academic Advisement

Academic Advisement



ACADEMIC ADVISEMENT POLICY

CSUF Academic Policy (UPS 300.002) states that:

- the responsibility for ensuring the availability of academic advisement rests with each college dean
- every student should declare a major or college of interest as soon as possible after admission to the university; and
- all students shall confer with an academic adviser on a regular basis.
- all first-time freshmen must receive academic advisement prior to registration for their first semester.

CHOOSING GENERAL EDUCATION COURSES AND ELECTIVES

In keeping with the liberal arts tradition, the university requires its graduates to have sampled a variety of disciplines as part of their general education. The broad categories of general education courses are presented in the catalog section on “General Education.”

All students are strongly encouraged to consult the Academic Advisement Center about selection of general education and elective courses.

ACADEMIC ADVISEMENT

- Academic Advisement Policy
- Choosing General Education Courses and Electives
- Advisement in the Major
- College Advisement Offices
- Academic Advisement Center
- Undeclared Majors
- Choosing an Undergraduate Major
- Planning a Major Program
- Change of Major, Degree or Credential Objective
- Departmental Academic Advisement
- Preprofessional Programs
- Health Professions
- Teaching Careers
- Immigration Requirements for Licensure
- Answers to Your Questions

ADVISEMENT IN THE MAJOR

Students who have declared a major should consult their departmental adviser on a regular basis for academic advisement.

Students who wish to explore the majors offered by a specific college should contact either the college advisement office or the college dean’s office for referral to the department.

COLLEGE ADVISEMENT OFFICES

Students who wish to explore the majors offered by a specific college should contact the appropriate college advisement office:

College of the Arts	Office of the Dean Visual Arts 199 (714) 278-3256
College of Business and Economics	Business Advising Center Langsdorf Hall 731 (714) 278-2211
College of Communications	Advisement and Peer Mentoring Center College Park 425 (714) 278-7620
College of Engineering and Computer Science	Office of the Dean Computer Science 502 (714) 278-3362
College of Human Development and Community Service	Office of the Dean Education Classroom 324 (714) 278-3311
College of Humanities and Social Sciences	H&SS Student Access Center Humanities 112 (714) 278-2594

College of Natural Sciences and Mathematics
Office of the Dean
McCarthy Hall 166
(714) 278-2638

ACADEMIC ADVISEMENT CENTER

University Hall 123

(714) 278-3606

www.fullerton.edu/aac

The Academic Advisement Center provides academic counseling to matriculated students with respect to the General Education Program and the policies/procedures associated with that program. The Academic Advisement Center is the academic home department for undeclared students, providing services normally given through the student's declared major department. Additionally, the center provides programs and services to assist students in the selection of a major. Students seeking information about the implications of academic probation and disqualification are encouraged to visit the Academic Advisement Center for a personal consultation. Please consult the Academic Advisement Center website for useful information about the General Education program, graduation requirements, university policies and procedures. The center provides walk-in advising, no appointment necessary.

UNDECLARED MAJORS

Students who have not selected a major are "undeclared." The Academic Advisement Center provides a variety of resources and services to assist students in choosing an appropriate major. Information about the various majors at Cal State Fullerton is available in the "Undeclared Room" in the center (UH-124). The Academic Advisement Center, in collaboration with the Career Planning and Placement Center and the Pollak Library, offers a program designed specifically for the undeclared student to explore the range of majors available.

PLANNING A MAJOR PROGRAM

When students have selected a major field, they should familiarize themselves with all the requirements that are specified in this catalog under their chosen degree program. They should make a tentative semester-by-semester plan for completing the requirements, including prerequisites, and discuss this plan with an adviser in the major. In addition to courses in the major department,

related courses in other fields and supporting courses in basic skills may also be required. These should be included in the tentative semester-by-semester plan.

Some departments require placement tests prior to enrolling in some classes (e.g., foreign languages, music and computer science). The times and places for such placement tests are given in the class schedule. Students should purchase a copy of the class schedule at the Titan Bookstore prior to the start of registration.

CHANGE OF MAJOR, DEGREE OR CREDENTIAL OBJECTIVE

To change a major, degree objective, or credential objective, obtain the required form in the Office of Admissions and Records (LH-114) and take it to the appropriate office(s) for signature(s). Such a change is not official until the form has been signed and filed in the Registrar's Office.

DEPARTMENTAL ACADEMIC ADVISEMENT

An adviser in the major can provide information and suggestions and can assist the student to find the most desirable ways to meet the requirements for graduation and for the major or credential. It is the responsibility of the student to obtain the assistance of an academic adviser. The final choice of courses and the responsibility for the program lies with the student. Undergraduate students who have not yet decided upon a major (undeclared students) or who are not seeking a degree will be advised in the Academic Advisement Center.

If students have transferred to Cal State Fullerton, the academic department advisers are able to offer better advice if students provide lists of courses they have taken and their own copies of transcripts from colleges previously attended.

PREPROFESSIONAL PROGRAMS

The academic programs of the university provide appropriate preparation for graduate work in a variety of fields. Students who have made tentative decisions about the institutions at which they may wish to pursue graduate work should consult the catalogs of those graduate colleges as they plan their undergraduate course work. Students planning to pursue graduate work should supplement their undergraduate plan of study by completing course requirements at major graduate colleges.

The university offers a number of professional programs through the master's degree. These include programs in the fine arts, business administration, communications, education, engineering, health education and kinesiology and recreation, public administration, speech pathology-audiology and others. Students interested in preparing for professional careers in these areas, either here or at other educational institutions, are encouraged to seek assistance and guidance from CSUF faculty members in these fields.

Prelaw Preparation

It is recommended that prospective law students prepare themselves in such fields as English, American history, economics, philosophy, political science (particularly the history and development of English and American political institutions) and such undergraduate courses as judicial process, administrative law, constitutional law and international law, philosophy (particularly ethics and logic), business administration, anthropology, psychology and sociology.

A distribution of course sequences among the social sciences, the natural sciences and the humanities is desirable. Students interested in becoming lawyers should contact the Prelaw Adviser in the Division of Political Science and Criminal Justice. Some faculty members in the College of Business and Economics and the Departments of American Studies and History also can provide advice and assistance.

Pretheological

Students who might be interested in pursuing careers in the ministry, the teaching of religion, and associated fields should take some courses in comparative religion, psychology, anthropology, sociology, philosophy, history, English, speech communication and a foreign language. Students desiring assistance and counseling regarding advanced work in religious studies/comparative religion or professional careers in the ministry or rabbinate may seek help from the faculty in the Department of Comparative Religion.

Human Services

Students who plan to seek employment in social work or human services should prepare themselves in the fields of human services, child and adolescent development, psychology, sociology, anthropology, political science, economics and research methods in the social sciences.

Students who intend to enter a professional college following undergraduate training should learn about the specific prerequisites for admission to the graduate college of their choice. Ordinarily a major in one of the social sciences and some additional work in at least several other social sciences are recommended. Students with interests in pursuing careers in the field of social welfare should contact the Departments of Sociology, Child and Adolescent Studies or Human Services for advice and assistance.

HEALTH PROFESSIONS

Langsdorf Hall 223
(714) 278-3980

All health professions programs are seeking the best qualified applicants with a good command of communications skills, rigorous basic science preparation, a broad general education base, and outside clinical experience. The Health Professions Advising Office provides information and advisement for prospective applicants. It is strongly recommended that students who wish to pursue careers in the health professions contact this office.

TEACHING CAREERS

Students who plan to enter the teaching profession must prepare themselves by developing depth of knowledge in the subject areas they plan to teach. Teachers of elementary school-children must have a solid foundation of knowledge in all subjects taught in the elementary classroom. High school teachers must develop expertise in the subject named on their single subject credentials. Students are encouraged to seek advice early in their academic careers to most efficiently plan a program of study that effectively blends general education, major and subject matter preparation requirements. The Center for Careers in Teaching provides information and advisement for prospective teachers. Visit the Center for Careers in Teaching website (www.fullerton.edu/cct) or call (714) 278-7130.

IMMIGRATION REQUIREMENTS FOR LICENSURE

Students who will require a professional or commercial license provided by a local, state or federal government agency in order to engage in an occupation for which the CSU may be training them must meet the immigration requirements of the Personal Responsibility and Work Opportunity Reconciliation Act to achieve licensure. Information concerning the regulation is available from Robert Ericksen, Office of International Education and Exchange, University Hall 244, at (714) 278-2787.

ANSWERS TO YOUR QUESTIONS

Topic	Where To Go	Location	Telephone
Academic Appeals	Academic Appeals Office	Langsdorf Hall 805	278-3836
Add or Drop a Class	See Class Schedule		
Address Change	Admissions & Records Service Center	Langsdorf Hall 114	278-7601
Admissions/Applications	Admissions & Records Service Center	Langsdorf Hall 114	278-7601
Advisement:			
Undeclared Major	Academic Advisement Center	University Hall 123	278-3606
Declared Majors	Major Department		
Athletics Tickets	Athletic Ticket Office	Titan House	278-2783
Child Care	Children's Center	Temporary 200	278-2961
Counseling:			
Personal	Counseling and Psychological Services	Student Health and Counseling, East Bldg.	278-3040
Vocational	Career Planning & Placement Center	Langsdorf Hall 208	278-3121
Degree Application/Diploma Orders	Graduation Unit	Langsdorf Hall 108	278-2300
Degree Evaluation, Undergraduate	Graduation Unit	Langsdorf Hall 108	278-2300
Disabled Student Services	Disabled Student Services Office	University Hall 101	278-3117
Disqualification/Reinstatement	Academic Advisement Center	University Hall 123	278-3606
Emergency Messages	Vice President for Student Affairs	Langsdorf Hall 805	278-3221
Employment:			
Business, Industry, Government	Career Planning & Placement Center	Langsdorf Hall 208	278-3121
Educational	Career Planning & Placement Center	Langsdorf Hall 208	278-3121
Minority Relations	Career Planning & Placement Center	Langsdorf Hall 208	278-3121
Student (Part-Time)	Career Planning & Placement Center	Langsdorf Hall 208	278-3121
Staff	Human Resources	College Park 700	278-2425
Enrollment Verification:			
Duplicate I.D. Card	TitanCard Office	Pollak Library (South)	278-3555
Fee Receipt	Student Financial Services	University Hall 180	278-3918
Letter Request	Admissions & Records Service Center	Langsdorf Hall 114	278-7601
Extension Class Information	Extended Education Information	Temporary 14	278-2611
Evaluations/General Education	Admissions & Records Service Center	Langsdorf Hall 114	278-7601
Financial Aid	Financial Aid Office	University Hall 146	278-3125
Foreign Student:			
Advisement	Major Department		
Permits to Register	International Education & Exchange	University Hall 244	278-2787
Graduate Studies	Graduate Studies Office	McCarthy Hall 103	278-2618
Graduation Requirements (undergraduate)	Graduation Unit	Langsdorf Hall 108	278-2300
Health Insurance	Titan Student Union	Lobby	278-2468
Housing	Housing & Residence Life	Cobb Residence Hall Housing Office	278-2168
Internships and Cooperative Education	Center for Internships & Cooperative Education	Langsdorf Hall 229	278-2171
Library Information	Pollak Library	Library Lobby	278-2633
Name Change	Admissions & Records Service Center	Langsdorf Hall 114	278-7601
Organizations and Clubs	Student Organization Resource Center	Titan Student Union 247	278-7622
Outreach Services	University Outreach Services	University Hall 210B	278-2086
Parking:			
Fees	Student Financial Services	University Hall 180	278-3918
Information	Parking and Transportation Services	Temporary 14	278-3082
Handicapped	Disabled Student Services	University Hall 101	278-3117
Readmission	Admissions & Records Service Center	Langsdorf Hall 114	278-7601
Records (Student)	Admissions & Records Service Center	Langsdorf Hall 114	278-7601
Registration Fees	Student Financial Services	University Hall 180	278-3918
Residency	Admissions & Records Service Center	Langsdorf Hall 114	278-7601
Scholarships	Financial Aid Office	University Hall 146	278-3125
Student Academic Services (EOP/SAA/Retention)	Student Academic Services Office	University Hall 138	278-2484
Summer Sessions, Information	Extended Education Office	Temporary 14	278-2611
Test Information	Testing Services	University Hall 229	278-3838
Transcripts	Admissions & Records Service Center	Langsdorf Hall 114	278-7601
Transfer Services	Transfer Services Center	Langsdorf Hall 214	278-3358
Tutoring	Intensive Learning Experience	McCarthy Hall 26	278-7236
Veterans Certification	Admissions & Records Service Center	Langsdorf Hall 114	278-7601
Women's Center	Women's Center/Adult Reentry	University Hall 205	278-3928

