

# About the University





Every day, I am honored and proud to lead this remarkable institution.

We offer an outstanding educational and co-curricular experience with both the facilities and network of student support services to help you succeed. As our mission statement proclaims, this is a university where “learning is preeminent,” and truly a place where you can thrive and excel.

Our eight colleges offer 107 high-caliber degree programs, including 50 master’s degrees and two doctorates. With full accreditation from the Western Association of Schools and Colleges, many of our degree programs are further distinguished by national accreditations and associations. In fact, a number of these programs have achieved national prominence because of our outstanding faculty and alumni achievements.

As a Cal State Fullerton student, you will learn from highly accomplished faculty members who create an exceptional learning environment and take a personal interest in your success. We encourage you to go beyond the classroom, and apply knowledge to real-world experiences – undergraduate research, professional internships, student competitions, study abroad and more. You can also enhance your education in meaningful ways that include service-learning, community service and volunteerism.

I know you will be impressed with the comfortable, welcoming atmosphere on campus. Our multicultural University community will enrich your college experience with opportunities to learn, socialize and work together with students from diverse backgrounds. What’s more, you gain invaluable perspectives and skills that enhance your ability to compete and succeed beyond college.

A university education prepares you for a future full of choices, whether it’s launching a rewarding career in your chosen profession or preparing for graduate and professional programs. At Cal State Fullerton, incredible things happen when we reach higher. Our entire University community shares a commitment to helping you to succeed.

A handwritten signature in black ink that reads "Mildred García". The signature is fluid and cursive, with a large initial 'M' and 'G'.

Mildred García  
PRESIDENT





Orange Coast College was founded in 1949  
 as a part of the University of California  
 system. It is the only college in the state  
 of California that is named after a region.  
 Orange Coast College was the first of  
 23 colleges in the state to be named  
 after a region. The college was the first  
 to be named after a region in the state  
 of California. The college was the first  
 to be named after a region in the state  
 of California. The college was the first  
 to be named after a region in the state  
 of California.

Founders  
 Dr. William E. Longford 1949 - 1959  
 Dr. J. Donald Smith 1959 - 1969  
 Dr. Robert S. Johnson 1969 - 1979  
 Dr. Paul H. Moore 1979 - 1989  
 Dr. William E. Longford 1989 - 1999

CALIFORNIA STATE UNIVERSITY

# Contents

President's Message .....	1
Academic Calendars .....	6
The California State University .....	8
About the University .....	12
Mission and Goals .....	12
Accreditations and Associations .....	12
Irvine Campus .....	15
CSUF Garden Grove Center .....	16
Students of the University .....	16
The Faculty .....	17
CSU Fullerton Auxiliary Services Corporation .....	17
Alumni Association .....	18
Community Support Groups .....	18
University Administration .....	20

## COLLEGES

College of the Arts .....	26
College of Communications .....	28
College of Education .....	30
College of Engineering and Computer Science .....	32
College of Health and Human Development .....	34
College of Humanities and Social Sciences .....	36
College of Natural Sciences and Mathematics .....	40
Mihaylo College of Business and Economics .....	42
Degree Programs Listing .....	44

## UNIVERSITY REQUIREMENTS AND REGULATIONS

Graduation Requirements for the Bachelor's Degree .....	46
General Education Requirements .....	50
General Education Certification Policy .....	52
General Education Goals .....	52
Teaching Credential Programs .....	59
Course Numbering Code .....	63
Library Course .....	65
University Studies Courses .....	65

## University Regulations

Commitment to Civility .....	66
Enrollment Regulations .....	66
Class Attendance .....	67
Grading System .....	69
Administrative Grading Symbols .....	70
Student Records .....	72
Challenge Exams .....	72
Repetition of Courses .....	72
Grade Changes .....	73
Academic Dishonesty .....	73
Transcripts .....	74
Continuous Attendance and Catalog Rights .....	75
Stop-Out Policy .....	75
Leave of Absence .....	76
Withdrawal from the University .....	76
Retention, Probation and Disqualification .....	76
Student Conduct .....	77
Parking .....	79
Use of Bicycles and Skateboards .....	79
University Police .....	80
Debts Owed to the University .....	81
Nondiscrimination Policy .....	81

Sexual Harassment .....	81
Privacy Rights .....	83
Use of Social Security Number .....	85
Student Complaint Procedure .....	85

## GRADUATE REGULATIONS

Application Procedures .....	88
All-University Master's Degree Requirements .....	89
Writing Requirement .....	91
Graduate Academic Standards .....	94
Graduate Enrollment Policies .....	96
Leave of Absence .....	96
Transfer Credit .....	98
Dissertations, Theses and Projects .....	99
Graduate Student Checklist .....	102

## ADMISSIONS

### Undergraduate Students

Freshmen Requirements .....	104
Eligibility Index .....	105
Provisional Admission for Freshman .....	105
Transfer Requirements .....	106
Health Screening .....	107
Test Scores .....	108
TOEFL Requirement .....	108
Computer Competency .....	108
Placement Test Requirements .....	108
Residency Determination .....	110

### Application Procedures

How to Apply for Admission .....	113
Application Filing Periods .....	114
Hardship Petitions .....	114

### Admission Requirements

First-Time Freshmen .....	115
Undergraduate Transfer Students .....	116
International Students .....	118
American Language Program .....	119
Readmission .....	119

### Transfer Credits

Evaluation of Transfer Credits .....	120
Credit by Advance Placement .....	121

## ACADEMIC ADVISEMENT

Academic Advisement Policy .....	124
New Student Orientations .....	124
General Education Courses and Electives .....	125
Advisement in the Major .....	125
Titan Degree Audit .....	125
College Advisement Offices .....	125
Academic Advisement Center .....	125
Undeclared Majors .....	126
Planning a Major Program .....	126
Change of Major .....	126
Departmental Academic Advisement .....	126
Preprofessional Programs .....	127
Health Professions .....	127
Teaching Careers .....	127
Answers to Your Questions .....	128

## REGISTRATION

Registration Information .....	130
Fee Information .....	132
Financial Aid .....	137

## ACADEMIC DEPARTMENTS AND PROGRAMS

Accounting .....	146
African American Studies .....	152
American Studies .....	156
Anthropology .....	162
Art .....	170
Asian American Studies.. ..	186
Asian Studies .....	190
Biological Science .....	192
Business Administration Degrees .....	207
Chemistry and Biochemistry .....	213
Chicana and Chicano Studies .....	222
Child and Adolescent Studies .....	226
Civil and Environmental Engineering .....	233
Communications .....	241
Comparative Religion .....	251
Computer Engineering .....	257
Computer Science .....	261
Counseling .....	269
Criminal Justice .....	273
Economics .....	277
Educational Leadership .....	283
Electrical Engineering .....	292
Elementary and Bilingual Education .....	301
English, Comparative Literature and Linguistics .....	310
Environmental Engineering .....	319
Environmental Studies .....	321
European Studies .....	324
Finance .....	328
Geography .....	332
Geological Sciences .....	338
Gerontology .....	345
Health Science .....	349
History .....	357
Human Communication Studies .....	368
Human Services .....	379
Information Systems and Decision Sciences .....	384
Instructional Design and Technology .....	393
International Business Program .....	396
Kinesiology .....	399
Latin American Studies Program .....	412
Liberal Studies .....	415
Linguistics Program .....	419
Management .....	423
Marketing .....	428
Mathematics .....	431
Mechanical Engineering .....	441
Military Science Program .....	449
Modern Languages and Literatures .....	452
Music .....	472
Nursing .....	492
Philosophy .....	508
Physics .....	514
Political Science .....	520
Psychology .....	528
Public Administration .....	537
Radio-TV-Film .....	541
Reading .....	545
Science Education Program .....	549
Secondary Education .....	554

Social Work .....	561
Sociology .....	566
Software Engineering .....	573
Special Education .....	575
Theatre and Dance .....	583
Women and Gender Studies .....	596
Degree Programs Listing .....	600

## SPECIAL ACADEMIC PROGRAMS

### Freshman Programs

Freshman Programs Student Association .....	603
Freshman Programs Advisory Board .....	603
Freshman Programs Learning Communities .....	603

### University Honors Programs

Admission and Eligibility .....	604
Curriculum .....	604
Honors Courses .....	605

### Honors and Recognition

Admission with Distinction .....	607
President's Scholars Program .....	607
Dean's Honors List .....	608
Departmental Honors Program .....	608
Honors at Graduation .....	608
Honors Societies .....	608

### International Programs

International Students .....	610
Study Abroad for U.S. Students .....	611
CSU International Programs .....	611
CSUF Exchange/Study Abroad .....	612
International Agreements .....	612

### CalStateTEACH

Courses .....	614
---------------	-----

### University Extended Education

Degree Credit Courses .....	616
Extension Programs .....	618

## ACADEMIC AFFAIRS SUPPORT

### Academic Affairs

Vice President for Academic Affairs .....	623
Academic Advisement Center .....	623
Academic Programs .....	623
Academic Senate .....	623
Center for Internships and Community Engagement .....	624
Distance Education .....	624
Enrollment Services/Admissions and Records .....	625
Faculty Affairs and Records .....	625
Faculty Development Center .....	626
Graduate Studies .....	626
Grants and Contracts .....	626
Information Technology .....	626
Institutional Research and Analytical Studies .....	627
International Programs .....	627
Library .....	627
University Extended Education .....	627

### Research Centers

California Desert Studies Center .....	629
Catalyst Center for the Advancement of Teaching and Learning Mathematics and Science.....	629
Center for Applied Biotechnology Studies .....	630
Center for Autism .....	630
Center for Boys and Men .....	630
Center for Cancer Disparities Research .....	630
Center for Children Who Stutter .....	630



Center for Community Collaboration .....	631
Center for Corporate Reporting and Governance .....	631
Center for Demographic Research .....	631
Center for Economic Education .....	631
Center for Entertainment and Tourism Communications .....	632
Center for Entrepreneurship .....	632
Center for Ethnographic Cultural Analysis .....	632
Center for Family Business .....	632
Center for Information Technology and Business Analytics .....	632
Center for Insurance Studies .....	632
Center for International Business .....	633
Center for International Partnerships in Education .....	633
Center for Leadership .....	633
Center for Maximizing Teacher Impact .....	633
Center for Oral and Public History .....	633
Center for Public Policy .....	634
Center for Remote Sensing and Environmental Analysis .....	634
Center for Research on Educational Access and Leadership .....	634
Center for Sport Performance .....	634
Center for Successful Aging .....	634
Center for Sustainability .....	635
Center for the Advancement of Responsible Youth Sports .....	635
Center for the Promotion of Healthy Lifestyles and Obesity Prevention .....	635
CSUF Archeological Research Facility .....	635
CSUF Institute of Gerontology .....	635
Decision Research Center .....	636
Dr. John D. Cooper Archaeology and Paleontology Center .....	636
Entertainment and Tourism Management Center .....	636
Fibromyalgia Research and Chronic Pain Center .....	636
Gianneschi Center for Nonprofit Research .....	636
Gravitational-Wave Physics and Astronomy Center .....	637
Hazel Miller Croy Reading Center .....	637
Health Promotion and Research Institute .....	637
Institute for Economic and Environmental Studies .....	637
Maxwell Center for International Communications and Media .....	637
Ocean Studies Institute/Southern California Marine Institute .....	637
Real Estate and Land Use Institute .....	638
Sales Leadership Center .....	638
SchoolsFirst Center for Creativity and Critical Thinking in Schools .....	638
Small Business Development Center .....	638
Small Business Institute .....	638
Social Science Research Center .....	638
South Central Coastal Information Center .....	639
Sport and Movement Institute .....	639
Tucker Wildlife Sanctuary .....	639
Twin Studies Center .....	639
<b>STUDENT AFFAIRS SUPPORT</b>	
<b>Student Affairs</b>	
Vice President for Student Affairs .....	642
Academic Appeals .....	642
Assistant Deans for Student Affairs .....	643
Athletic Academic Services .....	643
Career Center .....	643
Counseling and Psychological Services .....	644
Disabled Student Services .....	644
Educational Partnerships .....	644
Financial Aid .....	645
Guardian Scholars Program .....	645
Housing and Residence Life .....	645
Student Academic Services .....	645
Center for Academic Support in Engineering and Computer Science (CASECS) .....	646
Educational Opportunity Program .....	646
Intensive Learning Experience .....	646
Student Diversity Program .....	646
Student Retention Services .....	646
Student Support Services .....	646
Summer Bridge .....	646
Testing Services .....	646
Student Health and Counseling Center .....	647
University Learning Center .....	647
Women's Center/Adult Reentry/Veterans Student Services .....	647
<b>Student Life</b>	
Dean of Students Office .....	648
Judicial Affairs .....	648
Leadership and Multicultural Development .....	648
Student Information and Referral Center .....	649
New Student Orientation .....	649
Titan Week of Welcome .....	649
Campus Tours .....	649
Student Organization Resource Center .....	650
Volunteer and Service Center .....	650
<b>Associated Students, CSUF Inc.</b>	
Associated Students Government .....	650
Associated Students, Inc. Productions .....	651
Camp Titan .....	651
Children's Center .....	651
Legal Information and Referral .....	651
Titan Student Union .....	651
Rec Sports .....	653
<b>Intercollegiate Athletics</b>	
Coaches .....	654
Men's Intercollegiate Athletics .....	654
Women's Intercollegiate Athletics .....	654
Athletic Academic Services .....	655
<b>Resources</b>	
African American Resource Center .....	656
Anthropology Museum .....	656
Begovich Gallery .....	656
Campus Dining Services .....	656
Chicana and Chicano Resource Center .....	657
Daily Titan .....	657
Fullerton Arboretum .....	657
Grand Central Art Center .....	658
Herbarium .....	658
Mathematics Tutoring Center .....	658
Modern Language Laboratory .....	658
Opportunity Center for Science and Mathematics Students .....	658
Speech, Language and Hearing Clinic .....	658
Theatre and Dance Department Productions .....	659
Titan Communications .....	659
Titan Shops .....	659
Writing Center .....	660
<b>EMERITI</b> .....	661
<b>FACULTY AND ADMINISTRATION</b> .....	677
<b>INDEX</b> .....	705

# Academic Calendar

Please note: This calendar is subject to change and should not be construed as an employee work calendar.

## SUMMER SESSION 2013

### June 3

Monday ..... First day of classes

### July 4

Thursday ..... Independence Day – Campus Closed

### August 1

Thursday ..... Initial period for filing application for admission to the spring 2014 semester begins

### August 9

Friday ..... Last day of classes

## FALL SEMESTER 2013

### August 19

Monday ..... Academic year begins

### August 24

Saturday ..... First day of classes

### September 2

Monday ..... Labor Day – Campus Closed

### October 1

Tuesday ..... Initial period for filing application for admission to the fall 2014 semester begins

### October 14

Monday ..... Columbus Day – Campus Open

### November 11

Monday ..... Veterans Day Observed – Campus Closed

### November 25-December 1

Monday-Sunday ..... Fall Recess – No Classes  
Campus Open 11/25-27  
Campus Closed 11/28-29

### December 13

Friday ..... Last day of classes

### December 14-20

Saturday-Friday ..... Semester examinations

### December 21

Saturday ..... First day of Intersession classes

### December 25, 2013 – January 1, 2014

Wednesday-Wednesday .... Winter Recess – Campus Closed

## WINTER RECESS 2014

### January 1, 2014

Wednesday ..... New Year's Holiday – Campus Closed

### January 2

Thursday ..... Fall 2013 semester ends; Grades due

### January 17

Friday ..... Last day of Intersession classes

## SPRING SEMESTER 2014

### January 16

Thursday ..... Semester begins

### January 18

Saturday ..... First day of classes

### January 20

Monday ..... Martin Luther King, Jr. Day – Campus Closed

### February 17

Monday ..... Presidents' Day – Campus Closed

### March 31

Monday ..... Cesar Chavez Day – Campus Closed

### April 1 – April 6

Tuesday-Sunday ..... Spring Recess – No Classes;  
Campus Open

### April 7

Monday ..... Classes resume

### May 9

Friday ..... Last day of classes

### May 10-16

Saturday-Friday ..... Semester examinations

### May 17-18

Saturday-Sunday ..... Commencement Exercises

### May 23

Friday ..... Semester ends; Grades due

## CLASSES THAT MEET ON SATURDAYS AND/OR SUNDAYS WILL MEET ON THE FOLLOWING DATES:

Fall 2013:	Saturdays	Sundays	Spring 2014:	Saturdays	Sundays
August	24, 31	25	January	18, 25	19, 26
September	7, 14, 21, 28	1, 8, 15, 22, 29	February	1, 8, 15, 22	2, 9, 16, 23
October	5, 12, 19, 26	6, 13, 20, 27	March	1, 8, 15, 22, 29	2, 9, 16, 23, 30
November	2, 9, 16, 23	3, 10, 17, 24	April	12, 19, 26	13, 20, 27
December	7, 14*	8, 15*	May	3, 10*	4, 11*

\* Possible Final Examination

Calendar changes will be announced and posted on the CSUF website: [fullerton.edu](http://fullerton.edu)

Please note: This calendar is subject to change and should not be construed as an employee work calendar.

**SUMMER SESSION 2014**

**June 2**  
Monday ..... First day of classes

**July 4**  
Friday ..... Independence Day – Campus Closed

**August 1**  
Friday ..... Initial period for filing application for admission to the spring 2015 semester begins

**August 8**  
Friday ..... Last day of classes

**FALL SEMESTER 2014**

**August 18**  
Monday ..... Academic year begins

**August 23**  
Saturday ..... First day of classes

**September 1**  
Monday ..... Labor Day – Campus Closed

**October 1**  
Wednesday ..... Initial period for filing application for admission to the fall 2015 semester begins

**October 13**  
Monday ..... Columbus Day – Campus Open

**November 11**  
Tuesday ..... Veterans Day – Campus Closed

**November 24-29**  
Monday-Saturday ..... Fall Recess – No Classes  
Campus Open 11/24-26  
Campus Closed 11/27-28

**December 12**  
Friday ..... Last day of classes

**December 13-19**  
Saturday-Friday ..... Semester examinations

**December 20**  
Saturday ..... First day of Intersession classes

**December 25, 2014 – January 1, 2015**  
Thursday-Thursday ..... Winter Recess – Campus Closed

**WINTER RECESS 2015**

**January 1, 2015**  
Thursday ..... New Year’s Holiday – Campus Closed

**January 2**  
Friday ..... Fall 2014 semester ends; Grades due

**January 16**  
Friday ..... Last day of Intersession classes

**SPRING SEMESTER 2015**

**January 15**  
Thursday ..... Semester begins

**January 17**  
Saturday ..... First day of classes

**January 19**  
Monday ..... Martin Luther King, Jr. Day – Campus Closed

**February 16**  
Monday ..... Presidents’ Day – Campus Closed

**March 30 – April 5**  
Monday-Sunday ..... Spring recess – No Classes;  
Campus Open **except** on Tues.,  
March 31, Cesar Chavez Day

**March 31**  
Tuesday ..... Cesar Chavez Day – Campus Closed

**April 6**  
Monday ..... Classes resume

**May 8**  
Friday ..... Last day of classes

**May 9-15**  
Saturday-Friday ..... Semester examinations

**May 16-17**  
Saturday-Sunday ..... Commencement Exercises

**May 22**  
Friday ..... Semester ends; Grades due

**CLASSES THAT MEET ON SATURDAYS AND/OR SUNDAYS WILL MEET ON THE FOLLOWING DATES:**

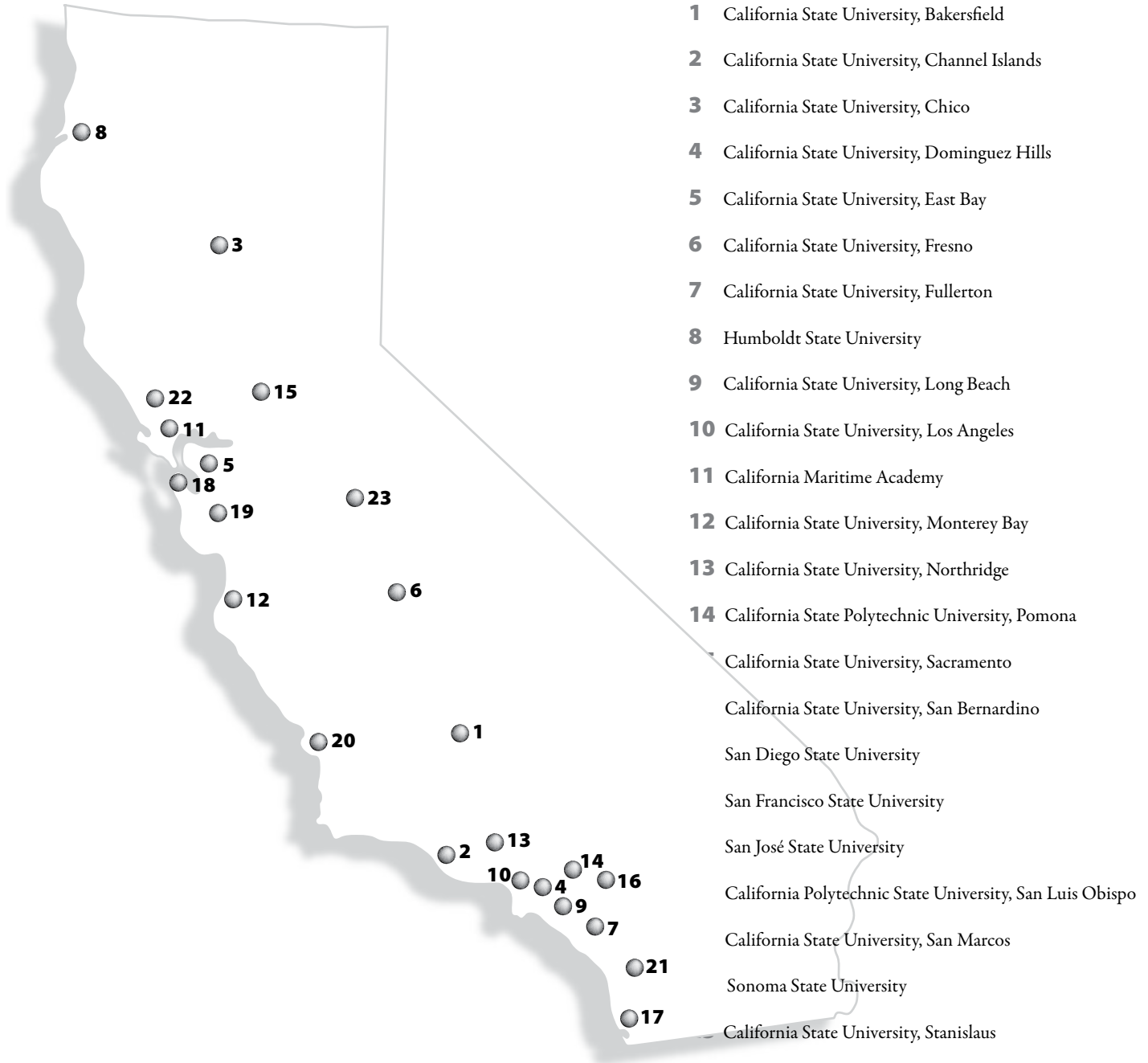
Fall 2014:	Saturdays	Sundays	Spring 2015:	Saturdays	Sundays
August	23, 30	24, 31	January	17, 24, 31	18, 25
September	6, 13, 20, 27	7, 14, 21, 28	February	7, 14, 21, 28	1, 8, 15, 22
October	4, 11, 18, 25	5, 12, 19, 26	March	7, 14, 21, 28	1, 8, 15, 22, 29
November	1, 8, 15, 22	2, 9, 16, 23	April	11, 18, 25	12, 19, 26
December	6, 13*	7, 14*	May	2, 9*	3, 10*

\* Possible Final Examination

Calendar changes will be announced and posted on the CSUF website: [fullerton.edu](http://fullerton.edu)



# The California State University



The individual California State Colleges were brought together as a system by the Donahoe Higher Education Act of 1960. In 1972, the system became the California State University and Colleges, and in 1982 the system became the California State University (CSU). Today the campuses of the CSU include comprehensive and polytechnic universities and, since July 1995, the California Maritime Academy, a specialized campus.

The oldest campus – San José State University – was founded in 1857 and became the first institution of public higher education in California. The newest – CSU Channel Islands – opened in fall 2002, with freshmen arriving in fall 2003.

Responsibility for the California State University is vested in the Board of Trustees, whose members are appointed by the governor. The trustees appoint the chancellor, who is the chief executive officer of the system, and the presidents, who are the chief executive officers of the respective campuses.

The trustees, the chancellor and the presidents develop systemwide policy, with implementation at the campus level taking place through broadly based consultative procedures. The Academic Senate of the CSU, made up of elected representatives of the faculty from each campus, recommends academic policy to the Board of Trustees through the chancellor.

Academic excellence has been achieved by the CSU through a distinguished faculty whose primary responsibility is superior teaching. While each campus in the system has its own unique geographic and curricular character, all campuses, as multipurpose institutions, offer undergraduate and graduate instruction for professional and occupational goals as well as broad liberal education. All campuses require a basic program of “General Education Requirements” for graduation regardless of the type of bachelor’s degree or major field selected by the student.

The CSU offers high-quality, affordable bachelor’s and master’s-level degree programs. Many of these programs are offered so that students can complete all upper-division and graduate requirements by part-time, late afternoon and evening study. In addition, a variety of teaching and school service credential programs are available. A limited number of doctoral degrees are offered jointly with the University of California and with private institutions in California. In 2005, the CSU was authorized to independently offer educational doctorate (Ed.D.) programs. In 2012, a consortium of CSU campuses – Fullerton, Long Beach and Los Angeles – were approved to jointly offer a Doctor of Nursing Practice degree.

Enrollment in fall 2011 totaled 427,000 students, who were taught by more than 21,000 faculty. The system awards about half of the bachelor’s degrees and a third of the master’s degrees granted in California. More than 2.7 million students have graduated from CSU campuses since 1961.

A recent economic report found that the CSU supports more than 150,000 jobs statewide, annually. The engine driving job creation is more than \$17 billion in economic activity that directly results from CSU-related spending that generates \$5.43 for every dollar the state invests. For more information, please see [calstate.edu/impact](http://calstate.edu/impact).



## THE CALIFORNIA STATE UNIVERSITY

Campuses of The California State  
University  
Trustees and Officers of The California  
State University  
Office of the Chancellor

## **CAMPUSES - THE CALIFORNIA STATE UNIVERSITY**

### **California State University, Bakersfield**

9001 Stockdale Highway  
Bakersfield, CA 93311-1022  
Dr. Horace Mitchell, President  
661-654-2782  
csub.edu

### **California State University, Channel Islands**

One University Drive  
Camarillo, CA 93012  
Dr. Richard Rush, President  
805-437-8400  
csuci.edu

### **California State University, Chico**

400 West First Street  
Chico, CA 95929-0722  
Dr. Paul J. Zingg, President  
530-898-4636  
csuchico.edu

### **California State University, Dominguez Hills**

1000 East Victoria Street  
Carson, CA 90747-0005  
Dr. Willie Hagan, Interim President  
310-243-3301  
csudh.edu

### **California State University, East Bay**

25800 Carlos Bee Boulevard  
Hayward, CA 94542  
Dr. Leroy M. Morishita, President  
510-885-3000  
csueastbay.edu

### **California State University, Fresno**

5241 North Maple Avenue  
Fresno, CA 93740  
Dr. John D. Welty, President  
559-278-4240  
csufresno.edu

### **California State University, Fullerton**

800 N. State College Boulevard  
Fullerton, CA 92831-3599  
Dr. Mildred Garcia, President  
657-278-2011  
fullerton.edu

### **Humboldt State University**

1 Harpst Street  
Arcata, CA 95521-8299  
Dr. Rollin C. Richmond, President  
707-826-4402  
humboldt.edu

### **California State University, Long Beach**

1250 Bellflower Boulevard  
Long Beach, CA 90840-0115  
Dr. F. King Alexander, President  
562-985-4111  
csulb.edu

### **California State University, Los Angeles**

5151 State University Drive  
Los Angeles, CA 90032  
Dr. James M. Rosser, President  
323-343-3000  
calstatela.edu

### **California Maritime Academy**

200 Maritime Academy Drive  
Vallejo, CA 94590  
Rear Admiral Thomas A. Cropper, President  
707-654-1000  
csum.edu

### **California State University, Monterey Bay**

100 Campus Center  
Seaside, CA 93955-8001  
Dr. Eduardo M. Ochoa, Interim President  
831-582-3330  
csumb.edu

### **California State University, Northridge**

18111 Nordhoff Street  
Northridge, CA 91330  
Dr. Dianne F. Harrison, President  
818-677-1200  
csun.edu

### **California State Polytechnic University, Pomona**

3801 W. Temple Avenue  
Pomona, CA 91768  
Dr. J. Michael Ortiz, President  
909-869-7659  
csupomona.edu

### **California State University, Sacramento**

6000 J Street  
Sacramento, CA 95819  
Dr. Alexander Gonzalez, President  
916-278-6011  
csus.edu

### **California State University, San Bernardino**

5500 University Parkway  
San Bernardino, CA 92407-2393  
Dr. Tomás D. Morales, President  
909-537-5000  
csusb.edu

### **San Diego State University**

5500 Campanile Drive  
San Diego, CA 92182  
Dr. Elliot Hirshman, President  
619-594-5200  
sdsu.edu

### **San Francisco State University**

1600 Holloway Avenue  
San Francisco, CA 94132  
Dr. Leslie E. Wong, President  
415-338-1111  
sfsu.edu

**San José State University**

One Washington Square  
 San Jose, CA 95192-0001  
 Dr. Mohammad H. Qayoumi, President  
 408-924-1000  
 sjsu.edu

**California Polytechnic State University, San Luis Obispo**

One Grand Avenue  
 San Luis Obispo, CA 93407  
 Dr. Jeffrey Armstrong, President  
 805-756-1111  
 calpoly.edu

**California State University, San Marcos**

333 S. Twin Oaks Valley Road  
 San Marcos, CA 92096-0001  
 Dr. Karen S. Haynes, President  
 760-750-4000  
 csusm.edu

**Sonoma State University**

1801 East Cotati Avenue  
 Rohnert Park, CA 94928-3609  
 Dr. Ruben Armiñana, President  
 707-664-2880  
 sonoma.edu

**California State University, Stanislaus**

One University Circle  
 Turlock, CA 95382-0299  
 Dr. Joseph F. Sheley, Interim President  
 209-667-3122  
 csustan.edu

**TRUSTEES AND OFFICERS OF THE CALIFORNIA STATE UNIVERSITY****Ex-Officio Trustees**

The Honorable Edmund G. Brown, Jr.  
 Governor of California  
 State Capitol, Suite 1173  
 Sacramento CA 95814

The Honorable Gavin Newsom  
 Lieutenant Governor of California  
 State Capitol, Sacramento CA 95814

The Honorable John Perez  
 Speaker of the Assembly  
 State Capitol, Sacramento CA 95814

The Honorable Tom Torlakson  
 State Superintendent of Public Instruction  
 1430 N. Street, Suite 5602, Sacramento CA 95814

Dr. Timothy P. White  
 Chancellor of the California State University  
 401 Golden Shore  
 Long Beach 90802-4210

**Officers of the Trustees**

The Honorable Edmund G. Brown, Jr.  
 President

Bob Linscheid  
 Chair

Christine Helwick  
 Secretary

Benjamin Quillian  
 Treasurer

**Appointed Trustees**

Appointments are for a term of eight years, except student, alumni and faculty trustees whose terms are for two years. Terms expire in the year in parentheses. Names are listed alphabetically.

Roberta Achtenberg (2015)  
 Bernadette Cheyne (2013)  
 Rebecca Eisen (2020)  
 Debra S. Farar (2014)  
 Kenneth Fong (2013)  
 Margaret Fortune (2016)  
 Lupe García (2020)  
 Steven Glazer (2019)  
 William Hauck (2017)  
 Bob Linscheid (2012)  
 Peter Mehas (2015)  
 Henry Mendoza (2016)  
 Lou Monville (2014)  
 Hugo Morales (2020)  
 Larry Norton (2020)  
 Jillian Ruddell (2013)  
 Glen Toney (2013)  
 Cipriano Vargas (2014)

Correspondence with Trustees should be sent:

c/o Trustees Secretariat  
 The California State University  
 401 Golden Shore  
 Long Beach, California 90802-4210

**OFFICE OF THE CHANCELLOR**

The California State University  
 401 Golden Shore  
 Long Beach, California 90802-4210  
 562-951-4000

Dr. Timothy P. White  
 Chancellor - CSU System

Mr. Benjamin Quillian  
 Executive Vice Chancellor and Chief Financial Officer

Dr. Ephraim Smith  
 Executive Vice Chancellor and Chief Academic Officer

Mr. Garret P. Ashley  
 Vice Chancellor, University Relations and Advancement

Ms. Gail Brooks  
 Vice Chancellor, Human Resources

Ms. Christine Helwick  
 General Counsel

Mr. Larry Mandel  
 University Auditor

# About the University



## ABOUT THE UNIVERSITY

Governance  
Mission and Goals  
Accreditations and Associations  
Academic Freedom and Responsibility  
History of the University  
Environment of the University  
The Campus and Its Buildings  
CSUF Irvine Campus  
CSUF Garden Grove Center  
Students of the University  
The Faculty  
Outstanding Professor Award  
CSU Fullerton Auxiliary Services Corporation  
Alumni Association of Cal State Fullerton  
Community Support Groups

## GOVERNANCE

Governance on the campus at California State University, Fullerton is the responsibility of the president and his administrative staff. Working closely with the president are a number of faculty and student groups that initiate, review, and/or recommend for approval, various University programs, policies and procedures. Although the president is vested with the final authority for all University activities, maximum faculty and staff participation in campus decision-making and governance has become traditional. Students also are actively involved, with student representatives included on almost all University, college and departmental committees and policymaking bodies.

## MISSION AND GOALS

### Mission Statement

Learning is preeminent at California State University, Fullerton. We aspire to combine the best qualities of teaching and research universities where actively engaged students, faculty and staff work in close collaboration to expand knowledge.

Our affordable undergraduate and graduate programs provide students the best of current practice, theory, and research, and integrate professional studies with preparation in the arts and sciences. Through experiences in and out of the classroom, students develop the habit of intellectual inquiry, prepare for challenging professions, strengthen relationships to their communities and contribute productively to society.

We are a comprehensive, regional University with a global outlook, located in Orange County, a technologically rich and culturally vibrant area of metropolitan Los Angeles. Our expertise and diversity serve as a distinctive resource and catalyst for partnerships with public and private organizations. We strive to be a center of activity essential to the intellectual, cultural and economic development of our region.

## GOALS

- To ensure the preeminence of learning
- To provide high-quality programs that meet the evolving needs of our students, community and region
- To enhance scholarly and creative activity
- To make collaboration integral to our activities
- To create an environment where all students have the opportunity to succeed
- To increase external support for University programs and priorities
- To expand connections and partnerships with our region
- To strengthen institutional effectiveness, collegial governance and our sense of community

## ACCREDITATIONS AND ASSOCIATIONS

California State University, Fullerton, is accredited by the Western Association of Schools and Colleges.



Questions about accreditation may be addressed to:

Western Association of Schools and Colleges  
985 Atlantic Avenue, Suite 100  
Alameda, CA 94501  
Phone: 510-748-9001  
Email: WASC\_SR@WASCSENIOR.ORG  
Internet: wascsenior.org

Other accreditation and association recognition includes:

AACSB International - The Association to Advance Collegiate  
Schools of Business - Accounting Program

AACSB - The Association to Advance Collegiate Schools of  
Business - Business Programs

Accrediting Council on Education in Journalism and Mass  
Communications

American Alliance of Museums

American Association for State and Local History

American Association of State Colleges and Universities

American Chemical Society

American College of Nurse-Midwives Division of Accreditation,  
8403 Colesville Rd., Suite 1550, Silver Spring MD 20910

American Council on Education

Association of Public and Land-Grant Universities

California Commission on Teacher Credentialing

Commission on Accreditation of Athletic Training Education

Commission on Collegiate Nursing Education

Computing Accreditation Commission of ABET,  
111 Market Place, Suite 1050, Baltimore, MD 21202-4012  
telephone – 410-347-7700

Council for Accreditation of Counseling and Related Educational  
Programs

Council for Advancement and Support of Education

Council for Standards in Human Service Education

Council of Graduate Schools

Council on Academic Accreditation of the American Speech-  
Language-Hearing Association

Council on Accreditation of Nurse Anesthesia Educational Programs

Council on Education of Public Health

Council on Social Work Education

Engineering Accreditation Commission of ABET,  
111 Market Place, Suite 1050, Baltimore, MD 21202-4012  
telephone – 410-347-7700

Hispanic Association of Colleges and Universities

National Association of Schools of Art and Design

National Association of Schools of Dance

National Association of Schools of Music

National Association of Schools of Public Affairs and Administration

National Association of Schools of Theatre

National Council for Accreditation of Teacher Education

Nurse Anesthesia Council on Accreditation

Orange County Business Council

Southern California Consortium on International Studies

Western Association of Graduate Schools

## **ACADEMIC FREEDOM AND RESPONSIBILITY**

The Academic Senate of California State University, Fullerton endorses the American Association of University Professors 2009 Statement of Professional Ethics (University Policy Statement 230.000).

## **HISTORY OF THE UNIVERSITY**

In 1957, Cal State Fullerton became the 12th State College in California to be authorized by the Legislature. The following year a site was designated in northeast Fullerton. It was purchased in 1959, when Dr. William B. Langsdorf was appointed as founding president, the first staff was selected and plans for opening the new college were made. Orange County State College started classes for 452 full- and/or part-time students in September, 1959, using leased quarters for its administrative offices on the Fullerton Union High School campus and for its classrooms at Fullerton's Sunny Hills High School. In the fall of 1960, the college opened classes on its own campus, where it occupied 12 temporary buildings. The name changed to Orange State College in July 1962, to California State College at Fullerton in July 1964, to California State College, Fullerton in July 1968 and to California State University, Fullerton in June 1972. The first permanent building, the six-story Letters and Science Building (now known as McCarthy Hall), was occupied in 1963.

Today, there is much dramatic evidence of additional, rapid growth. A number of new buildings have been completed, and enrollment has climbed to more than 37,000. Since 1963 the curriculum has expanded to include lower-division work, graduate programs including two doctorates, as well as numerous credential and certificate programs.

The Donahoe Higher Education Act of 1960 established the California State Colleges as a system under an independent Board of Trustees, redefined the functions of the State Colleges, and related them to both the community colleges and the University of California system.

In May 1971, Dr. L. Donald Shields, who had served as acting president for seven months, was appointed the second president of Cal State Fullerton. Dr. Miles D. McCarthy became acting president in January 1981; Dr. Jewel Plummer Cobb took office as the third president in October 1981; Dr. Milton A. Gordon was appointed the fourth president in August 1990; and in June 2012, Dr. Mildred García became the fifth CSU Board of Trustees-appointed president of Cal State Fullerton.

## ENVIRONMENT OF THE UNIVERSITY

Fullerton, a city of more than 135,000 inhabitants, is located in North Orange County, about 30 miles southeast of central Los Angeles. It is part of the Southern California population center and within easy freeway access of all the diverse natural and cultural attractions of this region.

Orange County, with an area of 798.3 square miles, is the 47th in size of California's 58 counties, but it is the third-largest county in population (more than 3.1 million) and the sixth-most populous in the nation. Orange County has more than doubled its population over the last four decades, and it will continue to grow in the decades to come.

Today, there co-exists an interesting mixture of the old and new economic and life styles in Orange County. Underneath the soil, archeologists and bulldozers uncover traces of the hunting and gathering Indian bands who flourished at least as early as 4,000 years ago in what was a benign and bountiful region. More visible traces remain of the Spanish and Mexican periods and cultures: Mission San Juan Capistrano, which began the agricultural tradition in Orange County, and subsequent adobes from the great land grants and ranches that followed. Additionally, both customs and many names persist from this period and so does some ranching. The architectural and other evidences of the subsequent pioneer period are still quite visible: farmsteads, old buildings from the new towns that were established in the late 1800s, mining operations, and traces of early resort and other types of promotional activities. For about 100 years, farming was the main economic activity with products such as grapes, walnuts, vegetables and oranges replacing the older wheat and cattle ranches. Today, agriculture still is very important. Orange County ranks high among California's counties in mineral production with its oil, natural gas, sand and gravel, and clay mining and processing activities.

The extensive development of the 42 miles of beaches in Orange County and the development of such attractions as the Disneyland Resort, Knott's Berry Farm, the Laguna Festival of Arts and Pageant of the Masters, the Honda Center, Angel Stadium, the Anaheim Convention Center and the Orange County Performing Arts Center continue to make tourism an increasingly important activity.

So does the Mediterranean-type climate, with rainfall averaging 14 inches per year, and generally mild days (either freezing or 100-degree temperatures are uncommon) with frequent morning fog during the summer. Both downtown Los Angeles and the Pacific Ocean can be reached by car in half an hour, and mountain and desert recreation areas are as close as an hour's drive from the campus.

## THE CAMPUS AND ITS BUILDINGS

Once part of a vast orange grove, Cal State Fullerton's attractively landscaped main campus now consists of approximately 240 acres bounded on the south by Nutwood Avenue, on the west by State College Boulevard, on the north by Yorba Linda Boulevard and on the east by the Orange Freeway (57).

The portion of Orange County immediately surrounding the campus is predominantly suburban; it includes housing tracts, apartment complexes, shopping centers and industrial parks.

Other educational institutions also are part of the immediate environment. The Southern California College of Optometry opened in the spring of 1973. It is just north of Cal State Fullerton.

To Cal State's immediate south is Hope International University, a liberal arts school with a Bible emphasis, where students started classes in the fall of 1973. Western State University College of Law occupied its new campus to the immediate west of Cal State in January 1975.

In fall 2012, the Cal State Fullerton campus property expanded by 3.6 acres with the acquisition of property and two buildings currently housing the Western State University College of Law, which is located at the corner of Dorothy Lane and State College Boulevard. The four-story and two-story buildings together provide approximately 86,500 square feet of space that will be occupied by CSUF in the future.

The Cal State Fullerton campus itself has an efficient urban layout of facilities developed to serve a predominantly commuting public. The University's modern buildings were planned so that no student needs more than 10 minutes to go from one class to another. The campus is surrounded with landscaped parking areas.

The first permanent building, the Letters and Science Building, was occupied in 1963. This imposing structure, master planned to serve ultimately as a facility for undergraduate and graduate science instruction and research, has been used to house other programs until they could warrant new facilities of their own. This building is now called Miles D. McCarthy Hall.

Since 1963, growth has been rapid. The Performing Arts Center was completed in 1964, the Physical Education Building in 1965, the Library Building in 1966, the Commons in 1967, the Humanities-Social Sciences Building and Visual Arts Center in 1969, William B. Langsdorf Hall (Administration- Business Administration) and the Engineering Building in 1971, the Student Health Center in 1974, the Education-Classroom Building and University Center in 1976, an addition to the Visual Arts Center in 1979, the Jewel Plummer Cobb Residence Halls and the Charles L. and Rachael E. Ruby Gerontology Center in 1988, and the Fullerton Marriott and the Computer Science Building in 1989. The Ruby Gerontology Center was the first building on campus financed solely by contributed funds; the Fullerton Marriott, a full-service hotel, resulted from a joint venture involving the Marriott Corp., the University and the city of Fullerton.

An expansion of the Titan Student Union (formerly known as the University Center) and the Titan Sports Complex, featuring the multipurpose 10,000-seat Titan Stadium, baseball pavilion, track and tennis courts, were completed in 1992. The Titan Student Union houses a 1,200-seat pavilion, small theater, food court, pub, bowling alley and conference rooms. The five-story University Hall, with classrooms, faculty offices, and student and academic support services, was occupied in 1993, followed by the two-story Science Laboratory Center in 1994. The Science Laboratory Center was renamed and dedicated as Dan Black Hall in fall 2006. A four-story addition to the University Library was completed in 1996, and the entire complex was dedicated as the Paulina June & George Pollak Library in 1998.

The 10-story College Park building on Nutwood Avenue provides additional classrooms and office space for University staff and faculty members.

A 71,000-square-foot expansion of the Kinesiology and Health Science Building was completed in 2003. The addition includes the Wellness Center for Successful Aging, practice gymnasium, seminar rooms, faculty offices and a 125-seat lecture hall. A new 109,000-square-foot Performing Arts Center opened in January 2006 and was named the Joseph A.W. Clays III Performing Arts Center in September 2008. The complex features venues that include an 800-seat concert hall, 250-seat thrust-stage theater and a 150-seat black box theater. Three parking structures – completed in 2004, 2006 and 2010 – provide on-campus parking for about 5,500 vehicles, expanding the overall number of parking spaces on campus to nearly 12,000.

Steven G. Mihaylo Hall, home of the Mihaylo College of Business and Economics, opened in fall 2008. The five-story, 195,000-square-foot facility provides a state-of-the-art learning environment, including technologically advanced classrooms and lecture halls, computer labs, and houses the college's renowned centers and institutes. Also completed in 2008 was the Student Recreation Center. The two-story, 95,000-square-foot facility features a rock climbing wall, multicourt gymnasium, one of the largest cardio/weight rooms on a West Coast campus, an outdoor leisure and lap pool, multimedia cardio room and indoor track.

Cal State Fullerton's on-campus student-resident population more than doubled with the completion of the new \$143-million residence hall complex in summer 2011, adding 1,064 beds to the existing 880. The complex includes a state-of-the-art dining facility, recreational and study facilities on each floor, smart classrooms, a convenience store, laundry and mail facilities, new complex coordinator and faculty-in-residence apartments, to name a few. Other new additions to campus in 2010-2011 included a new home for University Police, as well as a new and expanded Children's Center. The new \$8.7-million facility, built for the Associated Students, Inc. program, offers a program accredited by the National Association for the Education for Young Children.

In the northeast corner of the campus is the Fullerton Arboretum, which was dedicated in the fall of 1979 in a joint venture with the city of Fullerton. The 26-acre botanical garden is a living museum of rare plants from around the world. The ecologically arranged botanical collection depicts habitats from the desert to the tropics. With its ponds, streams and wildlife, it offers a tranquil retreat from urban life. In spring 2006, the University welcomed the opening of the Fullerton Arboretum Visitor Center and the Orange County Agricultural and Nikkei Heritage Museum, the campus's first "green" building. The Fullerton Arboretum also is home to Heritage House, a restored 19th-century dwelling, and serves as a cultural museum for North Orange County.

Cal State Fullerton is one of the most energy-efficient campuses anywhere, and has been since the early 1990s. The University has been honored three times by the University of California/California

State University Energy Efficiency Partnership Program including "Best Overall Sustainable Design" awards for the Student Recreation Center and the Fullerton Arboretum Visitor Center and Orange County Agricultural and Nikkei Heritage Museum. The awards recognize reduced use of natural resources during construction and ongoing energy conservation efforts throughout the life of new buildings and major renovations. Water savings, sustainable site development, energy efficiency, materials selection and indoor environmental quality are among the key elements considered in the design, construction and operation of green buildings. The Student Recreation Center achieved a Gold rating by the Leadership in Energy and Environmental Design (LEED) Green Building Rating System, which is the nationally accepted benchmark. Mihaylo Hall, the Children's Center and the University Police building operate at a LEED Silver level. Most notably, the new Student Housing complex achieved a rare Platinum LEED rating.

The ample freeway and surface street accommodations that approach the main entrance to the University's campus also provide comparatively easy access to the great and diverse learning resources available in Southern California: many other colleges and universities; museums, libraries and art galleries; zoos; and the wide variety of economic, governmental, social, and cultural activities and experiences that may be found in this dynamic and complex region of California and the United States.

Information concerning the instructional, laboratory and other physical facilities that relate to the academic program may be obtained from the Office of Facilities Planning and Management.

## **CAL STATE FULLERTON – IRVINE CAMPUS**

The Irvine Campus is a branch campus of California State University, Fullerton. The campus is located approximately 21 miles from the Fullerton Campus. It serves as a regional center for meeting the higher educational needs of Central and South Orange County. Students who plan to attend the Irvine Campus must be admitted to California State University, Fullerton through the regular admission process. Applications for admission to the University are available on the web at [csumentor.edu](http://csumentor.edu).

Dean Susan M. Cooper and Associate Dean Van Muse work with the faculty and staff to provide an efficient yet personal environment at their facility located in the Irvine Spectrum. The Irvine Campus offers a small number of lower-division courses, several upper-division courses, post-baccalaureate and graduate-level courses. Professional degrees are also offered through University Extended Education. They include: MBA, M.S. in Taxation and M.S.W.

The Irvine Campus offers 23 smart classrooms with state-of-the-art technology including three Dell computer labs and a Macintosh lab. In addition, there are two conference rooms, a spacious multipurpose room, open lab, library, bookstore, Titan Student Union, fitness center, Student Affairs service center and Admissions, Registration and Cashiering.

PRactical ADvantage Communications is a student-run public relations and advertising agency at the Irvine Campus. With support from faculty advisers, the agency provides opportunities for students to develop and implement advertising and public relations campaigns for local for-profit and nonprofit businesses and organizations, as well as for department programs and student organizations at CSUF. In addition to PRactical ADvantage, the Irvine Campus also has a three-bed Nursing Simulation Lab that provides nursing students with hands-on training to prepare for their clinical experiences.

The Student Affairs office supports students seeking a high quality education and the personal attention on which the CSUF Irvine Campus has built its reputation. As a resource for admitted CSUF students, staff and faculty, Student Affairs provides student services such as academic advisement, financial aid, disabled student services, career counseling, personal counseling, tutoring/study groups, student engagement and CSUF Associated Students, Inc. sponsored events. We invite you to visit our office and explore the variety of services available to assist you in your educational achievements.

Academic Advising provides students with the necessary information to make sound academic decisions and educational plans. Advisers assist students with information about graduation requirements and course selection. Prospective students who wish to transfer to the University also have the option of meeting with a transfer adviser to discuss University requirements for admission.

Financial Aid at the Irvine Campus assists students in the process of applying for financial aid and finding ways to meet educational expenses. Financial aid is designed to assist students in paying basic educational costs for eligible certificate and degree programs. The Irvine Campus offers the Shea Home scholarship to students who are actively involved at the branch campus. This scholarship is available only to students who attend classes at Irvine and is awarded each semester.

Students at the Irvine Campus have many opportunities to get involved in curricular and co-curricular experiences. These experiences foster collaborative relationships, professional success, a vibrant campus life, active civic participation and engaged alumni. Curricular and co-curricular experiences affirm the University's commitment to student engagement in diverse learning opportunities that positively contribute to students' success. Activities such as ASI Productions, Accounting Society speaker events, Business Development and Entrepreneurship Club, Irvine Student Advisory Committee, student newsletter, and peer tutoring are available for students to increase their on campus involvement.

The Irvine Campus branch of the Pollack Library provides information and access to high quality resources to meet the instructional and research needs of Irvine students, faculty and staff. The facility includes course reserves, study rooms, computer workstations, bibliographic instruction classroom, a reference librarian and an online reference service. Easy access to the 100-plus databases, NetLibrary, online library catalog, online chat reference and document delivery are all available to Irvine Campus students.

The CSUF, Irvine Campus is located at 3 Banting, Irvine CA 92618. For additional information including campus hours, administration and events please call 657-278-1600 or refer to the Irvine Campus website at [fullerton.edu/irvinecampus/](http://fullerton.edu/irvinecampus/).

### **CAL STATE FULLERTON GARDEN GROVE CENTER**

Classes are offered in the heart of Orange County at CSUF Garden Grove Center. The center opened in 1998 as part of University Extended Education's mission to extend the resources of Cal State Fullerton into the community. The facility is part of the Garden Grove Higher Education Center near the civic center.

The center is home to the M.S. in Counseling-Garden Grove program that features evening classes. In addition, academic credit classes are broadcast to the Garden Grove Center from the Fullerton campus via Interactive Televised Instruction (ITI) for easy access to students who live or work in central Orange County. University Extended Education (UEE) certificate classes for professional development are also offered in a wide variety of areas, with classes conveniently scheduled in the evening or on weekends. The CSUF Garden Grove Center is located at 1290 Euclid Street.

### **STUDENTS OF THE UNIVERSITY**

Much of the distinctive character and learning atmosphere of any campus comes from the nature and vitality of its students. Diversity, the synthesis of academic study with work and family interests, and strong records of participation and achievement are hallmarks of the student body at Cal State Fullerton.

The University is primarily a community-based institution, with three on-campus residence facilities. The majority of our students live in Orange County. Seventy-three percent of all students take 12 or more hours of coursework each semester. Of the fall 2012 new undergraduate students, 46 percent came from California public high schools, 4 percent from California private high schools, 46 percent came from California community colleges, 0.6 percent from other Cal State campuses, 0.5 percent from other California colleges and universities, and 3 percent from other states or other countries. The fall 2012 new graduate students came from Cal State University campuses (53 percent), other California colleges and universities (25 percent), and other states or other countries (22 percent).

The student body is 12 percent first-time freshmen, 15 percent other lower division, 58 percent upper division, and 14 percent graduate levels. Fifty-seven percent of all students are women. The median age of all students is 22; undergraduates have a median age of 21, while graduate students have a median age of 27. Course offerings during the day and at night provide our students with flexibility in their schedules. Most students choose to attend during the daytime.

Virtually all upper-division and graduate students have declared a major field of study. Fifteen percent of our lower-division students are in the process of exploring different fields prior to declaring a major. During 2011-2012, 6,724 undergraduates received their baccalaureate degrees, 1,565 graduates received their master's degrees, and 19 graduates received their Ed.D. degrees.

## THE FACULTY

Central to the effectiveness of any institution of higher learning is the quality and dedication of its individual faculty members to teaching and scholarship.

In the fall of 2011, there were 880 full-time faculty and administrators and 955 part-time faculty members teaching on the campus. Almost all the full-time faculty had some previous college or university teaching experience before coming to Fullerton. Faculty members also have a wide variety of scholarly experiences and creative activities. Eighty-seven percent of the full-time faculty have earned their doctoral degrees.

Criteria for selection to the faculty include mastery of knowledge in an academic specialty, demonstrated skill and experience in teaching, and continuing interest in scholarly study and research. Retention and promotion criteria also include service to the University and community.

Information concerning the faculty and other personnel may be obtained from the Office of Faculty Affairs and Records.

## OUTSTANDING PROFESSOR AWARD

Each year the University selects a faculty member to receive the CSUF Outstanding Professor Award

Below are the names of all professors who have received the CSUF Outstanding Professor Award. Those with an asterisk were also honored with the Statewide Outstanding Professor Award, an honor which was conferred annually on two system faculty members by the Trustees of the California State University until 1995.

<i>Year</i>	<i>Name</i>	<i>Subject</i>
1963-64	Donald Stanley Tull	Marketing
1964-65	Miles Duffield McCarthy*	Biology
1965-66	Giles Tyler Brown	History
1966-67	Gustave Bording Mathieu	French/German
1967-68	Norman Townsend-Zellner	Economics
1968-69	John Brown Mason	Political Science
1969-70	No award given	
1970-71	Loh Seng Tsai	Psychology
1971-72	Richard C. Gilbert	Mathematics
1972-73	Herbert C. Rutmiller	Quantitative Methods
1973-74	Fred M. Johnson	Physics
1974-75	Willis E. McNelly*	English
1975-76	Donald E. Lagerberg	Art
1976-77	Sidney Klein	Economics
1977-78	Charles G. Bell	Political Science
1978-79	Bruce H. Weber	Chemistry
1979-80	Michael H. Horn	Zoology
1980-81	Donald A. Sears	English and Linguistics
1981-82	Joyce E. Pickersgill	Economics
1982-83	Carl C. Wamser	Chemistry
1983-84	Corinne S. Wood	Anthropology
1984-85	Maria C. Linder	Chemistry
1985-86	Charles C. Lambert	Zoology
1986-87	Glenn M. Nagel	Chemistry
1987-88	Harris S. Shultz*	Mathematics
1988-89	Warren A. Beck	History
1989-90	Roger Nanes	Physics
1990-91	Gerald F. Corey	Human Services/ Counseling
1991-92	Michael H. Birnbaum	Psychology
1992-93	David L. Pagni*	Mathematics

1993-94	Keith O. Boyum	Political Science
1994-95	Carol P. Barnes	Elementary and Bilingual Education
1995-96	Mario Martelli	Mathematics
1996-97	Frank G. Cummings III	Art
1997-98	John A. Olmsted	Chemistry
1998-99	George A. Marcoulides	Management Science/ Information Systems
1999-00	Jane V. Hall	Economics
2000-01	Hallie Yopp Slowik	Elementary, Bilingual, and Reading Education
2001-02	Albert W. Flores	Philosophy
2002-03	Steven N. Murray	Biological Science
2003-04	Richard L. Wiseman	Human Communication Studies
2004-05	Nancy L. Segal	Psychology
2005-06	Zvi Drezner	Information Systems and Decision Sciences
2006-07	Chandrasekhar Putcha	Civil and Environmental Engineering
2007-08	Stella Ting-Toomey	Human Communications Studies
2008-09	Mohinder Grewel	Electrical Engineering
2009-10	Marcelo Tolmasky	Biology
2010-11	Martin V. Bonsangue	Mathematics
2011-12	John A. Bock	Anthropology

## CSU FULLERTON AUXILIARY SERVICES CORPORATION (ASC)

The CSU Fullerton Auxiliary Services Corporation was established and incorporated as a not-for-profit corporation in October 1959. The ASC is an auxiliary organization of the University established to provide essential student, faculty and staff services that cannot be provided from state appropriations. It supplements University programs and activities by assisting the University in fulfilling its purposes and in serving the people of the State of California, especially those in the immediate Fullerton area.

The ASC develops and administers research and educational grants and contracts; conducts retail operations including bookstore, food service and vending on campus; and administers various educationally-related functions and programs, such as the Artist Village and the purchase of the College Park and Western State College of Law buildings.

The ASC's overall policies are administered by a Board of Directors composed of members of the University faculty, administration and students, as well as prominent community leaders.

### Board of Directors

Chair, Ted Bremner*
Vice Chair, Ron Rangel*
Secretary, Robert Hall*
Rosalina Davis*
Theresa Harvey
Zeke Luna*
Tom Meyer
ASC Executive Director



ASC Chief Financial Officer  
CSUF President  
Provost/Vice President, Academic Affairs  
Vice President, Administration and Finance  
Vice President, Student Affairs  
Vice President, University Advancement  
Academic Administrator nominated by Council of Deans  
Academic Senate Chair plus three faculty appointees  
ASI President plus two student appointees  
Director, Office of Grants and Contracts

---

\*Community Member

### **CAL STATE FULLERTON ALUMNI ASSOCIATION**

The Cal State Fullerton Alumni Association is a not-for-profit auxiliary organization of the University that represents the University's more than 215,000 alumni and provides ways for current students and alumni to be involved with campus initiatives and activities. In addition, the association provides students and graduates with networking, educational and social activities. The association provides many programs and services to the entire alumni community including chapter outreach, alumni communications and a dues-paying membership program. Members receive exclusive benefits and services such as career-building tools, access to all 23 CSU campus libraries and the Titan Recreation Center, invitations to members-only events, discounts to the Titan bookstore and campus activities, discounted group insurance and more. The most important benefit of being a member of the CSUF Alumni Association, however, is the opportunity to be part of an active and engaged Titan network.

The George G. Golleher Alumni House is the focal point of alumni activity on campus where alumni, students, faculty and staff engage in a variety of activities – everything from pre-game barbeques, wine events, retreats, receptions and workshops.

Cal State Fullerton students are considered alumni when they have successfully completed 12 units of credit. We invite all students and alumni to participate in alumni association sponsored activities. For more information please contact 657-278-2586 (ALUM) or visit [csufalumni.com](http://csufalumni.com)

### **COMMUNITY SUPPORT GROUPS**

California State University, Fullerton welcomes and encourages the development and activities of volunteer organizations committed to enriching University life. The expertise and efforts of dedicated volunteers enhance the University's academic excellence. Annually, each organization nominates a member volunteer who is honored at a luncheon each spring.

The Cal State Fullerton Coordinating Council of Support Groups consists of representatives from all volunteer organizations on campus. The council coordinates communication between the volunteer organizations and the University. Further information

about the council may be obtained from the Office of the Vice President for University Advancement, College Park 850, at 657-278-4796.

### **Art Alliance**

The Art Alliance encourages excellence in the arts, particularly through the educational curriculum of the University's Art Department. Organized in 1967, the alliance assists in financing gallery exhibitions, participates in the acquisition of campus art works, and annually awards scholarships and graduate research grants. Art Alliance members host special exhibit tours and receptions, trips to museums and artists' studios, and staff the main gallery during open hours.

### **College Advisory Councils and Boards**

Many academic departments and colleges are supported by advisory councils and boards, which are composed of community and campus leaders and alumni who are committed to sharing their expertise and providing support to individual colleges within the University.

### **Osher Lifelong Learning Institute (OLLI)**

For three decades, Cal State Fullerton's learning in retirement program has offered individuals who are retired, semi-retired or approaching retirement age an opportunity to enjoy experiential learning in classes for an active, healthy life. The Osher Lifelong Learning Institute at California State University, Fullerton (OLLI-CSUF) is a nationally recognized, self-supported organization offering a wide range of programs that are created and directed by its many talented members. This organization was founded as Continuing Learning Experience (CLE) in 1979.

For an annual membership fee that includes parking, OLLI-CSUF members enjoy the University setting and many student privileges. Programs include self-directed study groups, educational lectures, discussion groups, computer education, arts workshops, physical activities, special events, social activities and travel opportunities. Select classes, including Transitions in Retirement Essentials, are open to the public.

OLLI-CSUF committees respond to requests of the membership in determining offerings each semester. While members learn from each other, they also learn from community leaders, University professors and other leading authorities.

The OLLI-CSUF office is housed in the Ruby Gerontology Center, a research and conference facility built with private funds raised in large part from members of this outstanding program.

### **Emeriti**

The Emeriti of California State University, Fullerton, is a formal association of all persons awarded emeritus status by the president of CSUF. The emeriti, as an association, exists to promote the welfare of California State University, Fullerton; to enhance the continuing professionalism of the emeriti; to provide for the fellowship of the members; and awards two student scholarships each year. Through affiliation with the system-wide CSU emeriti organiza-

tion, California State University Emeritus and Retired Faculty Association, emeriti concerns are presented to all branches of the government and the Chancellor's Office.

### **Friends of the Fullerton Arboretum**

Friends of the Fullerton Arboretum support the 26-acre botanical garden located on the northeast corner of campus. The Friends coordinate the work of the many volunteers needed to maintain the gardens, programs and events. Friends host tours of the Arboretum and Heritage House museum, a turn-of-the-century residence listed in the National Register of Historic Places and the Inventory of California Historic Sites. Through plant sales, facility rentals and special events, the Friends contribute operating monies for the Arboretum and fund student scholarships.

### **MAMM Alliance for the Performing Arts**

The MAMM Alliance supports excellence in performing arts programming for the CSUF College of the Arts. Originally organized in 2001 as a foundation in honor of the late philanthropist Marcy Arroues Mulville, the Alliance joined Cal State Fullerton in 2006. During her lifetime, Marcy Arroues Mulville was credited with founding, supporting and advancing more than 26 nonprofit organizations, starting with Cal State Fullerton, where she founded the Music Associates. She was a key figure in the early years of the Pacific Symphony Orchestra and donor to the CSUF's Performing Arts Center.

The Alliance's mission and purpose includes underwriting legendary guest artist performances, royalty support for major productions, guest artist solo performances with student ensembles, professional ensembles and artist residencies.

### **Music Associates**

Music Associates at California State University, Fullerton, contributes to the Department of Music through funding of student scholarships and performance awards that recognize excellence in vocal and instrumental performance and that encourage and develop the technical and creative skills of talented and dedicated music students. In fact, Music Associates contributed \$50,000 to the Music Department for scholarships in 2011 and 2012.

Music Associates is a volunteer organization that is totally dependent upon contributions received through membership dues, private donations and fundraising event revenue. The organization also holds a Concerto/Aria Competition annually, and awards \$3,300 to the winners.

Music Associates members attend campus performances, sponsor the annual "Carol Candlelight Dinner Concert" and the spring "Music and Magic Luncheon" fundraisers that feature the University Singers and performances by scholarship winners.

### **Patrons of the Library**

Community members, alumni and faculty and staff members interested in enhancing the excellence of the Pollak Library belong to Patrons of the Library. The group sponsors exhibits and operates a book sale center in conjunction with the Emeriti. Funds raised

through book sales, dues and donations support the augmentation of library holdings and facilities.

During the academic year, Patrons sponsor a variety of activities, including field trips to libraries and other cultural venues, lectures by authors and local journalists, and a monthly book discussion group. Membership in the Patrons at all levels includes library borrowing privileges. Discounted memberships are offered for faculty, staff, Emeriti and students.

### **Reading Educators Guild**

Graduates who earn a Master of Science in Education with a concentration in Reading and other interested individuals are eligible for membership in the Reading Educators Guild, one of the oldest alumni support groups on the CSUF campus. Working in close relationship with the Reading Department, the Guild provides service as a professional development and networking organization for reading educators. REG also provides support for the Reading Department in a variety of ways, including the awarding of scholarships to both Reading Center and graduate students. Throughout the school year, the Guild holds various activities, lectures and conferences, promoting effective reading instruction.

### **Titan Athletics Club**

Fullerton Athletics is strong because alumni, parents and fans work together to keep our student-athletes competitive. There is no better way to do that than through the Titan Athletics Club.

The Titan Athletics Club was founded to organize the Cal State Fullerton Athletic Department's fundraising efforts, with the mission of providing financial support to enhance the experiences of our student-athletes.

Support from alumni, parents and fans helps to sustain Cal State Fullerton's commitment to improving our facilities, attracting and retaining outstanding coaches, and providing an environment that will make Fullerton the first choice for premier student-athletes.

Every gift helps to build a lasting foundation for excellence in Cal State Fullerton Athletics.

For more information, contact the Titan Athletics Club office at 657-278-4407 or [fullerton.edu/tac](http://fullerton.edu/tac).

### **Tucker Wildlife Sanctuary**

Tucker Wildlife Sanctuary is a 12-acre education center and nature preserve in Modjeska Canyon, owned by California State University, Fullerton and operated by the College of Natural Sciences and Mathematics. Its mission is to promote science and environmental education and preserve local native habitat and wildlife. While open to the public 9 a.m. - 4 p.m. Tuesday through Sunday, Tucker also provides a unique field research opportunity for college and University students and is a field trip destination for K-12 schools. Its school programs are built on the California State Standards for Science Education. Admission is free and naturalist-led tours are available for \$6 per person. For reservations, call 714-649-2760. For more information, visit our website at [tuckerwildlife.org](http://tuckerwildlife.org).

# Administration

## EXECUTIVE DIVISION

Mildred García, *President*

Ann Camp, *Chief of Staff*

Vacant, *Financial Manager*

Cheryl von Mirbach, *Presidential Assistant*

Sara Mouw, *Receptionist*

Sandy Quintero, *Confidential Assistant*

Leticia Stotler, *Special Events Coordinator and University House Manager*

Monique Shay, *University Counsel*

Danielle García, *Assistant to the University Counsel*

## ACADEMIC AFFAIRS

José Cruz, *Provost/Vice President for Academic Affairs*

Davida Hopkins-Parham, *Executive Assistant to the Provost/Vice President*

Edward Sullivan, *Assistant Vice President for Institutional Research and Analytical Studies*

Lisa Kopecky, *Assistant Vice President of Academic Operations and Finance*

Jennifer Faust, *Associate Vice President, Academic Affairs*

Robin Graboyes, *Director, Faculty Affairs and Records*

Chris Renne, *Director, Faculty Development Center*

## Enrollment Services/Admissions and Records

Nancy Dority, *Assistant Vice President for Enrollment Services*

Melissa Whatley, *Registrar*

Jessica Wagoner, *Director of Admissions*

Dawn Valencia, *Director, University Outreach*

Vacant, *Director, Information Technology*

## Academic Programs

Dorota Huizinga, *Associate Vice President, Graduate Programs and Research*

Katherine Powers, *Director, Graduate Studies*

Linda Patton, *Director, Extramural Funding Opportunities*

Paulina Tagle, *Director, Grants and Contracts*

Tami Foy, *Interim Director, Research Development*

William Presch, *Director, Desert Studies Consortium*

Edgar Trotter, *Acting Associate Vice President, Undergraduate Programs*

Amy Cox-Peterson, *Director, Center for Careers in Teaching*

Bridget Driscoll, *Director, Academic Advisement Center*

Christina Goode, *Coordinator, Health Professions Advising*

Dawn Macy, *Director, Center for Internships and Community Engagement*

Deanna Merino-Contino, *Director, President's Scholars*

Gerald Patton, *Director, Assessment and Educational Effectiveness*

Nancy Page Fernandez, *Director, Freshman Programs*

Susan Jacobsen, *Director, University Honors Program*

## University Extended Education

Harry L. Norman, *Associate Vice President, International Programs/Dean, University Extended Education*

Sandy Wong, *Manager, Administrative Manager to the Dean*

Carol Creighton, *Acting Associate Dean, Academic Programs*

Larisa Brener, *Manager, International Student Recruitment*

Patsy Burns, *Manager, Osher Lifelong Learning Institute*

Steven Chan, *Director, Budget and Finance, and Student Services*

Antonietta Bartter, *Manager, Student Services*

Echo Chang, *Director, Self-Support Degree Programs*

Sandeep Chopra, *Assistant Director, Information Technology*

Gregory Dymont, *Director, Fullerton Arboretum*

Rhona Genzel, *Director, American Language Program*

Kim Koenigsberger, *Manager, International Student*

*Recruitment and Retention*

Margaret Luzzi, *Director, University Extended Education*

*Academic Advising*

Karen McKinley, *Director, Summer Session/Intercession/and*

*Centralized Program Support*

Mary Medico, *Manager, UEE Communications*

Christine Pircher-Barnes, *Director, International Student*

*Services*

Dennis Robinson, *Director, Distance Education/OASIS*

Sally Starr, *Director, Community Outreach and Workforce*

*Strategy and Human Resources*

Lay Tuan Tan, *Director, International Programs*

Shelly Wang, *Manager, Program Development*

Lisa Xue, *Director, International Programs/Asia and*

*International Outreach*

Chuck Ritz, *President, Osher Lifelong Learning Institute*

## Library

Richard C. Pollard, *University Librarian*

Vacant, *Associate University Librarian*

Susan Tschabrun, *Chair, Technical Services*

Ron Rodriguez, *Head, Access Library Services*

## Irvine Campus

Susan Cooper, *Dean, Irvine Branch Campus*

Van Muse, *Associate Dean*

## **ADMINISTRATION AND FINANCE**

Stephen G. Garcia, *Interim Vice President for Administration and Finance/Chief Financial Officer*

Vacant, *Executive Assistant to the Vice President*

Lupe Briseno, *Confidential Assistant to the Vice President*

William C. Barrett, *Associate Vice President, Administration and Finance*

Paulette Blumberg, *Interim Associate Vice President for Administration and Finance*

Laleh Graylee, *Director, Analysis and Decision Support/Divisional Finance Management*

Welson Badal, *Director, Administration and Finance IT*

## **Human Resources Services and Risk Management**

Robert S. Foldesi, *Interim Associate Vice President, Human Resources Services*

John Beisner, *Assistant Vice President Human Resources and Risk Management*

Denise Johnson, *Interim Assistant Vice President, Human Resources Operations*

Blanca Rodriguez, *Director, Payroll*

Curtis Plotkin, *Interim Director, Environmental Health and Safety*

Elizabeth Castello, *Manager, Labor Relations*

Elda Moreno, *Manager, Benefits*

Phenicia McCullough, *Manager, Employment*

Maria Gonzalez, *Manager, Classification and Compensation*

Susan Leavy, *Coordinator of Diversity and Equity*

## **Auxiliary Services Corporation (ASC)**

Frank Mumford, *Executive Director/CEO, ASC and Housing Authority*

Chuck Kissel, *Associate Executive Director, ASC*

Tariq Marji, *Chief Financial Officer, ASC*

James Alexander, *Director, Property Development*

Kimberly Ball, *Director, Titan Shops*

Anthony Lynch, *Director, Campus Dining*

Denise Bell, *Director, Sponsored Programs*

Rosario Borromeo, *Director, Human Resources & Payroll*

Mike Marcinkevich, *Director of Information Technology*

## **Parking and Transportation**

Joe Ferrer, *Director, Parking and Transportation Services*

Kristen Jasko, *Manager, Parking Services*

Charles Holt, *Manager, Field Operations*

## **Facilities Planning and Management**

Jay W. Bond, *Associate Vice President for Facilities Planning and Management*

Kim Apel, *Manager, Capital and Physical Planning*

Tinnah Medina, *Director, Capital Project Management*

Willem H. van der Pol, *Director, Facilities Operations*

## **Finance**

Brian Jenkins, *Associate Vice President, Financial Services*

May Wong, *Executive Assistant to the Associate Vice President*

Don Green, *Director, Contracts and Procurement*

Steven Yim, *Controller/Interim Auditor*

Sarah Song, *Director, Budget Planning and Administration*

## **University Police**

Dennis DeMaio, *Chief of University Police*

John Brockie, *Interim Captain*

Scot Willey, *Operations Lieutenant*

## **INFORMATION TECHNOLOGY**

Amir Dabirian, *Vice President for Information Technology/Chief Information Technology Officer*

Robin Crew, *Executive Assistant to the Vice President, Information Technology and Divisional Human Resources Manager*

Kerry Boyer, *Senior Director of Information Technology and Information Security*

Pam Drummond, *Director, Information Technology and Centralized IT Purchasing*

Afsaneh Hamedani, *Assistant Director User Services/Call Center*  
Rommel Hidalgo, *Assistant Vice President, IT/Director, Infrastructure Services*

Terry Jarmon, *Manager, IT Assets/Reprographics*

Joe Luzzi, *Associate Director, Enterprise Resource Planning (ERP) Technical Services*

Ken Ly, *Senior Director of Development and Application Support*

Mike Marcinkevich, *Auxiliaries Liaison for IT*

Gladys Maldoon, *Assistant Director User Services/TitanCard*

Marci Payne, *Project Management Officer*

Wei Cheng Peng, *Assistant Director, Infrastructure Services*

Hector Ramirez, *Assistant Director User Services/Deskside Support, Access and AVT*

Christina Yanez, *Acting Telecommunications Manager*

## **STUDENT AFFAIRS**

Berenecea Johnson Eanes, *Vice President for Student Affairs*

Ryan Alcantara, *Associate Vice President for Student Affairs*

Elahe Amani, *Director, Technology Services for Student Affairs*

Adriana Badillo, *Project Director, GEAR UP*

Meredith Basil, *Associate Director of Athletics and Director, Athletic Academic Services*

Mary Becerra, *Interim Director, Women's Center/Adult Re-Entry*

Kurt Borsting, *Director, Titan Student Union, Associated Students, Inc.*

Gerald Bryant, *Director, Ronald E. McNair Scholars Program*

James Case, *Director, Career Center*

Melba Castro, *Director, Educational Partnerships*

Leo Cota, *Project Director, Upward Bound*  
 Carmen Curiel, *Director, Multicultural Leadership Center*  
 Steve DiTolla, *Senior Associate Athletics Director*  
 James Donovan, *Director, Intercollegiate Athletics*  
 David Forgues, *Chief of Operations for Student Affairs*  
 Sara Gamez, *Director, Guardian Scholars Program*  
 Leticia Gutierrez-Lopez, *Director, Counseling and Psychological Services*  
 Angel Hernandez, *Project Director, Talent Search Program*  
 Lea Jarnagin, *Associate Vice President for Student Affairs*  
 Fred Lipscomb, *Director, Housing and Residence Life*  
 Rachel Lynch, *Interim Budget Manager*  
 Larry Martin, *Director, New Student Programs*  
 Kandy Mink Salas, *Associate Vice President for Student Affairs*  
 Paul Miller, *Director, Disabled Student Services*  
 Jeremiah Moore, *Associate Dean of Students*  
 Anthony Ragazzo, *Director, Leader and Program Development, Associated Students, Inc.*  
 Juanita Razo Dueñas, *Associate Dean of Students, Leadership and Multicultural Development Programs*  
 Sandra Rhoten, *Associate Dean of Students, Judicial Affairs*  
 Fred Sanchez, *Executive Director, Associated Students, Inc.*  
 Cecilia Schouwe, *Director, Financial Aid*  
 Kathy Spofford, *Director, Student Health and Counseling Center*  
 Jenny Taylor, *Director, Children's Center, Associated Students, Inc.*  
 Esiquio Ubalde, *Associate Dean of Students, Student Life*  
 Alison Wittwer, *Director, Student Recreation Center, Associated Students, Inc.*  
 Rochelle Woods, *Interim Director, Student Academic Services*  
 Vacant, *Dean of Students*

## UNIVERSITY ADVANCEMENT

Gregory J. Saks, *Vice President for University Advancement*  
 Tara Garcia, *Executive Assistant to the Vice President and Division HR Coordinator*  
 Theresa Davis, *Associate Vice President, College and Program Development*  
 Michele Cesca, *Associate Vice President, Central Development and Major Events*  
 Jeffrey D. Cook, *Associate Vice President, Strategic Communications*  
 Owen Holmes, *Associate Vice President, Government Relations*  
 Dianna Fisher, *Executive Director, Alumni Relations*  
 Ira Unterman, *Assistant Vice President, Advancement Operations and CSUF Philanthropic Foundation Chief Financial Officer*

## COLLEGE OF THE ARTS

Joseph Arnold, *Dean*  
 James Taulli, *Associate Dean*  
 Andi Sims, *Assistant Dean, Student Affairs*

### Visual Arts Department

Dana Lamb, *Chair*

### Music Department

Marc Dickey, *Chair*

### Theatre and Dance Department

Bruce Goodrich, *Chair*

## COLLEGE OF COMMUNICATIONS

William G. Briggs, *Dean*  
 Irene Matz, *Associate Dean*  
 Peggy Garcia Bockman, *Assistant Dean, Student Affairs*

### Communications Department

Diane Witmer, *Chair*

### Radio-TV-Film Department

Ed Fink, *Chair*

### Human Communication Studies Department

John Reinard, *Chair*

## COLLEGE OF EDUCATION

Claire C. Cavallaro, *Dean*  
 Karen Ivers, *Associate Dean*  
 Aimee Nelson, *Assistant Dean, Student Affairs*

### Educational Leadership Department

Jennifer Goldstein, *Chair*

### Elementary and Bilingual Education Department

Lisa Kirtman, *Chair*

### Reading Department

Lisa Kirtman, *Acting Chair*

### Secondary Education Department

Grace Cho, *Chair*

### Special Education Department

Melinda Pierson, *Chair*

### Instructional Design and Technology Program

JoAnn Carter-Wells, *Coordinator*



**COLLEGE OF ENGINEERING AND COMPUTER SCIENCE**

Raman Menon Unnikrishnan, *Dean*  
Susamma Barua, *Associate Dean*  
Victor Delgado, *Assistant Dean, Student Affairs*

**Computer Science Department**

Shawn Wang, *Chair*

**Civil and Environmental Engineering Department**

Uksun Kim, *Chair*

**Electrical Engineering Department**

Mostafa Shiva, *Chair*

**Mechanical Engineering Department**

Roberta Rikli, *Acting Chair*

**Computer Engineering Program**

Susamma Barua, *Coordinator*

**Environmental Engineering Program**

Jeff Kuo, *Coordinator*

**Software Engineering Program**

Ning Chen, *Coordinator*

**COLLEGE OF HEALTH AND HUMAN DEVELOPMENT**

Shari McMahan, *Dean*  
Kathy Koser, *Associate Dean*  
Lea Beth Lewis, *Assistant Dean, Student Affairs*

**Child and Adolescent Studies Department**

Kari Knutson Miller, *Chair*

**Counseling Department**

Leah Brew, *Chair*

**Health Science Department**

Jessie Jones, *Chair*

**Human Services Department**

Mikel Hogan, *Chair*

**Kinesiology Department**

Bill Beam, *Acting Chair*

**Military Science Program**

Lt. Col. Kelley Donham, *Coordinator*

**School of Nursing**

Cindy Greenberg, *Director*

**Social Work Department**

David Chenot, *Acting Chair*

**COLLEGE OF HUMANITIES AND SOCIAL SCIENCES**

Angela Della Volpe, *Dean*  
Sheryl Fontaine, *Associate Dean*  
Mitch Avila, *Associate Dean*  
David McKenzie, *Assistant Dean, Student Affairs*

**African American Studies Department**

Alexandro Gradilla, *Chair*

**American Studies Department**

Jesse Battan, *Chair*

**Anthropology Department**

Vacant, *Chair*

**Asian Studies Program**

William Haddad, *Coordinator*

**Asian American Studies Program**

Eliza Noh, *Coordinator*

**Chicana and Chicano Studies Department**

Alexandro Gradilla, *Chair*

**Comparative Religion Department**

Paul Levesque, *Chair*

**English, Comparative Literature and Linguistics Department**

Lana Dalley, *Acting Chair*

**Environmental Studies Program**

John Bock, *Coordinator*

**European Studies Program**

Cora Granata, *Coordinator*

**Geography Department**

John Carroll, *Chair*

**Gerontology Program**

William Haddad, *Coordinator*

**History Department**

Jochen Burgtorf, *Chair*

**Latin American Studies Program**

Sandra Perez-Linggi, *Coordinator*

**Liberal Studies Department**

Jim Hofmann, *Chair*

**Modern Languages and Literatures Department**

Reyes Fidalgo, *Chair*

**Philosophy Department**

Heather Battaly, *Chair*

**Politics, Administration and Justice Division**

Stephen Stambough, *Chair*

**Psychology Department**

Jack Mearns, *Chair*

**Sociology Department**

Michael Perez, *Chair*

**Women and Gender Studies Program**

Rebecca Dolhinow, *Coordinator*

**COLLEGE OF NATURAL SCIENCES AND MATHEMATICS**

Robert Koch, *Acting Dean*

Mark Filowitz, *Associate Dean*

Amy Mattern, *Acting Assistant Dean, Student Affairs*

**Biological Science Department**

Kathryn Dickson, *Chair*

**Chemistry and Biochemistry Department**

Christopher Meyer, *Chair*

**Geological Sciences Department**

Phil Armstrong, *Chair*

**Mathematics Department**

Stephen Goode, *Chair*

**Physics Department**

James Feagin, *Chair*

**MIHAYLO COLLEGE OF BUSINESS AND ECONOMICS**

Anil K. Puri, *Dean*

Morteza Rahmatian, *Associate Dean, Academic Programs and  
Faculty Development*

Kim Tarantino, *Associate Dean, Administration*

Triseinge Black, *Assistant Dean, Academic Services*

Emeline Yong, *Assistant Dean, Student Affairs*

**Accounting Department**

Betty Chavis, *Chair*

**Economics Department**

David Wong, *Chair*

**Finance Department**

Mark Stohs, *Chair*

**Information Systems and Decision Sciences Department**

Bhushan Kapoor, *Chair*

**Management Department**

Gus Manoochchri, *Chair*

**Marketing Department**

Irene Lange, *Chair*



# Colleges

OR

STATE UNIVERSITY

# College of the Arts



*“More than anything else, the excellence of our programs can be seen in our people – the faculty, staff, students and graduates. Their presence is perhaps the strongest recommendation to be made for pursuing the arts at Cal State Fullerton.”*

**Dean Joseph Arnold**  
COLLEGE OF THE ARTS

## **DEAN**

Joseph Arnold

## **ASSOCIATE DEAN**

James Taulli

## **ASSISTANT DEAN, STUDENT AFFAIRS**

Andi Sims

## **DEAN'S OFFICE**

Visual Arts 199  
657-278-3256

## **COLLEGE WEBSITE**

[fullerton.edu/arts](http://fullerton.edu/arts)

The learning opportunities within the College of the Arts are based on a commitment to artistic and academic excellence. We provide an environment that encourages individual achievement for performers, artists and scholars.

Within the broader university liberal arts environment, the College of the Arts offers intensive programs in Art, Music, Theatre and Dance. We are also committed to the enhancement of artistic awareness of all students.

We extend a warm welcome to you, and we promise that with your perseverance, we will do everything possible to further your goals and objectives in whatever field of the arts you choose.

Academic advisement is available through the departments. Faculty advisers are available to assist students with career decisions and degree requirements.

Several scholarships are available to students in the College of the Arts. Inquiries should be made to the respective department offices.

## **PROGRAMS OFFERED**

Art, Bachelor of Arts

Art History

General Studio Art

Teaching–Single Subject Preparation

Art, Bachelor of Fine Arts

Ceramics

Crafts

Creative Photography

Drawing and Painting

Entertainment Art/Animation



Graphic Design  
 Illustration  
 Sculpture  
 Art, Minor  
 Art, Master of Arts  
     Design  
     Drawing and Painting (Printmaking)  
     Sculpture  
     Crafts (including Ceramics, Glass, Wood, Jewelry/  
         Metalsmithing)  
     Design (including Graphic Design, Illustration, Exhibition  
         Design, Creative Photography)  
     Art History  
 Art, Master of Fine Arts  
     Drawing, Painting and Printmaking  
     Sculpture  
     Ceramics (including Glass)  
     Crafts (including Jewelry/Metalsmithing and Woodworking)  
     Design (including Graphic Design, Illustration and Exhibi-  
         tion Design)  
     Creative Photography  
 Art, Museum Studies, Certificate  
 Dance, Bachelor of Arts  
 Music, Bachelor of Arts  
     Liberal Arts  
     Music Education  
     Music History and Theory  
 Music, Bachelor of Music  
     Composition  
     Classical Guitar  
     Instrumental  
     Jazz and Commercial Music  
     Keyboard  
     Voice  
     Accompanying  
 Music, Minor  
 Music, Master of Arts  
     Music History and Literature  
     Music Education  
     Piano Pedagogy  
 Music, Master of Music  
     Performance  
     Theory-Composition  
 Music, Single Subject (Secondary) Credential  
 Theatre Arts, Bachelor of Arts  
     Applied Studies in Theatre  
     Specialized Studies in Theatre  
     Directing  
     Playwriting  
     Technical Production/Design  
     Teaching  
 Theatre Arts, Bachelor of Fine Arts  
     Acting  
     Musical Theatre  
 Theatre Arts, Master of Fine Arts  
     Acting  
     Directing  
     Design and Technical Production

# College of Communications



*“As one of the nation’s largest communications colleges, we take great pride in our many alumni who have achieved success in positions of prominence across the country. Our goal is to provide a supportive learning environment for our students through the efforts of our excellent faculty, staff and administrators. We encourage our students to become involved and to participate in communication research, laboratory and extra-curricular opportunities that will strengthen them in the process of preparing for their careers.”*

**Dean William Briggs**  
COLLEGE OF COMMUNICATIONS

## **DEAN**

William Briggs

## **ASSOCIATE DEAN**

S. Irene Matz

## **ASSISTANT DEAN, STUDENT AFFAIRS**

Peggy Garcia Bockman

## **DEAN'S OFFICE**

College Park Building, Suite 450  
657-278-3355

## **COLLEGE WEBSITE**

[communications.fullerton.edu](http://communications.fullerton.edu)

At the heart of an open society is the free flow of information. Delivery systems of those messages may change with development of new technologies, but the need for trained communicators to gather, synthesize, verify and disseminate that information remains constant. Training those communication professionals is the mission of the College of Communications.

Academic programs in the College of Communications prepare students to work in a number of media-related industries, as well as related fields in business, education, government, healthcare, entertainment and more. Communicators may be objective reporters of news and information, persuasive advocates on behalf of clients and organizations, or trained specialists enabling others to communicate effectively.

Drawing heavily on strong theoretical foundations in the liberal arts and social sciences, the College of Communications applies the tools and techniques of today's ever-changing environment to match messages with audiences, and provide students with the skill-sets to enjoy successful careers in an increasingly global competitive arena.

With strong linkage to the professional community, the College of Communications offers an exciting opportunity for state-of-the-art education combined with the highest ethical and professional standards.

## **PROGRAMS OFFERED**

Communications, Bachelor of Arts

Advertising

Entertainment and Tourism Communications

Journalism

Photocommunications

Public Relations

Communications, Minor

Advertising

Journalism

Public Relations

Communications, Master of Arts

Mass Communications Research and Theory

Professional Communications

Communications in Tourism and Entertainment

Communicative Disorders, Bachelor of Arts

Communicative Disorders, Master of Arts

Speech-Language Pathology Services Credential in Language,  
Speech and Hearing

Communication Studies, Bachelor of Arts

Argumentation and Persuasion

Intercultural Communication

Interpersonal Communication

Organizational Communication

Communication Studies

Communication Studies, Minor

Communication Studies, Master of Arts

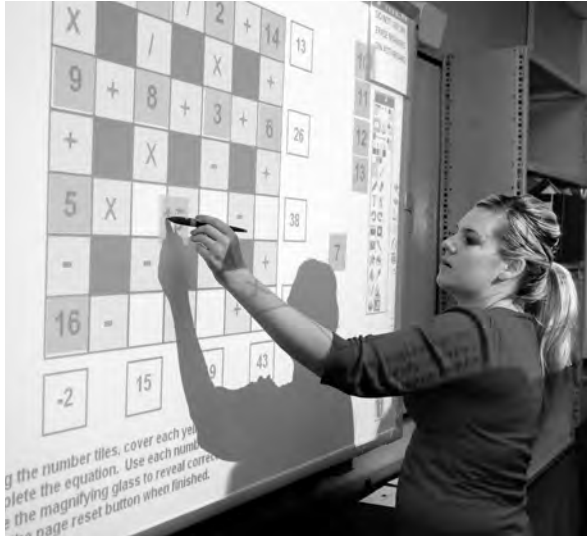
Radio-TV-Film, Bachelor of Arts

Radio-TV-Film, Minor

Screenwriting, Master of Fine Arts



# College of Education



*“The mission of the College of Education is to prepare high-quality educators and leaders who engage in research-based instruction and reflective practice, meet ethical and professional standards, participate in innovative collaborative endeavors, are committed to lifelong learning, are dedicated to making the world a better place through education, and whose actions reflect valuing diversity. The College has an exceptional and diverse faculty and staff committed to excellence in teaching, scholarship and service. Through rigorous inquiry, they look to expand the realm of knowledge about teaching, learning and educational leadership.”*

**Dean Claire C. Cavallaro**  
COLLEGE OF EDUCATION

## **DEAN**

Claire C. Cavallaro

## **ASSOCIATE DEAN**

Karen S. Ivers

## **ASSISTANT DEAN**

Aimee Nelson

## **DEAN'S OFFICE**

College Park 500  
657-278-3411

## **COLLEGE WEBSITE**

[ed.fullerton.edu](http://ed.fullerton.edu)

The College provides educators, leaders and professionals in various learning environments with the ability to apply critical and informed thinking to professional practice and problem-solving and to use these skills and attributes to become change agents in their schools, communities and other work places. The College prepares students to become active and critical thinkers in order to meet academic requirements related to university learning.

The College of Education is organized into the following departments: Educational Leadership, Elementary and Bilingual Education, Reading Education, Secondary Education and Special Education. In addition, there is an Instructional Design and Technology program for graduate students, and a Doctor of Education program.

## **PROGRAMS OFFERED**

- California Reading, Certificate
- Community College Leadership, Doctor of Education
- Community College Studies, Certificate
- Computing for Elementary School Teachers, Certificate
- Early Childhood Specialist, Certificate
- Education, Master of Science
  - Bilingual/Bicultural Education (Spanish-English)
  - Educational Administration
  - Educational Technology
  - Elementary Curriculum and Instruction
  - Higher Education
  - Reading

Secondary Education

Special Education

Instructional Design and Technology, Certificate

Instructional Design and Technology, Master of Science

Online Teaching and Learning, Certificate

Postsecondary Reading and Learning, Certificate

Pre K-12 Leadership, Doctor of Education

Resource Specialist, Certificate

Teaching and Administrative Credentials (See Teaching  
Credential Programs section of this catalog)

Teaching English to Speakers of Other Languages (See the  
Department of Modern Languages and Literatures section  
of this catalog.)

# College of Engineering and Computer Science



*“Our mission is simple. We want to educate engineers and computer scientists who will graduate with state-of-the art knowledge in their chosen field and are ready to embark on careers in industry and government, or proceed to acquire advanced degrees in their own or related fields. More and more of our graduates are also interested in being entrepreneurs, thanks to the success of so many young people on the West Coast who have become successful in creating wealth via technology.”*

**Dean Raman Menon Unnikrishnan**

COLLEGE OF ENGINEERING AND COMPUTER SCIENCE

**DEAN**

Raman Menon Unnikrishnan

**ASSOCIATE DEAN**

Susamma Barua

**DEAN'S OFFICE**

Computer Science 502  
657-278-3362

**COLLEGE WEBSITE**

[fullerton.edu/ecs](http://fullerton.edu/ecs)

The curricula of the College of Engineering and Computer Science are designed to prepare students for careers in engineering and computer science and for further study and specialization in graduate work. The faculty of the college is actively involved, not only in instruction and scholarship, but also in the advisement of students on topics relating to the planning of career and program goals. Cooperative education and internship programs are generally available.

**PROGRAMS OFFERED**

Civil Engineering, Bachelor of Science

    Emphasis in Architectural Engineering

Civil Engineering, Master of Science

    Concentration in Environmental Engineering

Computer Engineering, Bachelor of Science

Computer Science, Bachelor of Science

Computer Science, Minor

Computer Science, Master of Science

Electrical Engineering, Bachelor of Science

Electrical Engineering, Master of Science

    Option in Systems Engineering

Environmental Engineering, Master of Science

Mechanical Engineering, Bachelor of Science

    Emphasis in Manufacturing Engineering

Mechanical Engineering, Master of Science

Software Engineering, Master of Science

## **ENGINEERING – UNDECLARED**

The Engineering – Undeclared option is designed for students who are interested in pursuing an engineering education, but are undecided on a particular major within the College of Engineering and Computer Science. The Associate Dean of the college will provide academic advising, help students explore their academic interests and guide students through the process of selecting and declaring a major. Students admitted as Engineering – Undeclared must declare a major before the beginning of the third semester.

The option is open only to freshmen applicants and is not open to transfer applicants. Transfer applicants must choose a specific major and should apply to that major.

## **GENERAL ENGINEERING COURSES**

Courses are designated as EGGN in the class schedule.

### **100 Introduction to Engineering (3)**

Introduction to engineering disciplines and its sub-fields, basic tools used in engineering practice, hands-on engineering projects

### **205 Digital Computation (3)**

(Same as EGME 205)

### **308 Engineering Analysis (3)**

Prerequisites: PHYS 226, MATH 250B or equivalent.

Fundamentals and engineering applications of Fourier series, Fourier transforms, Laplace transforms, complex analysis, vector analysis; engineering applications. (Same as EGCE /EGEE /EGME 308)

### **314 Engineering Economy (2)**

(Same as EGME 314)

### **403 Computer Methods in Numerical Analysis (3)**

Prerequisites: MATH 250B and EGGN 205 or equivalent.

Use of numerical methods and digital computers in the solution of algebraic, transcendental, simultaneous, ordinary and partial differential equations.

### **495 Professional Practice (1-3)**

Prerequisite: junior or senior standing in engineering. Professional engineering work in industry or government. Written report required. May be repeated for credit. Applicable towards bachelor's degree programs. Not for credit in the graduate program.

# College of Health and Human Development



*“The mission of our college is to provide exemplary education, research and community outreach related to the health, development and well-being of all people.”*

**Dean Shari McMahan**

COLLEGE OF HEALTH AND HUMAN DEVELOPMENT

## **DEAN**

Shari McMahan

## **ASSOCIATE DEAN**

Kathy Koser

## **ASSISTANT DEAN, STUDENT AFFAIRS**

Vacant

## **DEAN'S OFFICE**

Education Classroom Building 606  
657-278-3311

## **COLLEGE WEBSITE**

[hhd.fullerton.edu](http://hhd.fullerton.edu)

Through its teaching, scholarship and service mission, the College of Health and Human Development provides students with an education that contributes to their intellectual, personal and professional development. Emphasis is placed on theory and practice, with special attention to the development of critical thinking and humanistic skills needed to function in a widely diverse and ever-changing society. Programs in the college lead to traditional academic degrees at the baccalaureate and graduate levels, as well as to a variety of specific certificates, credentials and licenses.

The College of Health and Human Development is organized into the following departments and programs: Child and Adolescent Studies, Counseling, Health Science, Human Services, Kinesiology, Military Science, Social Work; and the School of Nursing.

## **PROGRAMS OFFERED**

Athletic Training, Bachelor of Science

Child and Adolescent Development, Bachelor of Science

Child and Adolescent Development, Minor

Counseling, Master of Science

Health Science, Bachelor of Science

Health Science, Minor

Human Services, Bachelor of Science

Human Services, Minor

Kinesiology, Bachelor of Science

Kinesiology, Bachelor of Science in Athletic Training

Kinesiology, Minor

Kinesiology, Master of Science

Military Science, Minor  
Second Lieutenant Commission, U.S. Army  
Nursing, Bachelor of Science  
    Registered Nurse to Bachelor of Science in Nursing  
    Prelicensure to Bachelor of Science in Nursing  
Nursing, School Nurse Services Credential  
Nursing, Master of Science  
    Nurse Anesthetist  
    Nurse Educator  
    Nursing Leadership  
    Nurse Midwifery  
    Nurse Practitioner, Women's Health  
    Prelicensure to Master of Science in Nursing  
    School Nursing  
Nursing, Doctor of Nurse Practice  
Master of Public Health  
Master of Social Work

# College of Humanities and Social Sciences



*“The initial letters of Humanities and Social Sciences, ‘H&SS,’ also stand for ‘Home of Student Success.’ Our college will provide students with the tools necessary to succeed in classes, at the university and in any professional field.”*

**Dean Angela Della Volpe**

COLLEGE OF HUMANITIES AND SOCIAL SCIENCES

## **DEAN**

Angela Della Volpe

## **ASSOCIATE DEAN, ACADEMIC PROGRAMS**

Mitch Avila

## **ASSOCIATE DEAN, ADMINISTRATION**

Sheryl I. Fontaine

## **ASSISTANT DEAN, STUDENT AFFAIRS**

David McKenzie

## **DEAN'S OFFICE**

Humanities 211  
657-278-3528

## **COLLEGE WEBSITE**

[hss.fullerton.edu](http://hss.fullerton.edu)

The College of Humanities and Social Sciences (H&SS) offers students the breadth of a traditional liberal arts education while preparing them for a wide range of professions, graduate school and advanced professional study. It is home to 20 different departments and programs. All majors in H&SS provide students with the broad education and core skills that will be attractive to employers in whatever career or field a graduate may choose. For those seeking to become high school teachers, we offer programs leading to secondary credentials in English/Language Arts, Foreign Languages and History/Social Science.

Graduates from our college speak and write in ways that inform and inspire others. Through their studies, they have come to understand and appreciate the rich traditions of thought and expression, ideologies, belief systems and epistemologies that have shaped and continue to shape the world.

## **PROGRAMS OFFERED**

Afro-Ethnic Studies, Option in B.A. Ethnic Studies

Afro-Ethnic Studies, Minor

American Studies, Bachelor of Arts

American Studies, Master of Arts

American Studies, Minor

Anthropology, Bachelor of Arts

Anthropology, Master of Arts

Anthropology, Minor

Asian American Studies, Option in B.A. Ethnic Studies

Asian American Studies, Minor

Asian Studies, Minor



Chicana/o Studies, Option in B.A. Ethnic Studies  
 Chicana/o Studies, Minor  
 Christian Studies, Minor  
 Comparative Literature, Bachelor of Arts  
 Criminal Justice, Bachelor of Arts  
 Criminal Justice, Minor  
 English, Bachelor of Arts  
 English, Master of Arts  
 English, Minor  
 Environmental Studies, Master of Science  
 Ethnic Studies, Bachelor of Arts  
 European Studies, Bachelor of Arts  
 European Studies, Minor  
 French, Bachelor of Arts  
 French, Minor  
 Geography, Bachelor of Arts  
 Geography, Master of Arts  
 Geography, Minor  
 German, Minor  
 Gerontology, Master of Science  
 Gerontology, Minor  
 Gerontology, Certificate  
 History, Bachelor of Arts  
 History, Master of Arts  
 History, Minor  
 International Politics, Minor  
 Islamic Studies, Minor  
 Japanese, Bachelor of Arts  
 Japanese, Minor  
 Jewish Studies, Minor  
 Latin American Studies, Bachelor of Arts  
 Latin American Studies, Minor  
 Law, Politics and Society, Minor  
 Liberal Studies, Bachelor of Arts  
 Liberal Studies, Minor  
 Linguistics, Bachelor of Arts  
 Linguistics, Master of Arts  
 Linguistics, Minor

Philosophy, Bachelor of Arts  
     Social, Moral and Legal Philosophy for the Professions  
 Philosophy, Minor  
 Political Science, Bachelor of Arts  
 Political Science, Master of Arts  
 Political Science, Minor  
 Portuguese, Minor  
 Psychology, Bachelor of Arts  
 Psychology, Master of Arts  
 Psychology, Master of Science Clinical  
 Psychology, Minor  
 Public Administration, Bachelor of Arts  
 Public Administration (M.P.A.)  
     Criminal Justice  
     Human Resources  
     Public Finance Management  
     Urban Management  
 Public Administration, Minor  
 Queer Studies, Minor  
 Religious Studies, Bachelor of Arts  
 Religious Studies, Minor  
 Sociology, Bachelor of Arts  
     Aging and the Life Course  
     Deviance and Social Control  
     Education  
     Family  
     Race, Class and Gender  
     Social Work  
 Sociology, Master of Arts  
 Sociology, Minor  
 Spanish, Bachelor of Arts  
 Spanish, Master of Arts  
 Spanish, Minor  
 Teachers of English as a Second Language (Certificate)  
 Teaching English to Speakers of Other Languages- TESOL  
     (Concentration in M.S. Education)  
 Women's Studies, Bachelor of Arts  
 Women's Studies, Minor

## **HUMANITIES COURSES**

### **350T Life and Culture Abroad (3)**

Prerequisite: completion of General Education Category C.2. Interdisciplinary course providing a broad background to culture and civilization abroad. Social, historical and cultural approach to contemporary societies abroad. Examines traditions and institutions to help understand the 21st century way of life abroad. Related field trips. May be repeated for credit up to 6 units. (Course only offered as part of CSUF Study Abroad Program).

### **399 Directed Study (3)**

Prerequisite: consent of instructor. Supervised individual study. May be taken for credit with different topics for a maximum of six units. No more than three units may be taken in any one semester.

### **495 Humanities Internship (3, 6)**

Prerequisite: junior or senior standing. Supervised internship requiring course project and 120 hours (3 units) or 240 hours (6 units).

### **496 Social Sciences Internship (3, 6)**

Prerequisite: junior or senior standing. Supervised internship requiring course project and 120 hours (3 units) or 240 hours (6 units).

### **499 Independent Study (3)**

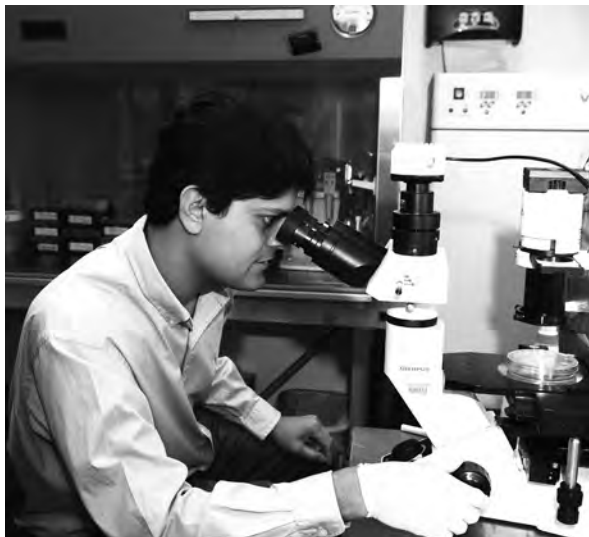
Prerequisite: consent of instructor. Independent research project in humanities or social sciences. May be taken for credit with different topics for a maximum of six units. No more than three units may be taken in any one semester.

### **599 Independent Graduate Research (3)**

Prerequisites: graduate standing and consent of home department graduate adviser. May be taken for credit with different topics for a maximum of six units. No more than three units may be taken in any one semester.



# College of Natural Sciences and Mathematics



*“We provide a comprehensive educational experience to all students through student-centered, inquiry-based instruction in the classroom and the laboratory. We view research experience for students as an essential and necessary component in the learning of science.”*

**Acting Dean Robert A. Koch**

COLLEGE OF NATURAL SCIENCES AND MATHEMATICS

**ACTING DEAN**

Robert A. Koch

**ASSOCIATE DEAN**

Mark S. Filowitz

**INTERIM ASSISTANT DEAN,  
STUDENT AFFAIRS**

Amy Mattern

**DEAN'S OFFICE**

McCarthy Hall 166

657-278-2638

**COLLEGE WEBSITE**

[nsm.fullerton.edu](http://nsm.fullerton.edu)

The curricula of the College of Natural Sciences and Mathematics are designed to prepare students for careers in scientific, mathematical and other technical fields; for further study and specialization in advanced graduate work; and for entry into professional schools of medicine and other health-related disciplines. The faculty of the college is actively involved, not only in instruction and research, but in the advisement of students in the college on topics relating to the planning of career and program goals. Cooperative education internship programs are available in each of the College's Departments.

The College sponsors a variety of professional and educational programs at which students and faculty have an opportunity to meet with their counterparts. The College also has an external advisory council.

**PROGRAMS OFFERED**

Biological Science, Bachelor of Science

Biology, Master of Science

Biology, Master of Biotechnology (MBt)

Biology, Minor in Cell and Molecular Biology

Biology, Minor in Environmental Biology

Biochemistry, Bachelor of Science

Biotechnology, Minor

Chemistry, Bachelor of Arts

Chemistry, Bachelor of Science

Chemistry, Minor

Chemistry, Master of Science

Chemistry, Master of Arts  
Clinical Trials Project Management, Certificate  
Earth Science, Bachelor of Arts  
Geology, Bachelor of Science  
Geology, Minor  
Geology, Master of Science  
Mathematics, Bachelor of Arts  
Mathematics, Minor  
Mathematics for Teacher Education, Minor  
Mathematics, Master of Arts  
Natural Sciences, Minor  
Physics, Bachelor of Science  
Physics, Minor  
Physics, Master of Science  
Master of Arts in Teaching Science (M.A.T.S.)

# Mihaylo College of Business and Economics



*“Welcome to the premier public university business school in Orange County. Our impact stems from our immense presence in the region and strong links to the economic progress of the area. As the largest AACSB-accredited business school on the West Coast, the college prepares an unmatched number of graduates for success in the workplace, and our faculty, staff and students work with business leaders to advance the fortunes of businesses in Orange County and Southern California.”*

**Dean Anil K. Puri**

MIHAYLO COLLEGE OF BUSINESS AND ECONOMICS

## **DEAN**

Anil K. Puri

## **ASSOCIATE DEAN, ACADEMIC PROGRAMS AND FACULTY DEVELOPMENT**

Morteza Rahmatian

## **ASSOCIATE DEAN, ADMINISTRATION**

Kim Tarantino

## **ASSISTANT DEANS**

Triseinge Black, Academic Services  
Emeline Yong, Student Affairs

## **DEAN'S OFFICE**

Steven G. Mihaylo Hall 3100  
657-278-4652

## **COLLEGE WEBSITE**

[business.fullerton.edu](http://business.fullerton.edu)

## **VISION AND MISSION STATEMENTS**

### **Vision Statement**

We will be the choice of Southern California's businesses and governments for college graduates, business solutions and professional development.

### **Mission Statement**

We create and apply knowledge that transforms student lives, develops business leaders who shape the regional economy and advance the intellectual capital of our diverse region.

Mihaylo College's educational program instills in our vast corps of graduates core business knowledge and flexible critical thinking and motivation, thereby putting our students in a position to contribute to the success of regional business. As the only Orange County business school with AACSB accreditation in Business Administration and Accounting at both the undergraduate and graduate level, we provide:

A practical and applied curriculum. When students receive their diplomas, they will be able to quickly translate their education into a good job and success in the workplace. Students and alumni of our program are "ready to work" and prepared to make contributions to their organizations from their first days on the job.

A global perspective. Students gain an international perspective from a culturally and ethnically rich student body, a diverse faculty and global academic and business community partners.

State-of-the-art technology. Students will keep pace with e-commerce and evolving business information systems through a mix of educational tools, instructional technology and technological partners.

Value. By being affordable, accredited and practical, Mihaylo College defines value in education and keeps pace with today's economy.

## PROGRAMS OFFERED

Accountancy, Master of Science

Business Administration, Bachelor of Arts

Accounting

Business Economics

Decision Sciences

Entertainment and Tourism Management

Entrepreneurship

Finance

Information Systems

Management

Marketing

Marketing and Information Systems

Risk Management and Insurance

Joint Emphasis in Accounting and Finance

Joint Emphasis in Accounting and Information Systems

Business Administration, Minor

Business Administration (MBA)

Accounting

Business Economics

Business Analytics

Entrepreneurship

Finance

Information Systems

International Business

Management

Decision Sciences

Marketing

Risk Management and Insurance

Economics, Bachelor of Arts

Economics, Minor

Economics, Master of Arts

Entrepreneurship, Minor

Information Systems, Minor

Information Systems, Master of Science

Decision Sciences

Business Analytics

Information Technology, Master of Science

International Business, Bachelor of Arts

Chinese

French

German

Japanese

Portuguese

Spanish

Taxation, Master of Science



# Degree Programs

California State University Fullerton offers more than 100 undergraduate and graduate degrees in a wide variety of academic fields. Many of these disciplines also provide opportunities for concentrations and special emphasis areas within a given degree. Please see the applicable academic department or program descriptions beginning on the pages indicated below:

## Bachelor's Degrees: (55)

American Studies – B.A. ....	158
Anthropology – B.A. ....	163
Art – B.A. and B.F.A. ....	171, 173
Athletic Training – B.S. ....	400
Biochemistry – B.S. ....	214
Biological Science – B.S. ....	194
Business Administration – B.A. ....	208
Chemistry – B.A. and B.S. ....	215, 214
Child and Adolescent Development – B.S. ....	227
Civil Engineering – B.S. ....	234
Communication Studies – B.A. ....	369
Communications – B.A. ....	241
Communicative Disorders – B.A. ....	369
Comparative Literature – B.A. ....	311
Computer Engineering – B.S. ....	258
Computer Science – B.S. ....	262
Criminal Justice – B.A. ....	274
Dance – B.A. ....	587
Earth Science – B.A. ....	339
Economics – B.A. ....	278
Electrical Engineering – B.S. ....	293
English – B.A. ....	311
Ethnic Studies – B.A. with options in	
African American Studies ....	153
Asian-American Studies ....	187
Chicano Studies ....	223
European Studies – B.A. ....	325
French – B.A. ....	454
Geography – B.A. ....	333
Geology – B.S. ....	339
Health Science – B.S. ....	350
History – B.A. ....	358
Human Services – B.S. ....	380
International Business – B.A. ....	397
Japanese – B.A. ....	455
Kinesiology – B.S. ....	402
Latin American Studies – B.A. ....	413
Liberal Studies – B.A. ....	416
Linguistics – B.A. ....	420
Mathematics – B.A. ....	432
Mechanical Engineering – B.S. ....	442
Music – B.A. and B.M. ....	475, 478
Nursing – B.S. ....	493
Philosophy – B.A. ....	509
Physics – B.S. ....	515
Political Science – B.A. ....	520
Psychology – B.A. ....	529
Public Administration – B.A. ....	538
Radio-TV-Film – B.A. ....	541
Religious Studies – B.A. ....	252
Sociology – B.A. ....	567
Spanish – B.A. ....	455
Theatre Arts – B.A. and B.F.A. ....	584, 585
Women Studies – B.A. ....	596

## Master's Degrees: (50)

Accountancy – M.S. ....	147
American Studies – M.A. ....	158
Anthropology – M.A. ....	163
Art – M.A. and M.F.A. ....	175, 176
Biology – M.S. ....	198
Biotechnology – M.Bt. ....	197
Business Administration – MBA ....	211
Chemistry – M.A. and M.S. ....	216
Civil Engineering – M.S. ....	235
Communication Studies M.A. ....	370
Communications – M.A. ....	243
Communicative Disorders – M.A. ....	370
Computer Science – M.S. ....	263
Counseling – M.S. ....	270
Economics – M.A. ....	278
Education – M.S. with Concentrations in	
Bilingual/Bicultural Education ....	303
Educational Technology ....	303
Elementary Curriculum and Instruction ....	304
Reading ....	546
Educational Administration ....	285
Higher Education ....	286
Secondary Education ....	556
Special Education ....	577
T.E.S.O.L. ....	458
Electrical Engineering – M.S. ....	295
English – M.A. ....	312
Environmental Engineering – M.S. (online only) ....	319
Environmental Studies – M.S. ....	322
Geography – M.A. ....	334
Geology – M.S. ....	340
Gerontology – M.S. ....	346
History – M.A. ....	359
Information Systems – M.S. ....	385
Information Technology – M.S. (online only) ....	387
Instructional Design and Technology – M.S. (online only) ....	393
Kinesiology – M.S. ....	404
Linguistics – M.A. ....	420
Mathematics – M.A. ....	432
Mechanical Engineering – M.S. ....	444
Music – M.A. and M.M. ....	480
Nursing – M.S. ....	494
Physics – M.S. ....	516
Political Science – M.A. ....	521
Psychology – M.A. ....	530
Psychology (Clinical) – M.S. ....	531
Public Administration – M.P.A. ....	538
Public Health – M.P.H. ....	352
Science (Teaching) – M.A.T. ....	551
Screenwriting – M.F.A. ....	541
Social Work – M.S.W. ....	562
Sociology – M.A. ....	568
Software Engineering – M.S. (online only) ....	574
Spanish – M.A. ....	457
Taxation – M.S. ....	148
Theatre Arts – M.F.A. ....	587

## Doctoral Degree: (2)

Educational Leadership – Ed.D. ....	287
Nursing Practice – D.N.P. ....	498